



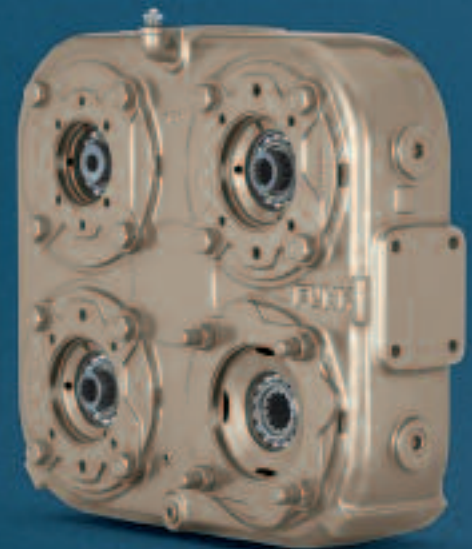
JOHN DEERE

Modular Pump Drives

Funk™ Drivetrain Components



***With 5,000 configurations,
the advantages really add up.***



BEYOND THE BOUNDARIES

For the ultimate in design flexibility, choose Funk pump drives



A modular approach to building pump drives

We offer more than 5,000 configurations, gear ratios, hydraulic pump adapters, mounting options, and more.

So go ahead and design the equipment you need.
You can be sure a Funk pump drive will work.

Built for quiet operation, our pump drives are available in five series, ranging from 101 to 708 kW (135 to 950 hp) and equipped to operate from an independent mount, direct-engine mount, or as a clutch-driven unit.

Adapters are available for a variety of engine housings and flywheel sizes.

The many advantages of modular design

With over 50 years of design and manufacturing experience behind us, Funk pump drives are the most dependable products on the market.

The combination of design technology and modular manufacturing enables us to offer you highly durable and reliable pump drives. Our wide selection means you can have the best fit for your application.

Another advantage of our modular design is the fast service we offer our customers. Whether you need a new pump drive, or service support on an existing one, our modular assembly system lets us get you what you need fast.

You will also appreciate our integration support network. Our application engineers can help you select the options that best fit your needs. We also offer dedicated OEM service and long-term aftermarket support through our John Deere Power Systems distribution network – you never have far to go for help.

Add up all the advantages – including our 5,000 configuration options – and it is easy to see why Funk pump drives are number one.



Pump drive specifications



Series	Max input power*	Max input torque*	Max output torque per pump pad	Max input or output speed	Output rotation
61000 Double	101 kW (135 hp)	481 Nm (355 lb-ft)	305 Nm (225 lb-ft)	3000 rpm	Anti-enginewise
61000 Triple	101 kW (135 hp)	481 Nm (355 lb-ft)	305 Nm (225 lb-ft)	3000 rpm	Anti-enginewise
28000 Single Direct drive	268 kW (360 hp)	881 Nm (650 lb-ft)	881 Nm (650 lb-ft)	3000 rpm	Enginewise
28000 Single w/ 5" gear centers	242 kW (325 hp)	780 Nm (575 lb-ft)	780 Nm (575 lb-ft)	3000 rpm	Anti-enginewise
28000 Double w/ 5" gear centers	268 kW (360 hp)	881 Nm (650 lb-ft)	780 Nm (575 lb-ft)	3000 rpm	Anti-enginewise
28000 Double w/ 6" gear centers	268 kW (360 hp)	1017 Nm (750 lb-ft)	881 Nm (650 lb-ft)	3000 rpm	Anti-enginewise
28000 Triple	268 kW (360 hp)	1017 Nm (750 lb-ft)	881 Nm (650 lb-ft)	3000 rpm	Anti-enginewise
59000 Double	522 kW (700 hp)	1695 Nm (1250 lb-ft)	881 Nm (650 lb-ft)	3000 rpm	Anti-enginewise
59000 Triple	522 kW (700 hp)	1695 Nm (1250 lb-ft)	881 Nm (650 lb-ft)	3000 rpm	Anti-enginewise
59000 Four	522 kW (700 hp)	1695 Nm (1250 lb-ft)	881 Nm (650 lb-ft)	3000 rpm	Anti-enginewise
59000 Four Wide	522 kW (700 hp)	1695 Nm (1250 lb-ft)	881 Nm (650 lb-ft)	3000 rpm	Anti-enginewise
56000 Double	708 kW (950 hp)	2712 Nm (2000 lb-ft)	2712 Nm (2000 lb-ft)	2500 rpm	Anti-enginewise
56000 Double w/ shaft drive	708 kW (950 hp)	2712 Nm (2000 lb-ft)	2712 Nm (2000 lb-ft)	2500 rpm	Anti-enginewise; except through shaft-drive enginewise
56000 Triple	708 kW (950 hp)	2712 Nm (2000 lb-ft)	2712 Nm (2000 lb-ft)	2500 rpm	Anti-enginewise
56000 Four	708 kW (950 hp)	2712 Nm (2000 lb-ft)	2712 Nm (2000 lb-ft)	2500 rpm	Anti-enginewise; except through shaft-drive enginewise
56000 Five	708 kW (950 hp)	2712 Nm (2000 lb-ft)	2034 Nm (1500 lb-ft)	2500 rpm	Enginewise
56000 Five Deep sump	708 kW (950 hp)	2712 Nm (2000 lb-ft)	2034 Nm (1500 lb-ft)	2500 rpm	Enginewise
57000 Four 14" centers	708 kW (950 hp)	2712 Nm (2000 lb-ft)	2712 Nm (2000 lb-ft)	2500 rpm	Anti-enginewise
57000 Four 16" centers	708 kW (950 hp)	2712 Nm (2000 lb-ft)	2712 Nm (2000 lb-ft)	2500 rpm	Anti-enginewise

*Clutch-rating dependent. All specifications are subject to change.



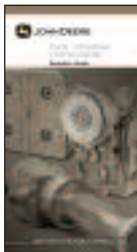
For additional information, contact:

John Deere Power Systems
3801 West Ridgeway Avenue
P.O. Box 5100
Waterloo, IA 50704-5100
Phone: +1 800 533 6446 (U.S.)
Phone: +1 319 292 6060 (Canada)
Fax: +1 319 292 5075
E-mail: jdpower@JohnDeere.com

John Deere Power Systems
Doornlei, 24
2018 Antwerpen
Belgium
Phone: +32 3 238 89 69
Fax: +32 3 248 54 98

Want more information?

For additional information on Funk drivetrain components, please request our brochures.



Proven off-highway performance

Your equipment deserves nothing less

Staying true to the John Deere commitment, Funk drivetrain components incorporate over 150 years of off-highway vehicle experience.

Our continued promise is to provide you with an array of robust designs to meet your demanding OEM needs. When you choose a Funk pump drive, you know you are getting the best combination of performance, reliability, and durability.

Our application engineers are ready to assist you in selecting the options that best fit your needs. We also offer dedicated OEM service and long-term aftermarket support.

To see the value we can add to your equipment, call us today at 1-800-533-6446.

The power of a worldwide support network

With John Deere, you never have far to go to find expert assistance and advice. The more than 4,000 service locations throughout the world give you peace of mind that you can get service when and where you need it.

