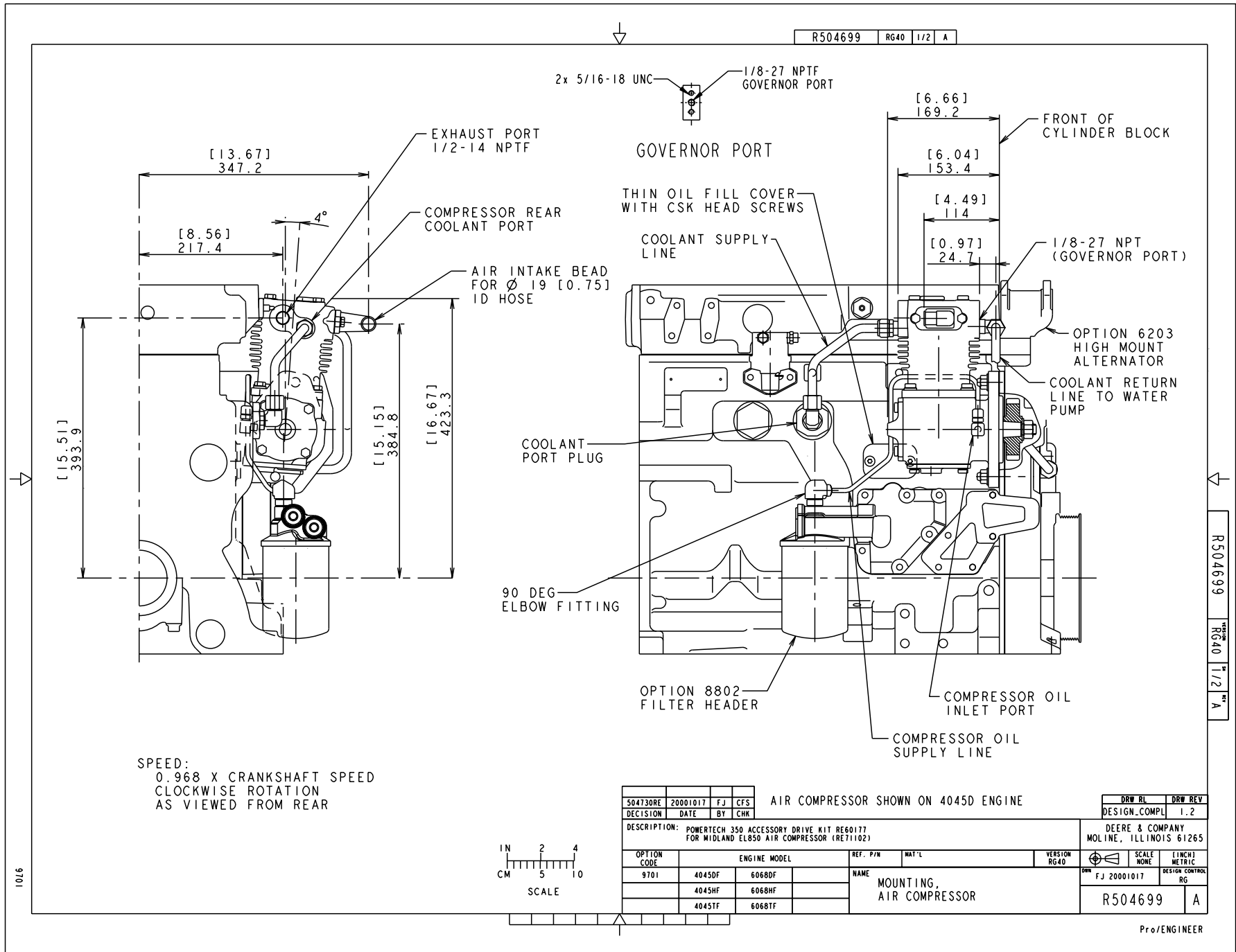


Air Compressors

<u>Engine Model / Compressor Description</u>	<u>Factory Codes</u>	<u>Air Compressor Part Number</u>	<u>Air Compressor Installation Kit No.</u>	<u>Installation Kit Drawing No.</u>	<u>Page</u>
PowerTech 4045 and 6068 Engines					
Midland 850 without Drive-thru Capability	5204	RE71102	RE60177	R504699	2-3
Midland 1300 with Drive-thru Capability	5206	RE516219	RE503942	R502197	4
Midland 1300 without Drive-thru Capability	5206	RE71133	RE503942	R502197	4
Bendix 550 (SA-5001085)	5205	RE66033	RE500909	R500721	5
PowerTech 6081 Engines					
Midland Air Governor		RE70072		RE505125	6
Midland 1300 with Drive-thru Capability	5201/7802	RE66568	RE67122 ¹	RE62417	7-8
Holset 13 cfm with Drive-thru Capability	5201/7804	RE65919	RE70694	RE70693	9-10
Holset 13 cfm with Drive-thru Capability (Continuous Duty)	5201/7805	RE500660	RE70694	RE70693	9-10
PowerTech 6105 and all 6125 Engines					
Holset 13.2 cfm w/Drive-thru Capability (Gear Drive)	5201/7801	RE65093	RE518293 ²	RE500781 (1 of 3)	11
Holset 15 cfm w/Drive-thru Capability (Gear Drive)	5201/7802	RE69650	RE518293 ²	RE500781 (1 of 3)	11
Holset 34 cfm w/Drive-thru Capability (Gear Drive)	5201/7803	RE500297	RE518293 ²	RE500781 (2 of 3)	12
Holset 13.2 cfm w/Drive-thru Cap. (Spline Drive)	5202 or 5203	RE501186	RE518293	RE500781 (3 of 3)	13
Holset 15 cfm w/Drive-thru Cap. (Spline Drive)	5202 or 5203	RE501187	RE518293	RE500781 (3 of 3)	13

¹ - Includes RE64609 Exhaust Manifold Discharge Kit.

² - Also requires RE69480 Idler Gear Assembly.



R504699 RG40 1/2 A

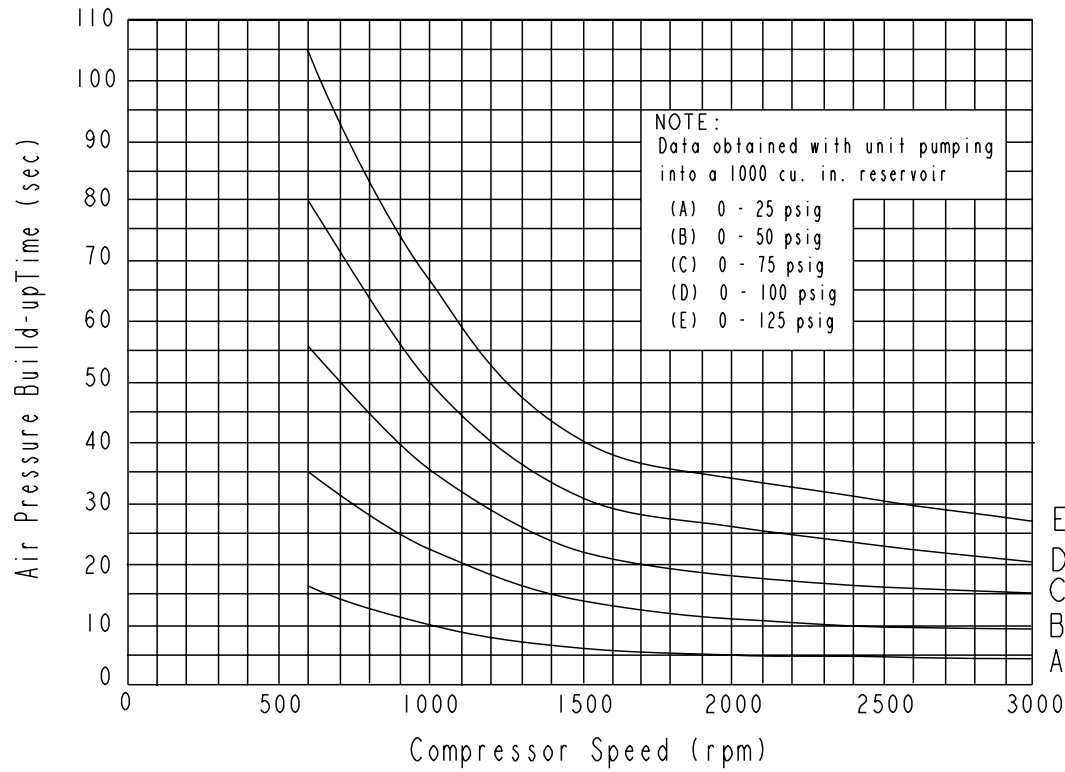
R504699
 1/2" A

504730RE	20001017	FJ	CFS	AIR COMPRESSOR SHOWN ON 4045D ENGINE				DRW_RL	DRW_REV
DECISION	DATE	BY	CHK					DESIGN_COMPL	1.2
DESCRIPTION: POWERTECH 350 ACCESSORY DRIVE KIT RE60177 FOR MIDLAND EL850 AIR COMPRESSOR (RE71102)								DEERE & COMPANY MOLINE, ILLINOIS 61265	
OPTION CODE	ENGINE MODEL	REF. P/N	MAT'L	VERSION	SCALE	INCH	DESIGN CONTROL		
9701	4045DF 6068DF			RG40	NONE	METRIC	FJ 20001017		
	4045HF 6068HF	NAME				RG			
	4045TF 6068TF	MOUNTING, AIR COMPRESSOR					R504699	A	

Pro/ENGINEER

R504699 RG40 2/2 A

PERFORMANCE CURVE
 AIR PRESSURE BUILD-UP TIME vs. COMPRESSOR SPEED
 Typical EL-850 Air Compressor



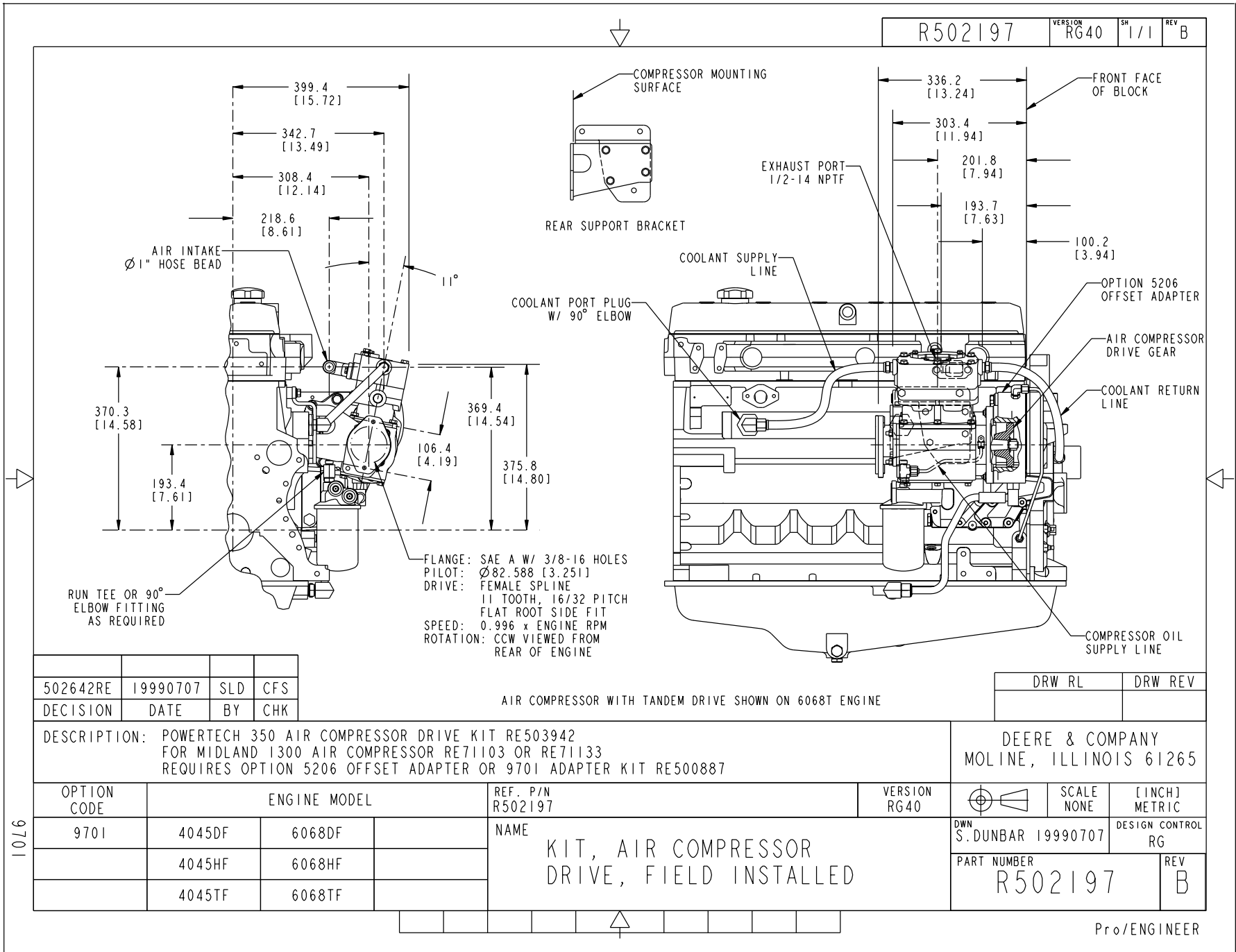
R504699
 RG40
 2/2
 A

Data supplied by Midland Brake, Inc.
 Product Development Lab.

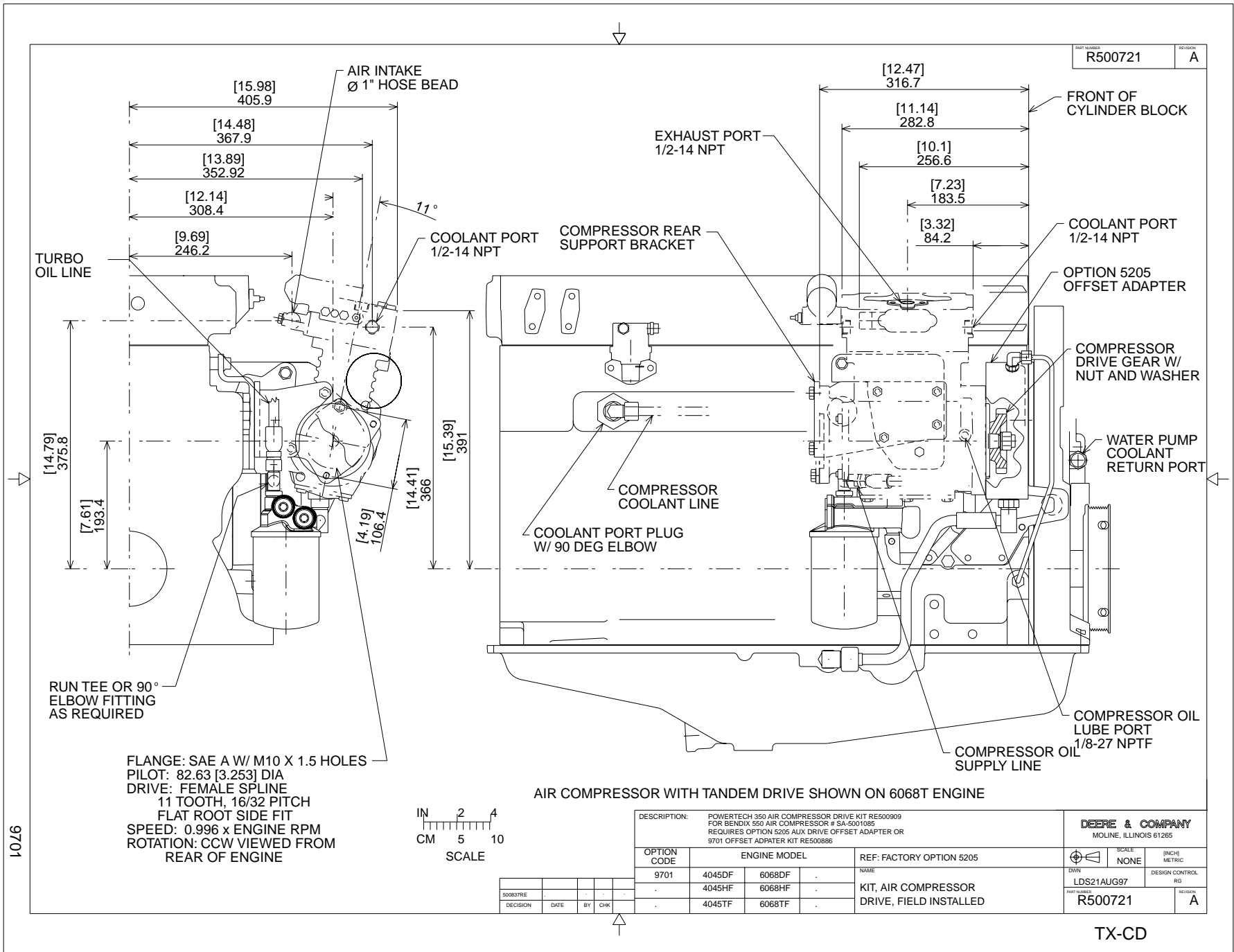
504730RE	20001017	FJ	CFS							DRW RL	DRW REV
DESIGN	DATE	BY	CHK							DESIGN_COMPL	1.2
DESCRIPTION: POWERTECH 350 ACCESSORY DRIVE KIT RE60177 FOR MIDLAND EL850 AIR COMPRESSOR (RE71102)										DEERE & COMPANY MOLINE, ILLINOIS 61265	
OPTION CODE	ENGINE MODEL			REF. P/N	MAT'L	VERSION	SCALE	INCH/METRIC	DESIGN CONTROL		
9701	4045DF	6068DF				RG40	1:1	INCH	RG		
	4045HF	6068HF		NAME							
	4045TF	6068TF		MOUNTING, AIR COMPRESSOR						R504699	A

Pro/ENGINEER

9701



9701



PART NUMBER: R500721 SECTION: A

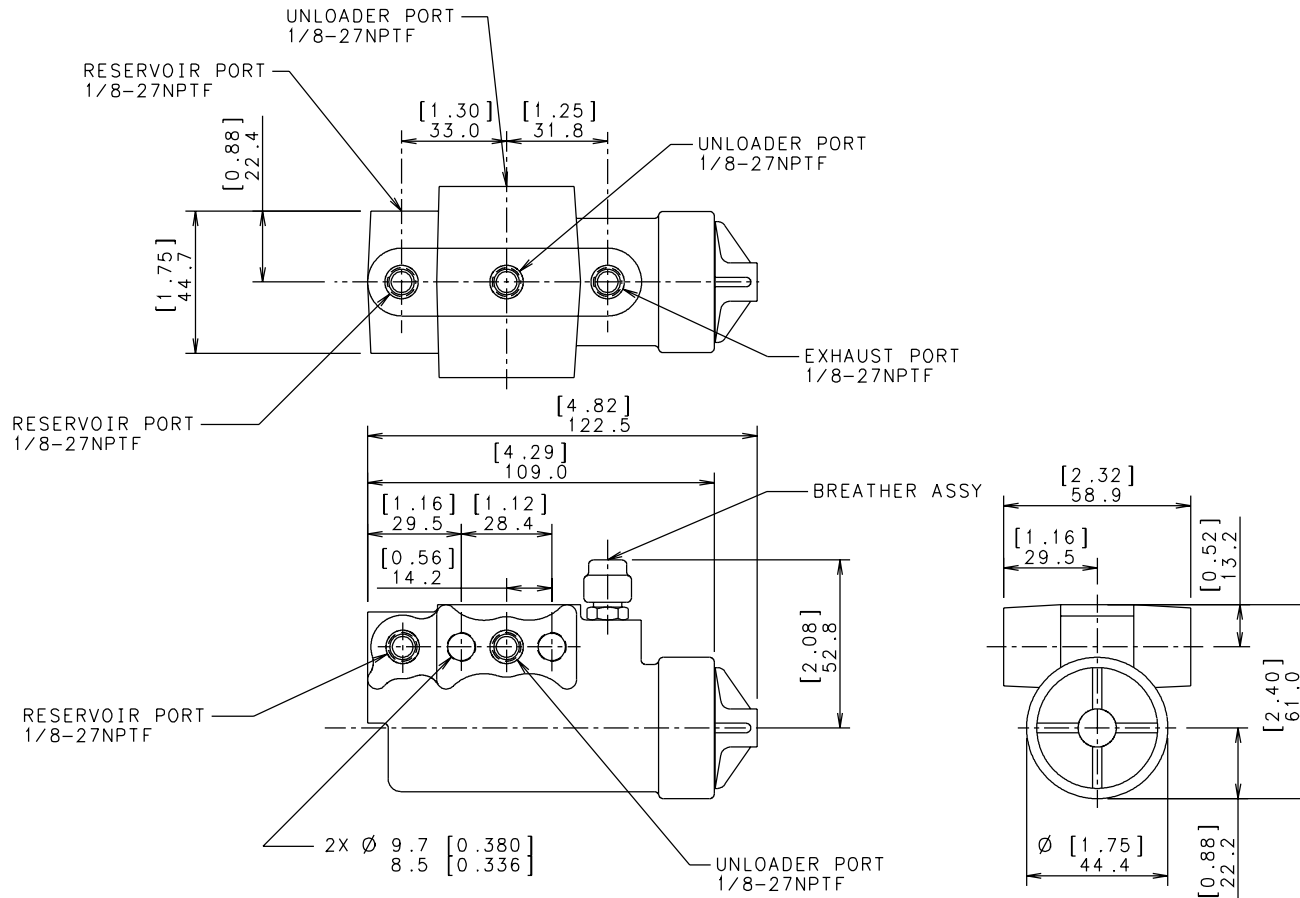
AIR COMPRESSOR WITH TANDEM DRIVE SHOWN ON 6068T ENGINE

DESCRIPTION: POWERTECH 350 AIR COMPRESSOR DRIVE KIT RE500909 FOR BENDIX 550 AIR COMPRESSOR # SA-5001085 REQUIRES OPTION 5205 AUX DRIVE OFFSET ADAPTER OR 9701 OFFSET ADAPTER KIT RE500886			DEERE & COMPANY MOLINE, ILLINOIS 61265	
OPTION CODE	ENGINE MODEL	REF: FACTORY OPTION 5205	SCALE	NONE
9701	4045DF 6068DF	NAME	INCH	METRIC
	4045HF 6068HF	KIT, AIR COMPRESSOR DRIVE, FIELD INSTALLED	LDS21AUG97	DESIGN CONTROL
	4045TF 6068TF		R500721	SECTION: A

50083PRE				
DECISION	DATE	BY	CHK	

TX-CD

PART NUMBER RE505125 | REV A
SHEET 1 OF 1



CUT IN PRESSURE (PSI) = 105 +5/-0
CUT OUT PRESSURE (PSI) = 22.5 ± 7.5 ABOVE CUT IN PRESSURE

KIT #RE70072
REMOTE MOUNT

				TERMINOLOGY CODE	RG40
503186RE	19990726	WRH		DESIGN CONTROL	VERSION NO
DECISION	DATE	BY	CHK	RG	

DESCRIPTION:

NAME
KIT 6081 2CYL.
AIR GOVERNOR

DEERE & COMPANY
MOLINE, ILLINOIS 61265

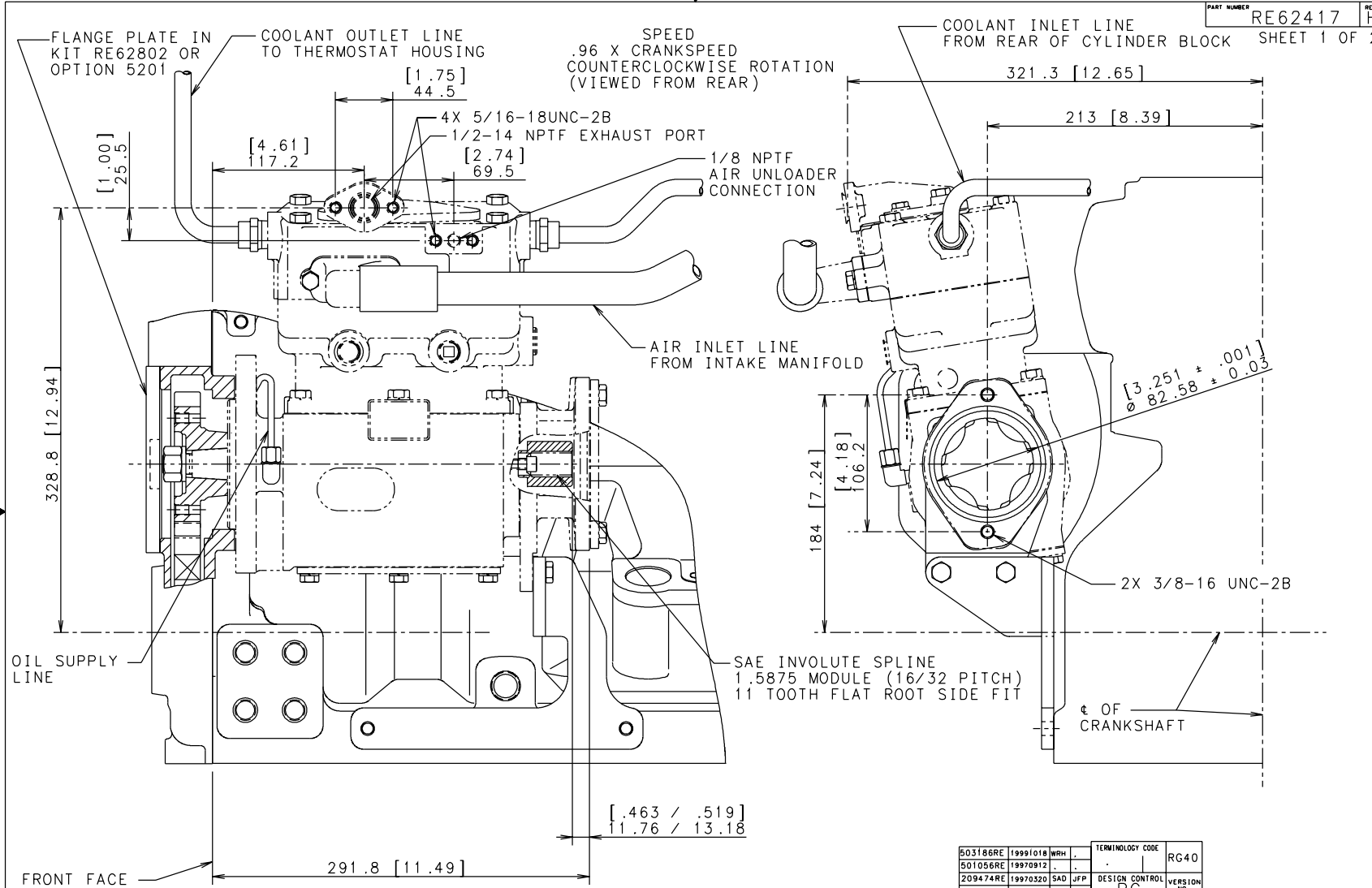
SCALE 1:1 [INCH] METRIC

DWN WRH 19990719 DESIGN CONTROL RG

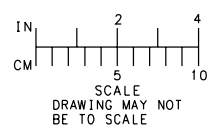
PART NUMBER RE505125 | REV A

SHEET 1 OF 1

PART NUMBER **RE62417** REV **H**
SHEET 1 OF 2



KIT #RE67122
MUST SELECT: 5201 AUX DRIVE
USED IN CONJUNCTION WITH RE62802
KIT,AUX DRIVE LH (BASE)
AIR OUTPUT RATING OF 13 cfm



503186RE	19991018	WRH	TERMINOLOGY CODE	RG40
501056RE	19970912		DESIGN CONTROL	VERSION
209474RE	19970320	SAD JFP	RG	
DECISION	DATE	BY	CHK	NO

DESCRIPTION:KIT FOR USE WITH MIDLAND WITH "PIGGYBACK" PUMP DRIVE CAPABILITY PART NUMBER RE70987 AND RE64609 EXHAUST MANIFOLD DISCHARGE KIT

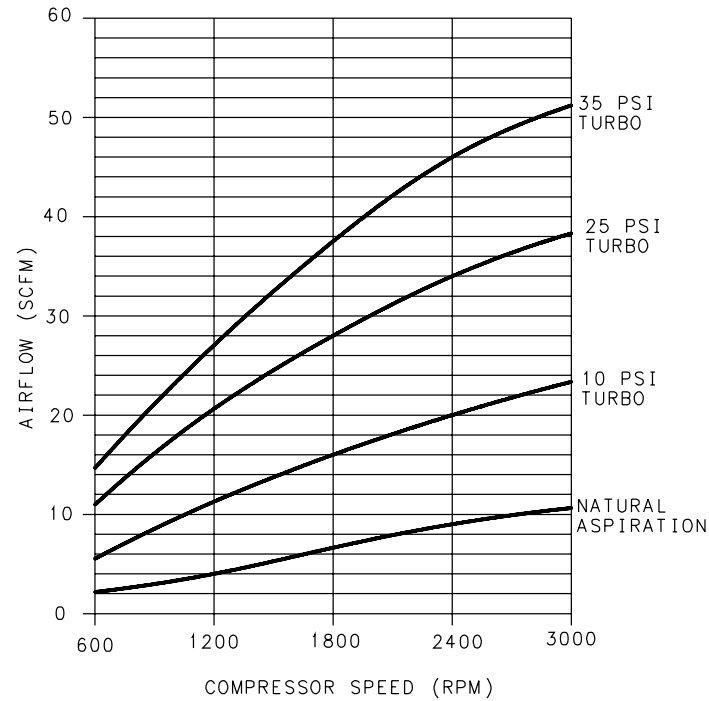
NAME
KIT 6081 2CYL.
AIR COMPRESSOR

DEERE & COMPANY
MOLINE, ILLINOIS 61265

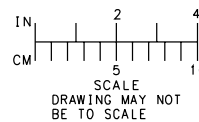
DWN	WRH	19991018	DESIGN CONTROL	RG
H/503186RE				
PART NUMBER	SCALE	[INCH] METRIC	DESIGN CONTROL	REV
RE62417	1:2		RG	H

SHEET 1 OF 2

PART NUMBER RE62417 REV H
SHEET 2 OF 2



KIT #RE67122
MUST SELECT: 5201 AUX DRIVE
USED IN CONJUNCTION WITH RE62802
KIT, AUX DRIVE LH (BASE)
AIR OUTPUT RATING OF 13 cfm



503186RE	19991018	WRH	.	TERMINOLOGY CODE	RG40
501056RE	19970912	.	.	DESIGN CONTROL	VERSION NO
209474RE	19970320	SAD	JFP	RG	
DECISION	DATE	BY	CHK		

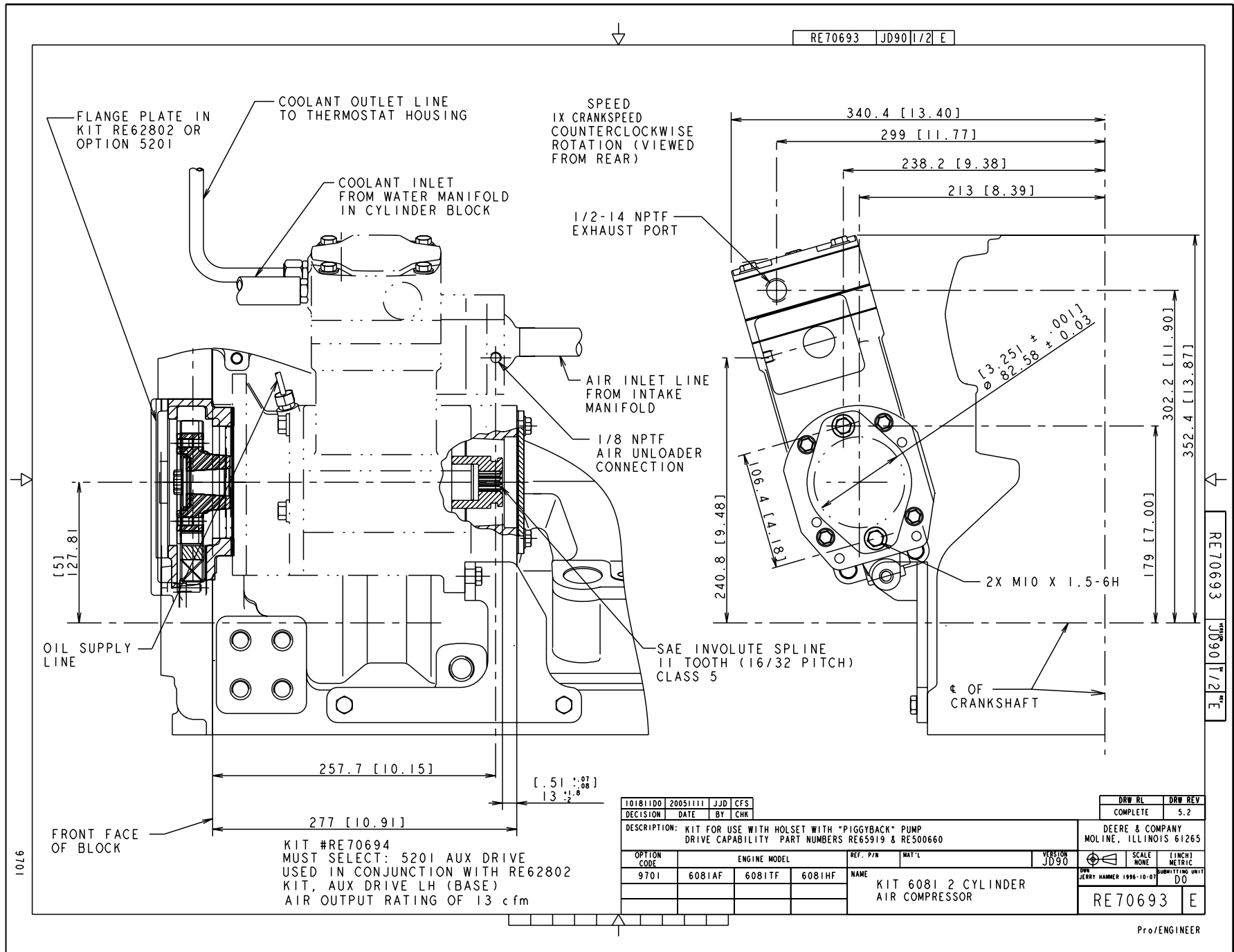
DESCRIPTION: KIT FOR USE WITH MIDLAND WITH "PIGGYBACK" PUMP DRIVE CAPABILITY PART NUMBER RE70987 AND RE64609 EXHAUST MANIFOLD DISCHARGE KIT

DEERE & COMPANY
MOLINE, ILLINOIS 61265

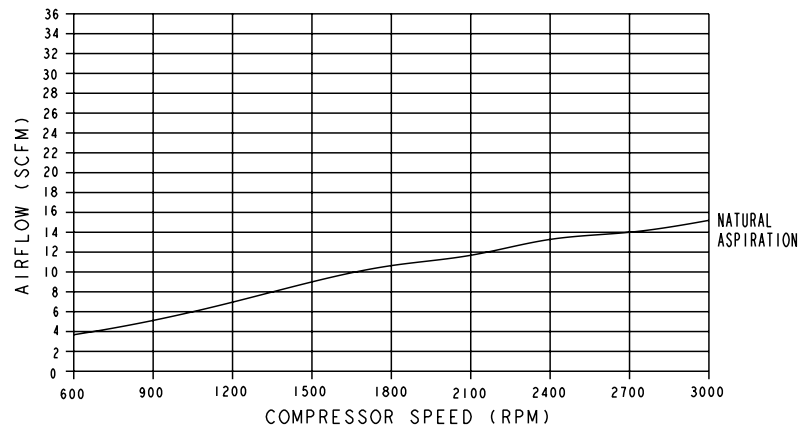
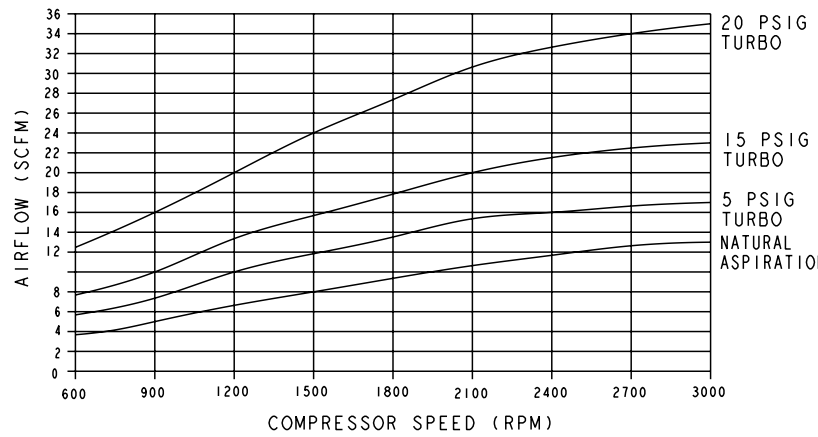
NAME
KIT 6081 2CYL.
AIR COMPRESSOR

DWN	WRH	19991018	DESIGN CONTROL
	H/	503186RE	RG
PART NUMBER	REV		
RE62417	H		

SHEET 2 OF 2



RE70693 JD90 2/2 E



HEAVY DUTY CONTINUS OPERATING MODEL 7805

KIT #RE70694
 MUST SELECT: 5201 AUX DRIVE
 USED IN CONJUNCTION WITH RE62802
 KIT, AUX DRIVE LH (BASE)
 AIR OUTPUT RATING OF 13 cfm

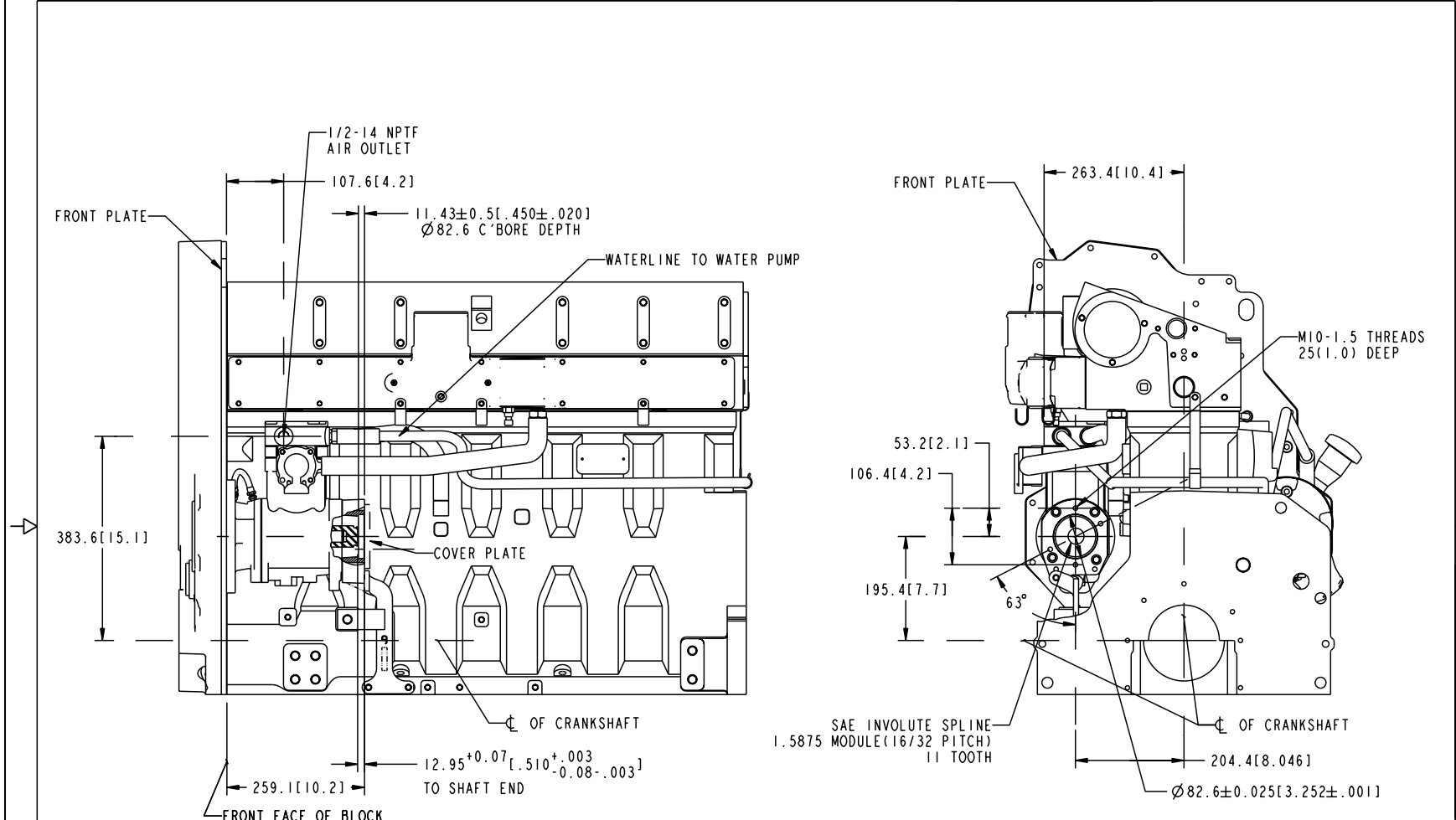
RE70693 JD90 2/2 E

9701

101811DD	20051111	JJD	CFS	DRW RL	DRW REV
DECISION	DATE	BY	CHK	COMPLETE	5.2
DESCRIPTION: KIT FOR USE WITH HOLSET WITH "PIGGYBACK" PUMP DRIVE CAPABILITY PART NUMBERS RE65919 & RE500660				DEERE & COMPANY MOLINE, ILLINOIS 61265	
OPTION CODE	ENGINE MODEL			REF. P/N	MAT'L
9701	6081AF	6081TF	6081HF	JD90	
	NAME			SCALE	(INCH) METRIC
	KIT 6081 2 CYLINDER AIR COMPRESSOR			NONE	
				DRW JERRY HAMMER 1996-10-01	SUBMITTING UNIT
				DO	
				RE70693	E

Pro/ENGINEER

RE500781 RG40 I/3 G



RE500781 RG40 I/3 G

KIT #RE518293
 MUST SELECT: 5201 AUX.
 DRIVE W/ IDLER GEAR &
 RG30241 BRACKET, AIR COMP. SUPPORT

HOLSET 13.2 OR 15 CFM AIR COMPRESSOR SHOWN
 NOT INCLUDED IN INSTALLATION KIT-ORDER SEPARATELY
 SEE 7800 OPTION CODE DRAWING FOR AIR COMPRESSOR PERFORMANCE CURVES

PARTS IN KIT NOT NEEDED FOR THIS APPLICATION
 ARE (2) R42312 FITTINGS, (1) R53811 HOSE,
 (1) R130625 HOSE, (1) T27077 FITTINGS,
 (1) R516121 COOLANT TUBE,
 (1) R39503 FITTING, (1) R108661 HOSE,
 (1) M45937 FITTING, (2) 42M7071 STUD AND (2) 14M7299 NUT.

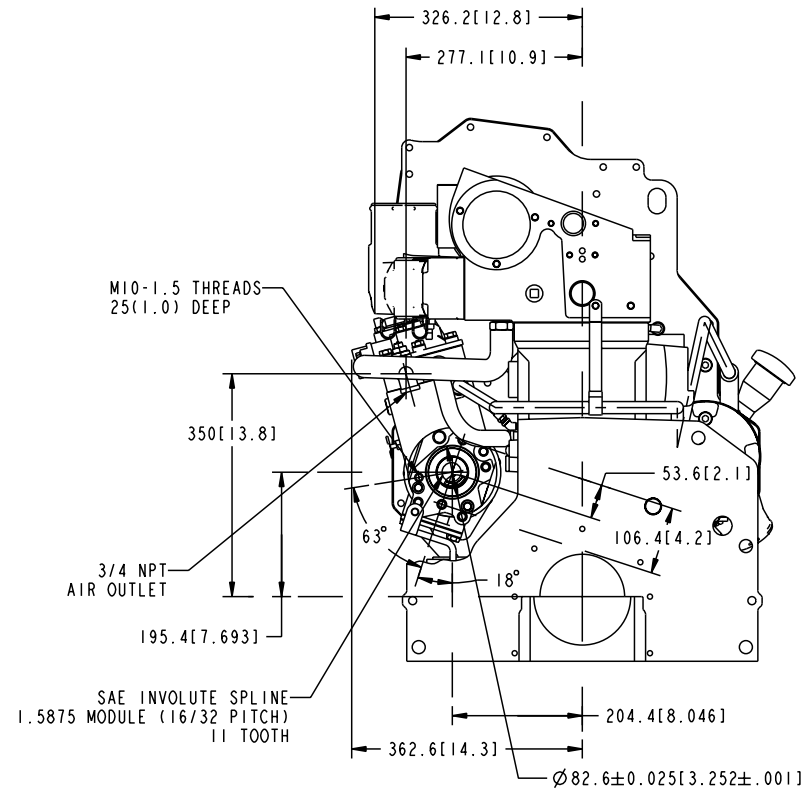
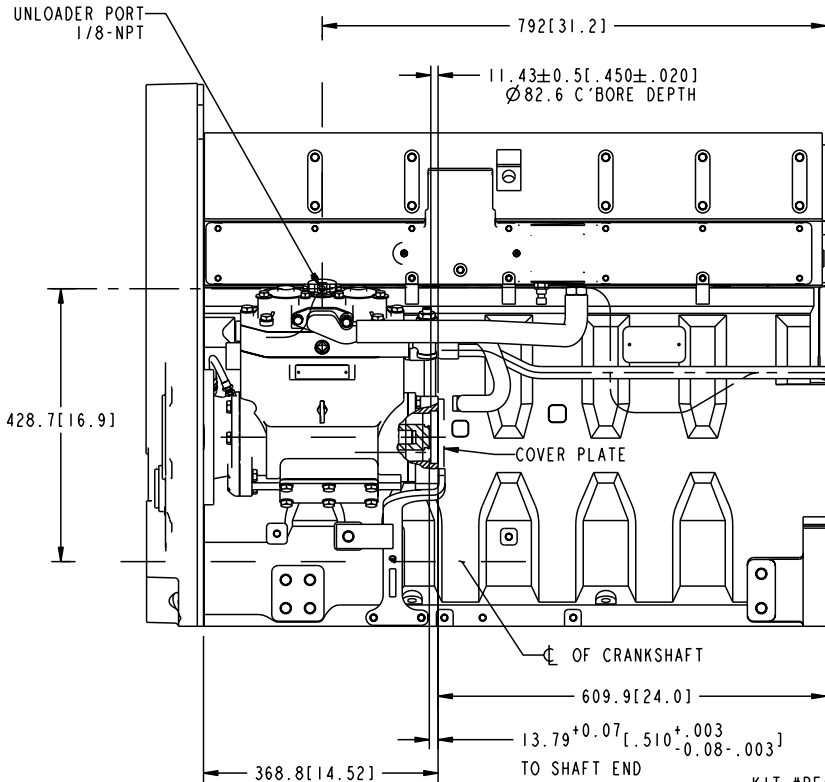


505789RE	20020315	JGS	JGS	DECISION	DATE	BY	CHK	DRW	BL	DRW	REV
DESCRIPTION: POWERTECH 12.5L KIT FOR HOLSET 13.2, 15, 34 CFM AIR COMPRESSOR								DEERE & COMPANY MOLINE, ILLINOIS 61265			
OPTION CODE	ENGINE MODEL	REF. P/N	MAT'L	VERSION	SCALE	[INCH] METRIC	DESIGN CONTROL	RE500781 G			
		NAME		RG40	NONE		RG				
		KIT, AIR COMPRESSOR									
		13.2 & 15 CFM HOLSET									

SHEET 1 of 3

Pro/ENGINEER

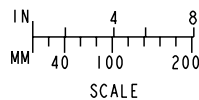
RE500781 RG40 2/3 G



KIT #RE518293
 MUST SELECT: 5201 AUX.
 DRIVE W/ IDLER GEAR &
 RG30243 BRACKET, AIR COMP. SUPPORT

HOLSET 34 CFM AIR COMPRESSOR SHOWN
 NOT INCLUDED IN INSTALLATION KIT-ORDER SEPARATELY
 SEE 7800 OPTION CODE DRAWING FOR AIR COMPRESSOR PERFORMANCE CURVES

PARTS IN KIT NOT NEEDED FOR THIS APPLICATION
 ARE (2) R75562 FITTINGS, (2) R26375 O'RING,
 (1) R113490 HOSE, (1) R129607 HOSE,
 (1) R59873 FITTING, (1) R515142 COOLANT TUBE,
 (1) R39503 FITTING, (1) R108661 HOSE, (1) M45937 FITTING,
 (2) 42M7071 STUD AND (2) 14M7299 NUT.



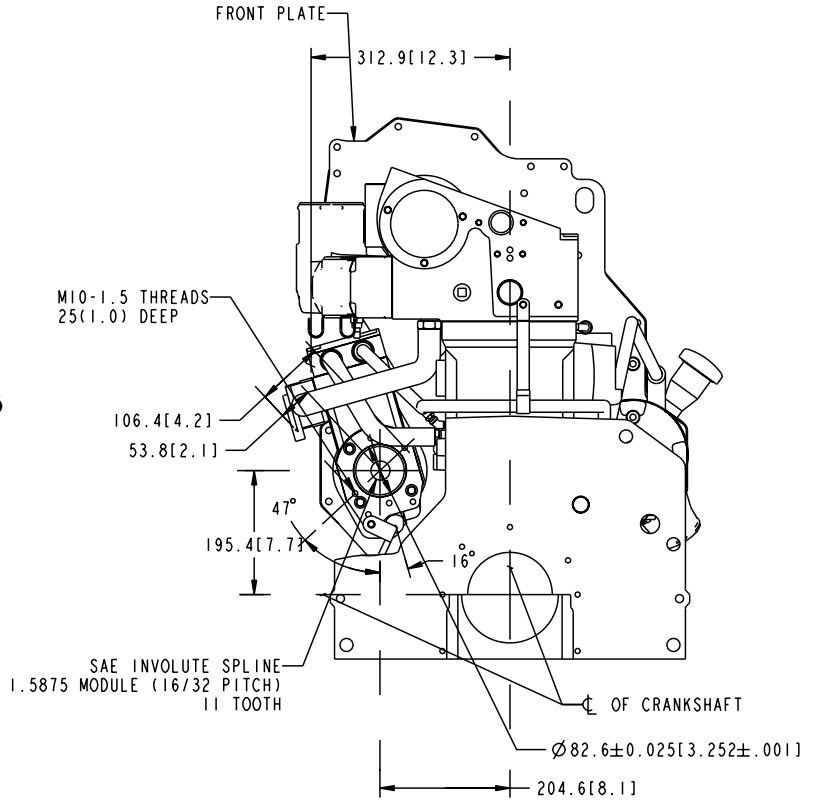
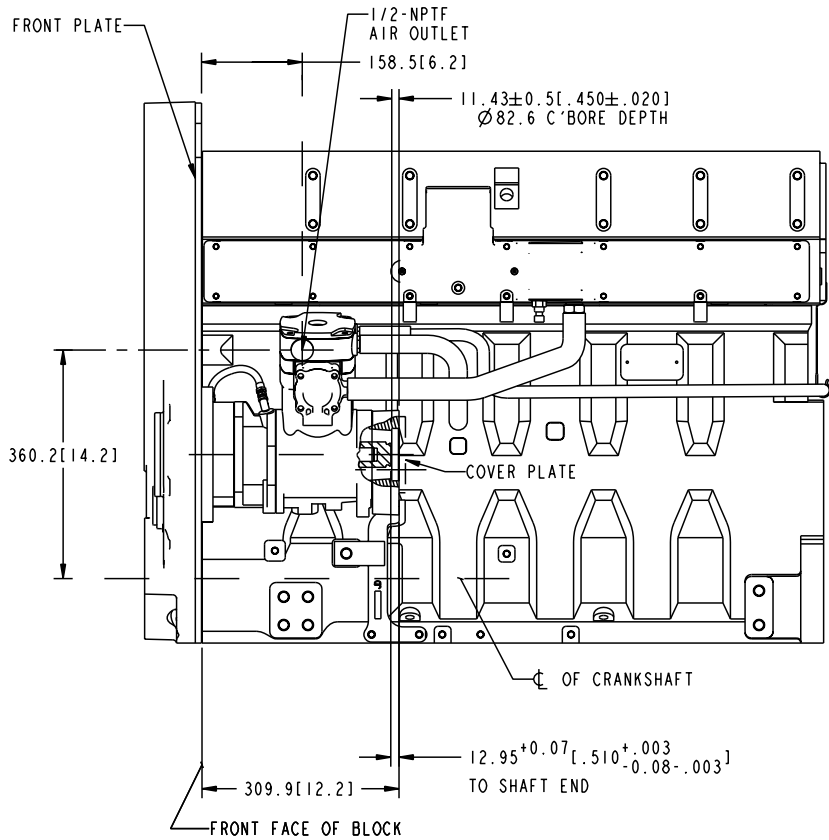
DRAWING MAY NOT BE TO SCALE

505789RE	20020315	JGS	JGS	DECISION	DATE	BY	CHK	DRW RL	DRW REV
DESCRIPTION: POWERTECH 12.5L, KIT FOR HOLSET 13.2, 15, 34 CFM AIR COMPRESSOR								DEERE & COMPANY MOLINE, ILLINOIS 61265	
OPTION CODE	ENGINE MODEL	REF. P/W	MAT'L	REVISION	SCALE	UNIT	CONTROL	SCALE NONE	UNIT INCH/METRIC
				RG40				JGS 20020315	RG
NAME: KIT, AIR COMPRESSOR 34 CFM HOLSET								RE500781 G	

SHEET 2 of 3

Pro/ENGINEER

RE500781 RG40 3/3 G



KIT #RE518293
 MUST SELECT: 5202 OR 5203 OR 5204 AUX.
 DRIVE W/ IDLER GEAR &
 RG30266 BRACKET, AIR COMP. SUPPORT

HOLSET 13.2 OR 15 CFM SPLINE DRIVE AIR COMPRESSOR SHOWN
 NOT INCLUDED IN INSTALLATION KIT-ORDER SEPARATELY
 SEE 7800 OPTION CODE DRAWING FOR AIR COMPRESSOR PERFORMANCE CURVES

PARTS IN KIT NOT NEEDED FOR THIS APPLICATION
 ARE (2) R42312 FITTINGS, (1) R53811 HOSE,
 (1) R130625 HOSE, (1) T27077 FITTING,
 (1) R516121 COOLANT TUBE,
 (1) R113490 HOSE AND (1) R59873 FITTING.



SCALE
 DRAWING MAY NOT BE TO SCALE

505789RE	20020315	JGS	JGS	DRW	BL	DRW	REV
DECISION	DATE	BY	CHK				
DESCRIPTION: POWERTECH 12.5L, KIT FOR HOLSET 13.2, 15, 34 CFM AIR COMPRESSOR				DEERE & COMPANY MOLINE, ILLINOIS 61265			
OPTION CODE	ENGINE MODEL	REF. P/N	MAT'L	VERSION RG40	SCALE NONE	1 INCH METRIC	DESIGN CONTROL RG
		NAME	KIT, AIR COMPRESSOR, SPLINE DRIVEN, 13.2 & 15 CFM HOLSET		JGS 20020315		
				RE500781		G	