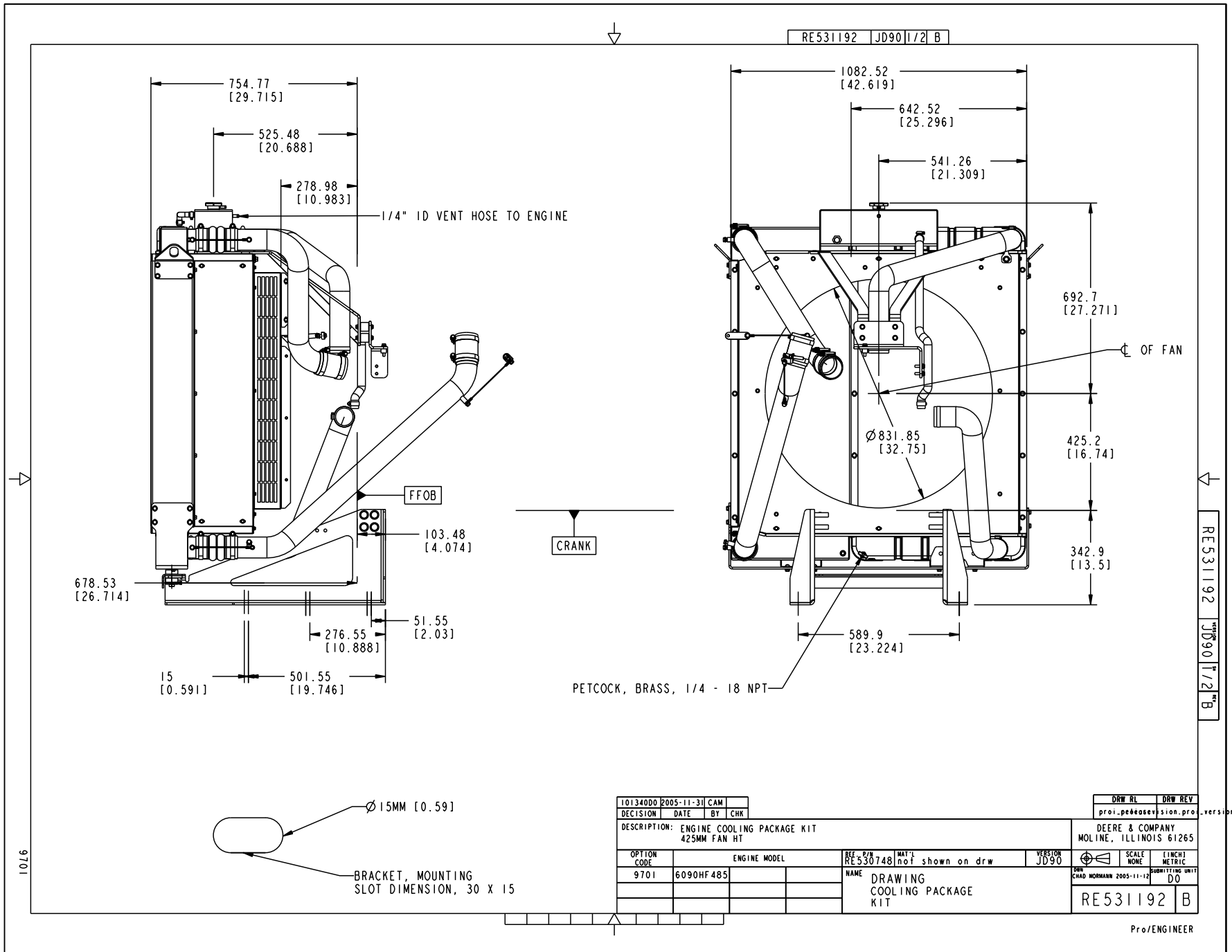


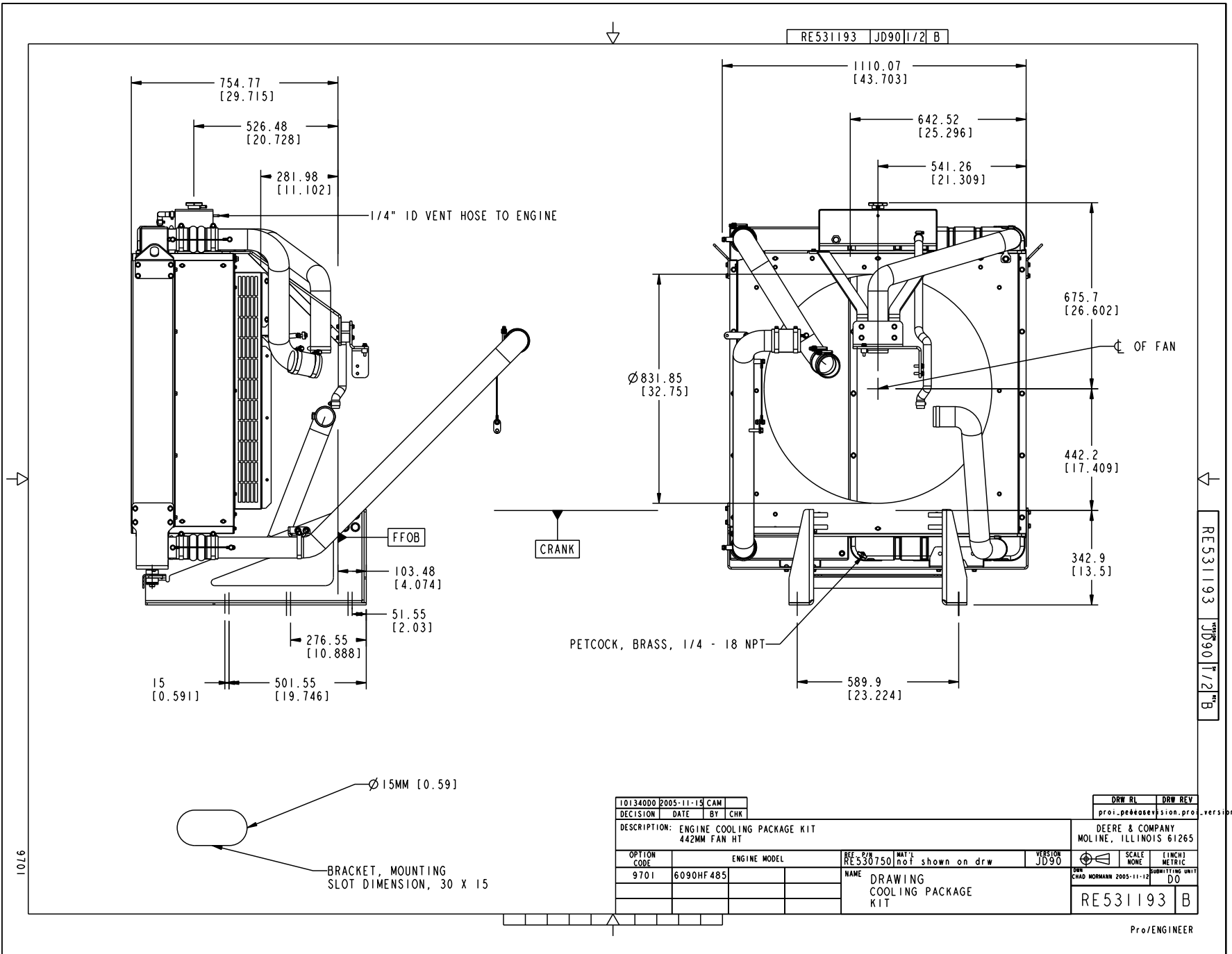
## Installation Drawings - Heat Exchangers and Fans

(Tier 3: PowerTech 9.0 L; 13.5 L)

| <u>Engine Model</u>             | <u>Component(s)</u>                                      | <u>Parts List;<br/>3D Model</u> | <u>Drawing<br/>Number</u> | <u>Page</u> |
|---------------------------------|--|---------------------------------|---------------------------|-------------|
| <b>PowerTech Plus</b> 6090HF485 | Low Power Cooling Package.....                           | RE530749 .....                  | RE531192.....             | 2-3         |
| <b>PowerTech Plus</b> 6090HF485 | High Power Cooling Package.....                          | RE530748 .....                  | RE531192.....             | (same)      |
| <b>PowerTech Plus</b> 6090HF485 | Gen-Set Cooling Package .....                            | RE530750 .....                  | RE531193.....             | 4-5         |
| <b>PowerTech Plus</b> 6090HF485 | High Power Suction Fan Kit (32" Ø) .....                 | RE530892 .....                  | RE531211.....             | 6           |
| <b>PowerTech Plus</b> 6090HF485 | Low Power Suction Fan Kit (32" Ø) .....                  | RE531239 .....                  | RE531212 .....            | 7           |
| <b>PowerTech Plus</b> 6090HF485 | Gen-Set Blower Fan Kit (32" Ø) .....                     | RE530893 .....                  | RE531213 .....            | 8           |
| <b>PowerTech Plus</b> 6090HF485 | Gen-Set Blower Fan Kit (32" Ø; Fan Height = 16.74")..... | RE536006 .....                  | RE536456 .....            | 9           |
| <b>PowerTech Plus</b> 6135HF485 | Low HP Cooling Package.....                              | RE531259 .....                  | RE532207 .....            | 10-12       |
| <b>PowerTech Plus</b> 6135HF485 | High HP Industrial Cooling Package .....                 | RE532365 .....                  | RE532207 .....            | (same)      |
| <b>PowerTech Plus</b> 6135HF485 | High HP Cooling Package.....                             | RE531258 .....                  | RE532207 .....            | (same)      |
| <b>PowerTech Plus</b> 6135HF485 | Suction Fan Kit (38" Ø).....                             | RE532281 .....                  | RE532369 .....            | 13-15       |
| <b>PowerTech Plus</b> 6135HF485 | Suction Fan Kit (38" Ø).....                             | RE530894 .....                  | RE532369 .....            | (same)      |
| <b>PowerTech Plus</b> 6135HF485 | Blower Fan Kit (38" Ø).....                              | RE530895 .....                  | RE532369 .....            | (same)      |







|   |              |          |                  |   |                         |                 |          |
|---|--------------|----------|------------------|---|-------------------------|-----------------|----------|
| 10134000 2005-11-15 CAM                                 |              |          |                  | DRW RL                                    |                         | DRW REV         |          |
| DECISION  | DATE         | BY       | CHK              | pro:pebbe@evision.pro                     |                         |                 |          |
| DESCRIPTION: ENGINE COOLING PACKAGE KIT<br>442MM FAN HT |              |          |                  | DEERE & COMPANY<br>MOLINE, ILLINOIS 61265 |                         |                 |          |
| OPTION CODE   | ENGINE MODEL | REF. P/N | MAT'L            | VERSION                                   | SCALE                   | (INCH)          | (METRIC) |
| 9701  | 6090HF485    | RE530750 | not shown on drw | JD90                                      | NONE                    |                 |          |
|   |              |          |                  | NAME                                      | DATE                    | SUBMITTING UNIT |          |
|   |              |          |                  | DRAWING COOLING PACKAGE KIT               | CHAD NORMANN 2005-11-12 | DO              |          |
|   |              |          |                  | RE531193                                  |                         | B               |          |

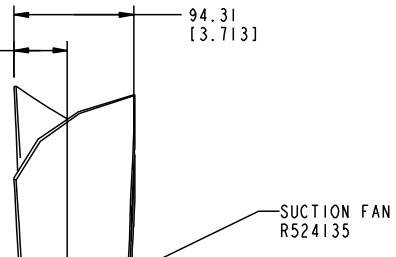
Pro/ENGINEER



RE531211 JD90 1/1 B

42.09  
[1.657]

94.31  
[3.713]



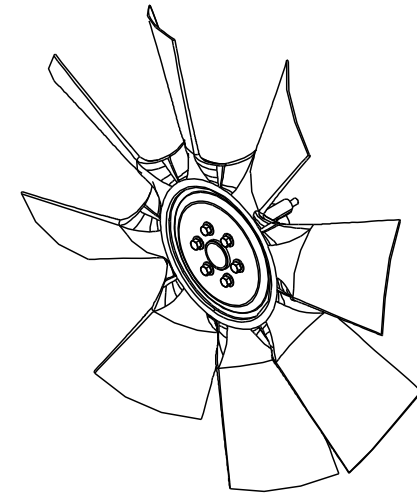
126  
[4.961]

425  
[16.732]

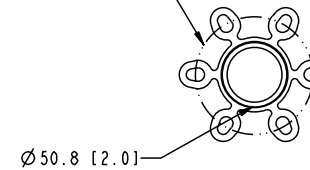
FAN SPACER  
R128767

398.2  
[15.677]

FFOB



Ø88.9 [3.5]



| BILL OF MATERIALS |   |                       |  |
|-------------------|---|-----------------------|--|
| RE530892          | 1 | KIT, FAN              |  |
| R524135           | 1 | FAN, 32" SUCTION      |  |
| R128767           | 1 | SPACER, FAN, 126MM    |  |
| 19M7958           | 6 | SCREW, METRIC FLANGED |  |

RE531211 JD90 1/1 B

9701

CRANK

101937DD 2005-11-30 CAM CAM  
DECISION DATE BY CHK

DRW RL DRW REV  
COMPLETE 2.2

DESCRIPTION: 32" SUCTION FAN, W/ SPACER

DEERE & COMPANY  
MOLINE, ILLINOIS 61265

| OPTION CODE | ENGINE MODEL | REF. P/N | MAT'L               | VERSION | SCALE | UNIT        |
|-------------|--------------|----------|---------------------|---------|-------|-------------|
| 9701        | 6090HF485    | RE530892 | ASM. MULTI MATERIAL | JD90    | NONE  | INCH/METRIC |
|             |              | NAME     | DRAWING             |         |       |             |
|             |              |          | 32" SUCTION FAN     |         |       |             |
|             |              |          | KIT                 |         |       |             |

DRW SCAD NORMAN 2005-11-11  
SUBMITTING UNIT  
DO

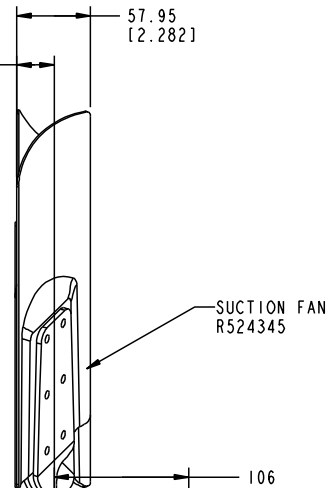
RE531211 B

PrO/ENGINEER

RE531212 JD90 1/1 B

29.31  
[1.154]

57.95  
[2.282]



SUCTION FAN  
R524345

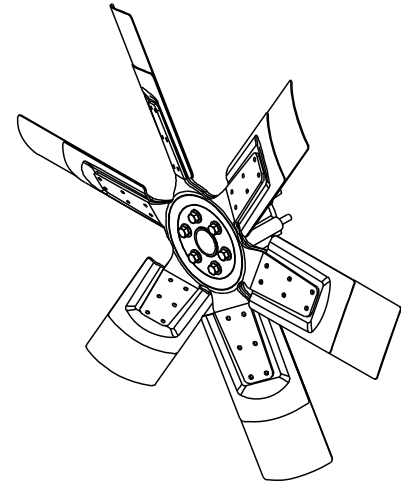
106  
[4.173]

FAN SPACER  
H175016

425  
[16.732]

378.2  
[14.89]

FFOB



Ø88.9 [3.5]

Ø50.8 [2.0]

6X M10 X 140  
FLANGED CAP SCREW 19M8896

| BILL OF MATERIALS |   |                       |  |
|-------------------|---|-----------------------|--|
| RE531239          | 1 | KIT, FAN              |  |
| R524345           | 1 | FAN, 32" SUCTION      |  |
| H175016           | 1 | SPACER, FAN, 106MM    |  |
| 19M8896           | 6 | SCREW, METRIC FLANGED |  |

RE531212 JD90 1/1 B

9701

CRANK

|             |            |     |     |
|-------------|------------|-----|-----|
| 101937DD    | 2005-11-30 | CAM | CAM |
| DESCRIPTION | DATE       | BY  | CHK |

DESCRIPTION: 32" SUCTION FAN, W/ SPACER

|          |         |
|----------|---------|
| DRW DL   | DRW REV |
| COMPLETE | 2.2     |

DEERE & COMPANY  
MOLINE, ILLINOIS 61265

| OPTION CODE | ENGINE MODEL | REF. P/N | MAT'L           | VERSION | SCALE | UNIT |
|-------------|--------------|----------|-----------------|---------|-------|------|
| 9701        | 6D90HF485    | RE531239 | MULTI MATERIAL  | JD90    | NONE  | DO   |
|             |              | NAME     | DRAWING         |         |       |      |
|             |              |          | 32" SUCTION FAN |         |       |      |
|             |              |          | KIT             |         |       |      |

|          |   |
|----------|---|
| RE531212 | B |
|----------|---|

Pro/ENGINEER

RE531213 JD90 1/1 B

50.27  
[1.979]

75.79  
[2.984]

BLOWER FAN  
R524136

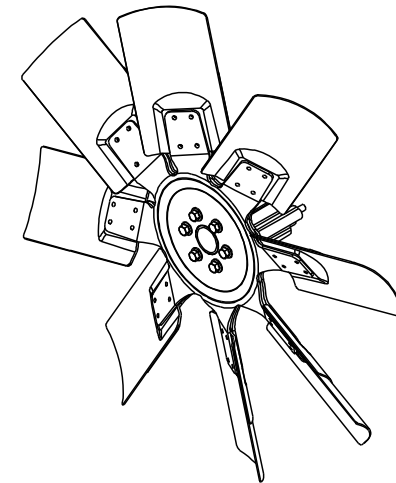
144  
[5.669]

FAN SPACER  
R134199

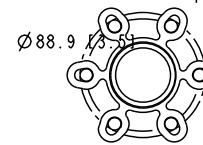
348.5  
[13.72]

442  
[17.402]

FFOB



6X M10 X 120  
FLANGED CAP SCREW R113464



Ø50.8 [2.0]

| BILL OF MATERIALS |   |                       |  |
|-------------------|---|-----------------------|--|
| RE530893          | 1 | KIT, FAN              |  |
| R524136           | 1 | FAN, 32" BLOWER       |  |
| R134199           | 1 | SPACER, FAN, 144MM    |  |
| 19M8598           | 6 | SCREW, METRIC FLANGED |  |

RE531213 JD90 1/1 B

9701

CRANK

|          |            |     |     |
|----------|------------|-----|-----|
| 101937DD | 2006-03-14 | CAM | CAM |
| DECISION | DATE       | BY  | CHK |

DESCRIPTION: 32" BLOWER FAN, W/ SPACER

|          |         |
|----------|---------|
| DRW RL   | DRW REV |
| COMPLETE | 2.2     |

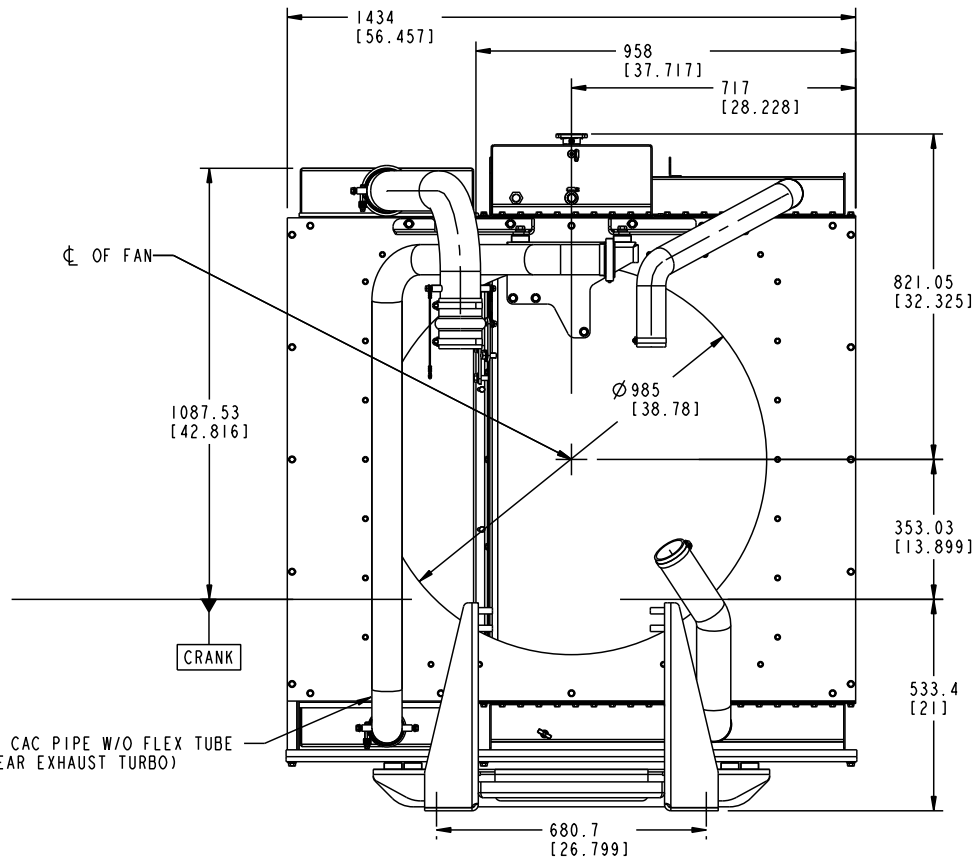
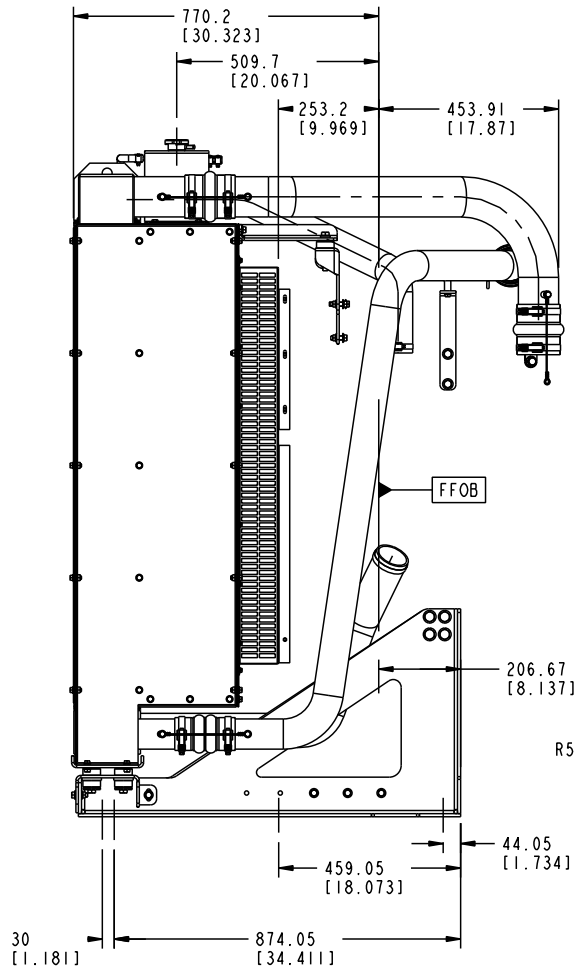
DEERE & COMPANY  
MOLINE, ILLINOIS 61265

| OPTION CODE            | ENGINE MODEL | REF. P/N | MAT'L               | VERSION | SCALE | LINCH           |
|------------------------|--------------|----------|---------------------|---------|-------|-----------------|
| 9701                   | 6090HF485    | RE530893 | ASM. MULTI MATERIAL | JD90    | NONE  | DO              |
| NAME                   |              |          | DRAWING             |         |       |                 |
|                        |              |          | 32" BLOWER FAN      |         |       |                 |
|                        |              |          | KIT                 |         |       |                 |
| P/N                    |              |          |                     |         |       | SUBMITTING UNIT |
| CADD NORMAN 2005-11-17 |              |          |                     |         |       | DO              |
| RE531213               |              |          |                     |         |       | B               |

Pro/ENGINEER



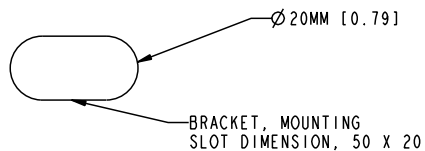
RE532207 JD90 1/3 B



NOTE:  
SHOWING INDUSTRIAL COOLING PACKAGE (RE532365) W/ LOW TEMPERATURE CAC PIPE KIT FOR REAR EXHAUST TURBO

BILL OF MATERIALS - SHOWN

| OPTION CODE | JOHN DEERE PART NUMBER | DESCRIPTION                     |
|-------------|------------------------|---------------------------------|
| 97CA        | RE531255               | KIT, MOUNTING BRACKET, COMPLETE |
| 97AC        | RE532365               | COOLING PACKAGE (500HP - 600HP) |
| 97AD        | RE531424               | TANK, DEAERATION                |
| 97CE        | RE532367               | KIT, HOSE AND PIPING,           |



|           |            |     |     |
|-----------|------------|-----|-----|
| 103305SD0 | 2007-02-28 | CAM | CAM |
| DECISION  | DATE       | BY  | CHK |

DESCRIPTION: ENGINE COOLING PACKAGE KIT  
353MM FAN HT

| OPTION CODE | ENGINE MODEL | REF. P/N | MAT'L | VERSION | SCALE | INCH/METRIC | DATE       | UNIT |
|-------------|--------------|----------|-------|---------|-------|-------------|------------|------|
| 97AA        | 6135HF485    |          |       | JD90    | NONE  | DO          | 2006-03-20 | DO   |
| 97AB        |              |          |       |         |       |             |            |      |
| 97AC        |              |          |       |         |       |             |            |      |

DEERE & COMPANY  
MOLINE, ILLINOIS 61265

SCALE NONE  
INCH/METRIC DO

RE532207 B

Pro/ENGINEER

RE532207 JD90 1/3 B

97AA 97AB 97AC

RE532207 JD90 2/3 B

R524428 - CAC PIPE W/ FLEX TUBE (FRONT EXHAUST TURBO)

1/4" ID VENT HOSE TO ENGINE

Ø20 [0.8] COOLANT RETURN PORT

BOTH CABLES ATTACH TO RESTRAINT MOUNTING BRACKET

METAL FLEX TUBE

FFOB

CRANK

428.97  
[16.889]

104.43  
[4.111]

80  
[3.15]

644.17  
[25.361]

724.17  
[28.511]

NOTE:  
SHOWING GEN-SET COOLING PACKAGE (RE531258)  
W/ HIGH TEMPERATURE CAC PIPE KIT FOR FRONT EXHAUST TURBO

BILL OF MATERIALS - SHOWN

| OPTION CODE | JOHN DEERE PART NUMBER | DESCRIPTION                       |
|-------------|------------------------|-----------------------------------|
| 97CA        | RE531255               | KIT, MOUNTING BRACKET, COMPLETE   |
| 97AA        | RE531258               | COOLING PACKAGE (GEN-SET)         |
| 97AD        | RE531424               | TANK, DEAERATION                  |
| 97CC        | RE531423               | KIT, HOSE AND PIPING, RAD AND CAC |

103305DD 2007-02-28 CAM CAM  
DECISION DATE BY CHK

DESCRIPTION: ENGINE COOLING PACKAGE KIT  
353MM FAN HT

| DRW RL   | DRW REV |
|----------|---------|
| CHANGING | 2.3     |

DEERE & COMPANY  
MOLINE, ILLINOIS 61265

| OPTION CODE | ENGINE MODEL | REF. P/N | MAT'L | VERSION | SCALE | UNIT   |
|-------------|--------------|----------|-------|---------|-------|--------|
| 97AA        | 6135HF485    |          |       | JD90    | NONE  | INCH   |
| 97AB        |              |          |       |         |       | METRIC |
| 97AC        |              |          |       |         |       | DO     |

NAME: DRAWING COOLING PACKAGE KIT

DATE: 2006-03-29

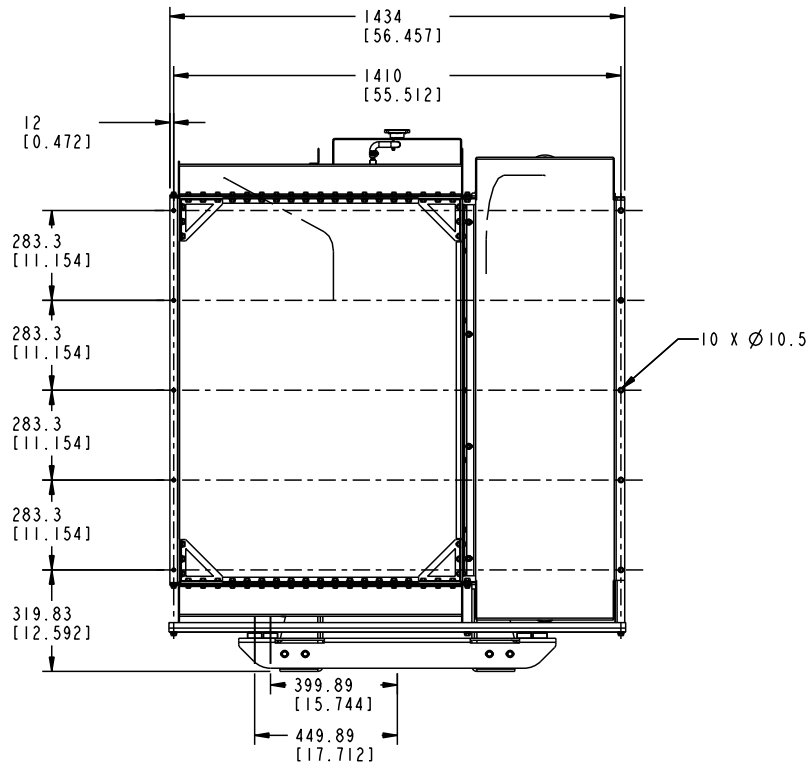
RE532207 B

Pro/ENGINEER

RE532207 JD90 2/3 B

97AA 97AB 97AC

RE532207 JD90 3/3 B



| AVAILABLE KITS FOR 6135HF485 ENGINE COOLING PACKAGES |  |   |
|--|--|---|
| OPTION CODE  | JOHN DEERE PART NUMBER                         | DESCRIPTION                                     |
| 97AA   | RE531258                                       | COOLING PACKAGE (GEN-SET)                       |
| 97AB   | RE531259                                       | COOLING PACKAGE (350HP - 450HP)                 |
| 97AC   | RE532365                                       | COOLING PACKAGE (500HP - 600HP)                 |
| 97AD   | RE531424                                       | TANK, DEAERATION                                |
| 97CA   | RE531255                                       | KIT, MOUNTING BRACKET, COMPLETE                 |
| 97CB   | RE531422                                       | KIT, HOSE AND TUBE, COMPLETE (GEN-SET), REAR EX |
| 97CC   | RE531423                                       | KIT, HOSE AND TUBE, COMPLETE (GEN-SET), FR EX   |
| 97CD   | RE532366                                       | KIT, HOSE AND PIPING, FR EX W/O MARMAN FLANGE   |
| 97CE   | RE532367                                       | KIT, HOSE AND PIPING, REAR EX W/O MARMON FLANGE |
| 97CF   | RE531496                                       | GUARD KIT, BELT                                 |
| ADDITIONAL KITS NOT SOLD / SERVICED BY JOHN DEERE    |  |   |
| REFERENCE ONLY                                       | OPTIONAL, REAR LEGS, SAE #1 (SRF P/N 22100102) |   |
| REFERENCE ONLY                                       | KIT, OPTIONAL, STONE GUARD (SRF P/N 99700001)  |   |

**NOTES:**

1. COOLING PACKAGE (RE531258) IS DESIGNED FOR GEN-SET RATINGS. THIS PACKAGE IS ALSO RECOMMENDED FOR HIGH INDUSTRIAL RATINGS WHERE THE TURBO COMPRESSOR OUTLET TEMPERATURE IS ABOVE 250°C (482°F).

FOR INSTALLATION GUIDANCE IN HIGH TEMPERATURE APPLICATIONS, PLEASE CONTACT YOUR APPLICATION ENGINEER.

2. NOT TO EXCEED 2.5G

3. RADIATOR EXTERNAL FIN DENSITY IS 9.9 FINS PER INCH

4. FOR ENGINE MUST SELECT OPTIONS AND KIT COMPATABILITY, REFER TO THE COOLING PACKAGE KIT LISTS / MUST SELECTS (EXCEL SPREADSHEET).

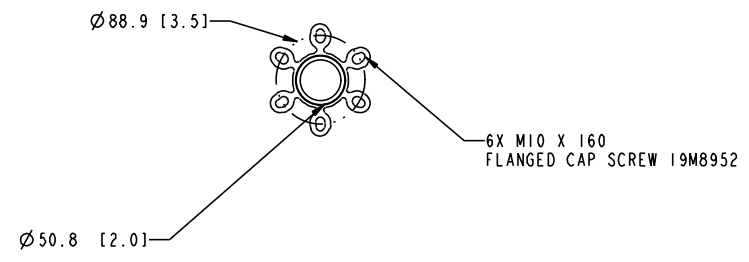
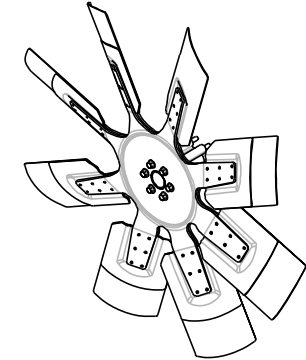
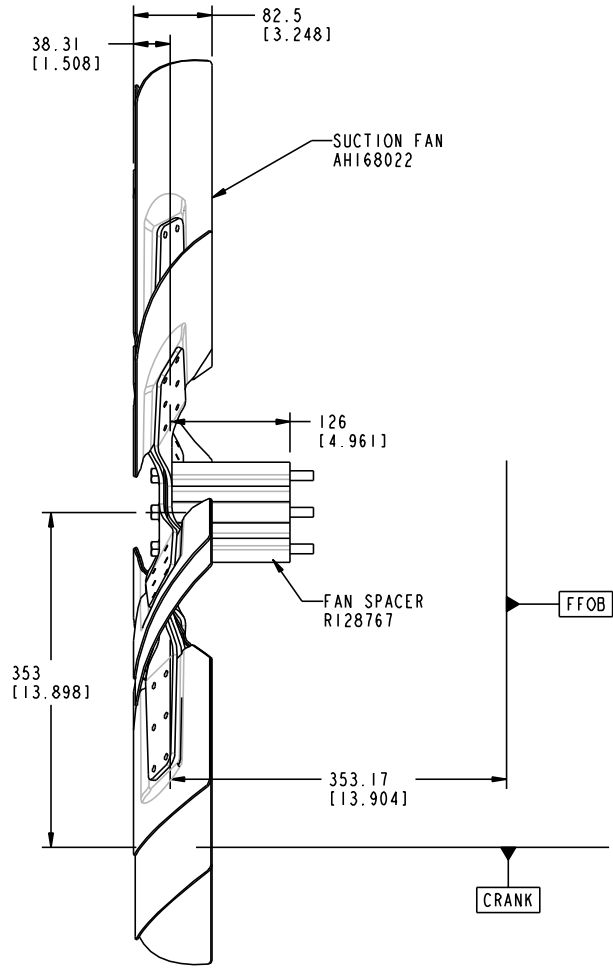
RE532207 JD90 3/3 B

97AA 97AB 97AC

|   |              |          |       |   |         |
|---|--------------|----------|-------|---|---------|
| 103305DD  | 2007-02-28   | CAM      | CAM   | DRW RL                                    | DRW REV |
| DECISION  | DATE         | BY       | CHK   | CHANGING                                  | 2.3     |
| DESCRIPTION: ENGINE COOLING PACKAGE KIT<br>353MM FAN HT |              |          |       | DEERE & COMPANY<br>MOLINE, ILLINOIS 61265 |         |
| OPTION CODE   | ENGINE MODEL | REF. P/N | MAT'L | SCALE                                     | UNIT    |
| 97AA  | 6135HF485    |          |       | 1:1                                       | INCH    |
| 97AB  |              |          |       |   | METRIC  |
| 97AC  |              |          |       |   |         |
| NAME: DRAWING COOLING PACKAGE KIT                       |              |          |       | SUBMITTING UNIT: DO                       |         |
|   |              |          |       | RE532207 B                                |         |

Pro/ENGINEER

RE532369 JD90 1/3 B



| BILL OF MATERIALS |   |                                    |  |
|-------------------|---|------------------------------------|--|
| RE530894          | 1 | KIT, FAN (HIGH AIR FLOW - SUCTION) |  |
| AH168022          | 1 | FAN, 38" SUCTION                   |  |
| R128767           | 1 | SPACER, FAN (126MM)                |  |
| 19M8952           | 6 | SCREW, METRIC FLANGE               |  |

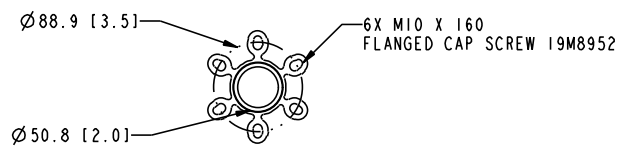
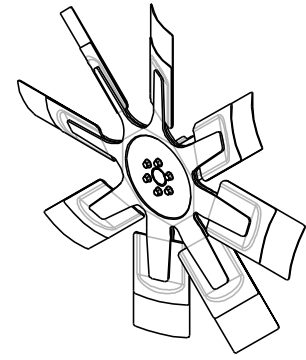
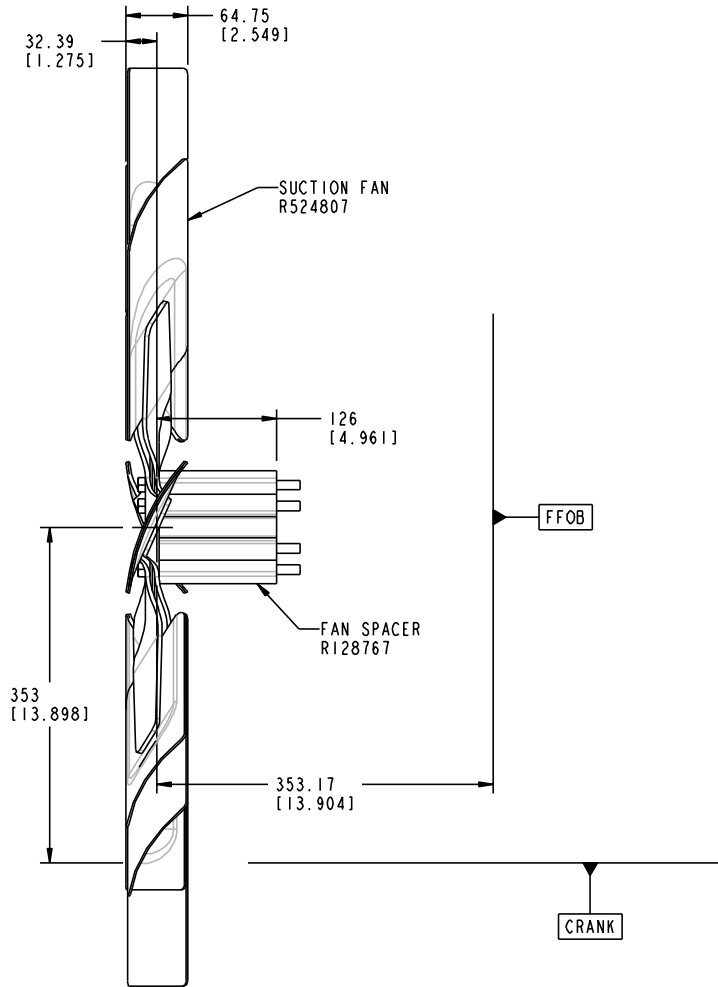
RE532369 JD90 1/3 B

9701

|  |              |          |       |     |                |         |       |      |      |   |         |
|--|--------------|----------|-------|-----|----------------|---------|-------|------|------|---|---------|
| 102544DD   | 2006-07-17   | CAM      | CAM   |     |                |         |       |      |      | DRW RL                                    | DRW REV |
| DESIGN   | DATE         | BY       | CHK   |     |                |         |       |      |      | COMPLETE                                  | 1.3*    |
| DESCRIPTION: 38" SUCTION AND BLOWER FANS W/ SPACER |              |          |       |     |                |         |       |      |      | DEERE & COMPANY<br>MOLINE, ILLINOIS 61265 |         |
| OPTION CODE  | ENGINE MODEL | REF. P/N | MAT'L | ASM | MULTI MATERIAL | VERSION | SCALE | NONE | UNIT | INCH                                      | METRIC  |
| 9701   | 6135HF485    |          |       |     |                | JD90    |       |      | DO   |   |         |
| NAME: DRAWING 38" FAN KIT                          |              |          |       |     |                |         |       |      |      | RE532369 B                                |         |

Pro/ENGINEER

RE532369 JD90 2/3 B



| BILL OF MATERIALS |   |                                   |  |
|-------------------|---|-----------------------------------|--|
| RE532281          | 1 | KIT, FAN (LOW AIR FLOW - SUCTION) |  |
| R524807           | 1 | FAN, 38" SUCTION                  |  |
| R128767           | 1 | SPACER, FAN (126MM)               |  |
| 19M8952           | 6 | SCREW, METRIC FLANGE              |  |

RE532369 JD90 2/3 B

9701

|  |              |          |       |          |                |         |      |   |         |
|--|--------------|----------|-------|----------|----------------|---------|------|---|---------|
| 102544DD   | 2006-07-17   | CAM      | CAM   | DECISION | DATE           | BY      | CHK  | DRW RL                                    | DRW REV |
|  |              |          |       |          |                |         |      | COMPLETE                                  | 1.3+    |
| DESCRIPTION: 38" SUCTION AND BLOWER FANS W/ SPACER |              |          |       |          |                |         |      | DEERE & COMPANY<br>MOLINE, ILLINOIS 61265 |         |
| OPTION CODE  | ENGINE MODEL | REF. P/N | MAT'L | ASM      | MULTI MATERIAL | VERSION | JD90 | SCALE                                     | NONE    |
| 9701   | 6135HF485    |          |       |          |                |         |      | UNIT                                      | DO      |
| NAME   |              |          |       |          |                |         |      | DRAWING                                   |         |
|  |              |          |       |          |                |         |      | 38" FAN                                   |         |
|  |              |          |       |          |                |         |      | KIT                                       |         |
|  |              |          |       |          |                |         |      | RE532369 B                                |         |

Pro/ENGINEER

