

Marine Engine Accessories

<u>Contents</u>	<u>Kit Number</u>	<u>Drawing Number</u>	<u>Page</u>
Marine Engine Accessory Lists (Tier 2 - pp. 3-6 / Tier 1 - pp. 7-9)			3 / 7
Marine Instrument Panels and Wiring Harnesses (Tier 2)			10
Marine Instrument Panels and Wiring Harnesses (Pre-Tier 2)			12
Marine Instrument Panels		R524757	13
Marine Instrument Panel (12-volt).....		R115267	14
Air Governor - Midland (for 6081)		RE505125.....	15
Air Compressor Kit (for 6081) - Midland 1300 with Drive-thu Capability.....		RE62417.....	16-17
Air Compressor Kit (for 6081) - Holset 13 cfm with Drive-thu Capability; Continuous Duty.....		RE70693.....	18-19
Air Compressor Kit (for 6125) - Holset 13.2 cfm; 15 cfm; 34 cfm		RE500781.....	20-22
Front Mounting Brackets, 4.5 L / 6.8 L.....		R501481	23
Vibration Isolator Kit.....		R115194	24
Exhaust Adapter		R122387	25
Engine Mounting for 8.1 L.....	RE57814.....	RE57882.....	26
Vibration Isolator		RE51887.....	27
Engine Mounting Kit for 12.5 L.....	RE527548.....	R524552	28
Closed Crankcase Kit (2 sheets)	RE505203.....	RE516949.....	29-30
Closed Crankcase Kit (2 sheets)	RE532962.....	RE532963.....	31-32
Filler Adapter (4045DFM50 / 4045TFM50 / 6068TFM50).....		R133448	33
Front PTO for 4.5L Engine (Field-installed Kit)	RE523263.....	R522963	34
Front PTO for 6.8L Engine (Field-installed Kit)	RE523264.....	R522964	35
For Gear Auxiliary Drive Kits (Duplicated from non-marine "Engine Accessory Information")			<i>Continued</i>

(For 2-D, DXF files see the Marine Engine Application DVD: MCADDWG / 2D_Acc / Mar_Acc.zip / "drawing number.")

Marine Engine Accessories: Gear Auxiliary Drive Kits

<u>Engine Model / Gear Auxiliary Drive Description</u>	<u>Gear Auxiliary Drive Kit No.</u>	<u>Drawing Number</u>	<u>Page</u>
PowerTech 4045 / 6068			
SAE "A" 9-tooth spline adaptor (Convert 5204 to 5202).....	RE500884.....	R500627.....	36
SAE "B" 13-tooth spline adaptor (Convert 5204 to 5201).....	RE500883.....	R500626.....	37
SAE "B" 13-tooth spline offset drive adaptor (Convert 5204 to 5203)	RE500885.....	R500628.....	38
SAE "B" offset drive for Midland 1300 (Convert 5204 to 5206)	RE500887.....	R500630.....	39
Bendix 550 offset drive (Convert 5204 to 5205).....	RE500886.....	R500629.....	40
Tapered Shaft Drive Gear (Used with 5204).....	T173311	R503969.....	41
PowerTech 6081			
RH Gear Auxiliary Drive, SAE "A" to front	RE62796.....	RE62799	42
LH Gear Auxiliary Drive, SAE "A" to front and rear	RE62804.....	RE62822	43
LH Gear Auxiliary Drive, SAE "A" to front, SAE "B" to rear	RE62803.....	RE62828	44
LH Gear Auxiliary Drive, Base Kit.....	RE62802.....	RE67375	45
PowerTech 6125			
Idler Gear and Bearing Assembly, SAE "C" to Rear.....	RE69480.....	RE69481	46
Hydraulic Pump Adapter, SAE "A" to front, SAE "B" to rear	RE69482.....	RE69483	47
Hydraulic Pump Adapter, SAE "B" to front, SAE "B" to rear	RE500740.....	RE500741	48

PowerTech Marine Engine Accessories (Tier 2)

		TIER 2: A - 4045DFM70; B - 4045TFM75; C - 6068TFM75; D - 6068TFM76; E - 6068SFM50; F - 6068SFM75; G - 6081AFM75; H - 6125AFM75; I - 6125SFM75								
	Part Number	A	B	C	D	E	F	G	H	I
Air Cleaner Kits										
Replacement Filter Element	RE527920						X			
Replacement Filter Element	RE530205									X
2" (50.8mm) washable air cleaner - 320 CFM (9.0M ³ /min) (For use with air intake option, 1709.)	RE505642	X								
3" (76mm) ID paper element air cleaner	RE528296				X					
4" (101.6mm) ID paper element air cleaner	RE46837	X								
4" (101.6mm) ID washable air cleaner - 1200 CFM (34M ³ /min)	RE502014		X	X		X		X		
6" (152.4mm) ID washable air cleaner - 2400 CFM (68M ³ /min) (Kit includes mounting bracket for air cleaner.)	RG32545								X	
Cleaning kit for washable air cleaners, RE505642, RE502014 and RG32545.	RE504585	X	X	X	X	X		X	X	
Closed Crankcase Kit										
Closed crankcase kit; Requires AT196258 fitting when used on 4045DFM50/70..	RE505203	X	X	X	X	X				
Closed crankcase kit; Requires AT196258 fitting when used on 4045DFM50/70..	RE532962	X	X	X	X	X		X		
Engine Mounting Kits										
Front engine support kit	RE502721	X	X	X	X	X				
Vibration isolators (quantity = 4)	RE49358	X	X							
Vibration isolators (quantity = 4)	RE52998			X	X					
Front engine support kit	RE57814							X		
Vibration isolators (quantity = 1)	RE48820					X	X	X		
Vibration isolators (quantity = 4)	RE527548								X	X
Cooling System Kits										
Coolant overflow bottle - 4 qt. (3.8 L)	AT162597	X	X	X	X	X	X	X	X	X
Radiator cap adapter flange to convert radiator cap connection to an auxiliary expansion tank connection. Requires welding a hose bib onto the adapter.	R133448	X	X	X	X	X				
Filler neck assembly for auxiliary expansion tank installed on 4.5L and 6.8L..	RE46165	X	X	X	X	X	X	X	X	X
Exhaust System Kits										
Exhaust adapter, straight, Marine Marmon	RE58443		X	X	X	X	X			
Dry Exhaust Elbow Gasket	T151881		X	X	X	X	X	X		
Double-wall Fuel Lines										
DE-10 Fuel Line Set	RE529063		X							
DE-10 Fuel Line Set	RE528046				X					
VP-44 Fuel Line Set	RE529556			X		X				
HPCR Fuel Line Set	RE529525							X		

Continued --

PowerTech Marine Engine Accessories (Tier 2)

	Part Number	TIER 2: A - 4045DFM70; B - 4045TFM75; C - 6068TFM75; D - 6068TFM76; E - 6068SFM50; F - 6068SFM75; G - 6081AFM75; H - 6125AFM75; I - 6125SFM75								
		A	B	C	D	E	F	G	H	I
Aftercooler Kits										
Seal kit	RE518060					X				
Seal & Tube Bundle kit (Includes seals from RE518060 kit.)	RE518424					X				
Insulation Blankets										
Insulation blanket kit	RE527644	X	X							
Insulation blanket kit	RE527645			X	X	X				
Insulation blanket kit	RE527646							X		
Auxiliary-Drive Gear Kits										
13-tooth spline adapter, SAE "B" (Convert 5204 to 5201) ¹	RE500883	X	X	X	X	X				
9-tooth spline adapter, SAE "A" (Convert 5204 to 5202) ¹	RE500884	X	X	X	X	X				
13-tooth spline offset drive adapter, SAE "B" (Convert 5204 to 5203) ¹	RE500885	X	X	X	X	X				
Right-hand Aux. drive kist, SAE "A"	RE62796							X		
Midland 1300 Aux. drive / Installation Kit	RE67122							X		
Holset Air Compressor Kit	RE70694							X		
Air Compressor Governor with Plugs (Kit)	RE70072							X		
Hydraulic Pump Adapter, SAE "A" w/9-tooth spline to rear	RE62804							X		
Hydraulic Pump Adapter, SAE "B" w/13-tooth spline to rear	RE62803							X		
Idler Gear Bearing Assembly, SAE "C"	RE69480								X	
Air Compressor Drive Kit (13.2, 15 & 34 CFM)	RE518293								X	
Hydraulic Pump Adapter, SAE "A" 9 teeth to front, "B" 13 teeth to rear	RE69482								X	
Hydraulic Pump Adapter, SAE "B" 13 teeth to front, "B" 13 teeth to rear	RE500740								X	

¹ Includes 5401, 5402, 5403 (Auxiliary Drive Lubrication System) parts. Reference Assembly Instructions.

Instrumentation and Controls										
Instrument Panel, Main Station 12-volt	RE516932	X								
Instrument Panel, Main Station 24-volt	RE516933	X								
Instrument Panel, Flybridge 12-volt (includes "Y" harness and twin-station gauge senders)	RE516934	X								
Instrument Panel, Flybridge 24-volt (includes "Y" harness and twin-station gauge senders)	RE516935	X								

Continued --

PowerTech Marine Engine Accessories (Tier 2)

		TIER 2: A - 4045DFM70; B - 4045TFM75; C - 6068TFM75; D - 6068TFM76; E - 6068SFM50; F - 6068SFM75; G - 6081AFM75; H - 6125AFM75; I - 6125SFM75								
	Part Number	A	B	C	D	E	F	G	H	I
Instrumentation and Controls -- Continued										
Engine Wiring Harness, 12-volt	RE502828	X								
Engine Wiring Harness, 24-volt	RE502829	X								
Extension Harness, Engine-to-Instrument Panel, 20 ft.	RE50498	X								
Extension Harness, Engine-to-Instrument Panel, 30 ft.	RE50499	X								
Electronic Throttle Control, Kit	RE503963		X	X		X	X	X	X	X
12 & 24V Main station panel (replaces RE504397 and RE504400)	RE521033		X	X		X	X	X	X	X
12 & 24V Flybridge panel (replaces RE504401 and RE504402)	RE521034		X	X		X	X	X	X	X
12 & 24V Main station Helmview, single engine	RE533925		X	X		X	X	X	X	X
12 & 24V Main station Helmview, dual engine ²	RE533927		X	X		X	X	X	X	X
12V Flybridge station Helmview, single engine	RE533926		X	X		X	X	X	X	X
24V Flybridge station Helmview, single engine	RE534103		X	X		X	X	X	X	X
12V Flybridge station Helmview, dual engine ³	RE533928		X	X		X	X	X	X	X
24V Flybridge station Helmview, dual engine ³	RE534104		X	X		X	X	X	X	X
Wiring extension kit, 10 ft (3M), Main station panel to flybridge panel	RE524189		X	X		X	X	X	X	X
Wiring extension kit, 30 ft (9M), Main station panel to flybridge panel	RE524190		X	X		X	X	X	X	X
Wiring extension, 10 ft, (3M), Transition harness to main panel	RE503687		X	X		X	X	X	X	X
Wiring extension, 30 ft, (9M), Transition harness to main panel	RE503688		X	X		X	X	X	X	X
Wiring extension kit, 10 ft, (3M), Main panel to flybridge panel (for use only with RE504401 and RE504402 panels)	RE504936					X				
Wiring extension kit, 30 ft, (9M) Main panel to flybridge panel (for use only with RE504401 and RE504402 panels)	RE504937					X				
Wiring extension, 12 ft, Engine harness to instrument panel (gen-set)	RE506969									

² Must also order RE533925.

³ Must also order either RE533926 or RE534103.

Continued --

PowerTech Marine Engine Accessories (Tier 2)

		TIER 2: A - 4045DFM70; B - 4045TFM75; C - 6068TFM75; D - 6068TFM76; E - 6068SFM50; F - 6068SFM75; G - 6081AFM75; H - 6125AFM75; I - 6125SFM75								
	Part Number	A	B	C	D	E	F	G	H	I
Instrumentation and Controls -- Continued										
Instrument panel, 12-volt (gen-set) ⁴	RE521564									
Instrument Panel Assembly Kit (gen-set)	RE508625									
Voltage Converter for 24-volt Backlighting (gen-set)	RE162448									
Transition Harness ⁵ , 12-volt, 20 ft (6M)	RE534576		X	X		X ⁶	X	X	X	X
Transition Harness ⁵ , 24-volt, 20 ft (6M)	RE534577		X	X		X ⁶	X	X	X	X
Transition Harness ⁵ , 12-volt, 39 ft (12M)	RE534578		X	X		X ⁶	X	X	X	X
Transition Harness ⁵ , 24-volt, 39 ft (12M)	RE534579		X	X		X ⁶	X	X	X	X

⁴ Use RE162448 Converter to change to a 24-volt panel.

⁵ Marine Transition Harness connects the engine wiring harness to the Main Station Instrument Panel and contains connections for throttles and the Station Select or Engine Sync features.

⁶ For engines with serial numbers after 87XXXX.

PowerTech Marine Engine Accessories (Tier 1)

	Part Number	TIER 1: J - 4045DFM50; K - 4045TFM50; L - 6068TFM50; M - 6081AFM01; N- 6125AFM01				
		J	K	L	M	N
Air Cleaner Kits						
2" (50.8mm) washable air cleaner - 320 CFM (9.0M ³ /min) (For use with air intake option, 1709.)	RE505642	X				
3" (76mm) ID paper element air cleaner	RE528296					
4" (101.6mm) ID paper element air cleaner	RE46837	X				
4" (101.6mm) ID washable air cleaner - 1200 CFM (34M ³ /min)	RE502014		X	X	X	
6" (152.4mm) ID washable air cleaner - 2400 CFM (68M ³ /min) (Kit includes mounting bracket for air cleaner.)	RG32545					X
Cleaning kit for washable air cleaners, RE505642, RE502014 and RG32545.	RE504585	X	X	X	X	X
Closed Crankcase Kit						
Closed crankcase kit; Requires AT196258 fitting when used on 4045DFM50/70..	RE505203	X	X	X		
Closed crankcase kit; Requires AT196258 fitting when used on 4045DFM50/70..	RE532962	X	X	X	X	
Engine Mounting Kits						
Front engine support kit	RE502721	X	X	X		
Vibration isolators (quantity = 4)	RE49358	X	X			
Vibration isolators (quantity = 4)	RE52998			X		
Front engine support kit	RE57814				X	
Vibration isolators (quantity = 1)	RE48820				X	
Vibration isolators (quantity = 4)	RE527548					X
Cooling System Kits						
Coolant overflow bottle - 4 qt. (3.8 L)	AT162597	X	X	X	X	X
Radiator cap adapter flange to convert radiator cap connection to an auxiliary expansion tank connection. Requires welding a hose bib onto the adapter.	R133448	X	X	X		
Filler neck assembly for auxiliary expansion tank installed on 4.5L and 6.8L..	RE46165	X	X	X	X	X
Exhaust System Kits						
Exhaust adapter, straight, Marine Marmon	RE58443		X	X		
Dry Exhaust Elbow Gasket	T151881		X	X	X	
Double-wall Fuel Lines						
DE-10 Fuel Line Set	RE529063					
DE-10 Fuel Line Set	RE528046					
VP-44 Fuel Line Set	RE529556					
HPCR Fuel Line Set	RE529525					

Continued --

PowerTech Marine Engine Accessories (Tier 1)

	Part Number	TIER 1: J - 4045DFM50; K - 4045TFM50; L - 6068TFM50; M - 6081AFM01; N- 6125AFM01				
		J	K	L	M	N
Aftercooler Kits						
Seal kit	RE518060					
Seal & Tube Bundle kit (Includes seals from RE518060 kit.)	RE518424					
Insulation Blankets						
Insulation blanket kit	RE527644					
Insulation blanket kit	RE527645					
Insulation blanket kit	RE527646					
Auxiliary-Drive Gear Kits						
13-tooth spline adapter, SAE "B" (Convert 5204 to 5201) ¹	RE500883	X	X	X		
9-tooth spline adapter, SAE "A" (Convert 5204 to 5202) ¹	RE500884	X	X	X		
13-tooth spline offset drive adapter, SAE "B" (Convert 5204 to 5203) ¹	RE500885	X	X	X		
Right-hand Aux. drive kist, SAE "A"	RE62796				X	
Midland 1300 Aux. drive / Installation Kit	RE67122				X	
Holset Air Compressor Kit	RE70694				X	
Air Compressor Governor with Plugs (Kit)	RE70072				X	
Hydraulic Pump Adapter, SAE "A" w/9-tooth spline to rear	RE62804				X	
Hydraulic Pump Adapter, SAE "B" w/13-tooth spline to rear	RE62803				X	
Idler Gear Bearing Assembly, SAE "C"	RE69480					X
Air Compressor Drive Kit (13.2, 15 & 34 CFM)	RE518293					X
Hydraulic Pump Adapter, SAE "A" 9 teeth to front, "B" 13 teeth to rear	RE69482					X
Hydraulic Pump Adapter, SAE "B" 13 teeth to front, "B" 13 teeth to rear	RE500740					X

¹ Includes 5401, 5402, 5403 (Auxiliary Drive Lubrication System) parts. Reference Assembly Instructions.

Instrumentation and Controls						
Instrument Panel, Main Station 12-volt	RE516932	X	X	X		
Instrument Panel, Main Station 24-volt	RE516933	X	X	X		
Instrument Panel, Flybridge 12-volt (includes "Y" harness and twin-station gauge senders)	RE516934	X	X	X		
Instrument Panel, Flybridge 24-volt (includes "Y" harness and twin-station gauge senders)	RE516935	X	X	X		

Continued --

PowerTech Marine Engine Accessories (Tier 1)

		TIER 1: J - 4045DFM50; K - 4045TFM50; L - 6068TFM50; M - 6081AFM01; N- 6125AFM01				
	Part Number	J	K	L	M	N
Instrumentation and Controls -- Continued						
Engine Wiring Harness, 12-volt	RE502828	X	X	X		
Engine Wiring Harness, 24-volt	RE502829	X	X	X		
Extension Harness, Engine-to-Instrument Panel, 20 ft.	RE50498	X	X	X		
Extension Harness, Engine-to-Instrument Panel, 30 ft.	RE50499	X	X	X		
Electronic Throttle Control, Kit	RE503963				X	X
12 & 24V Main station panel (replaces RE504397 and RE504400)	RE521033				X	X
12 & 24V Flybridge panel (replaces RE504401 and RE504402)	RE521034				X	X
12 & 24V Main station Helmview, single engine	RE533925				X	X
12 & 24V Main station Helmview, dual engine ²	RE533927				X	X
12V Flybridge station Helmview, single engine	RE533926				X	X
24V Flybridge station Helmview, single engine	RE534103				X	X
12V Flybridge station Helmview, dual engine ³	RE533928				X	X
24V Flybridge station Helmview, dual engine ³	RE534104				X	X
Wiring extension kit, 30 ft, (9M) Main panel to flybridge panel (for use only with RE504401 and RE504402 panels)	RE504937				X	X
Wiring extension, 12 ft, Engine harness to instrument panel (gen-set)	RE506969					X
Instrument panel, 12-volt (gen-set) ⁴	RE521564					X
Instrument Panel Assembly Kit (gen-set)	RE508625					X
Voltage Converter for 24-volt Backlighting (gen-set)	RE162448					X
Transition Harness ⁵ , 12-volt, 20 ft (6M)	RE522727					
Transition Harness ⁵ , 24-volt, 20 ft (6M)	RE522728					
Transition Harness ⁵ , 12-volt, 39 ft (12M)	RE522729					
Transition Harness ⁵ , 24-volt, 39 ft (12M)	RE522730					

² Must also order RE533925.³ Must also order either RE533926 or RE534103.⁴ Use RE162448 Converter to change to a 24-volt panel.⁵ Marine Transition Harness connects the engine wiring harness to the Main Station Instrument Panel and contains connections for throttles and the Station Select or Engine Sync features.

MARINE INSTRUMENT PANELS AND WIRING HARNESES (TIER 2)

The Tier-2 electronic marine propulsion engines have a unique wiring schematic for connecting to the instrument panels. John Deere marine instrument panels, engine and transition wiring harnesses and extension harnesses provide the functions necessary to start, stop, and monitor the engine. There are also connections provided for engine synchronization and station select. The kits below can be matched to meet the specific needs of the vessel. Keep in mind that the maximum total length of the CAN bus system is 130 ft (39M).

Marine Transition Harness

The marine transition harness connects the engine wiring harness to the main station instrument panel. The harness contains connections for analog throttles, engine synchronization, starter relay, and station select as well as the engine and instrument panel connections. These harnesses may not be connected together to extend the length of the leads.

Marine transition harness, 12V, 20 ft (6m)	RE522727
Marine transition harness, 24V, 20 ft (6m)	RE522728
Marine transition harness, 12V, 39 ft (12m)	RE522729
Marine transition harness, 24V, 39 ft (12m)	RE522730

Extension Harness

The marine extension harness may be extended on the instrument panel end by using the following extension harnesses. These harnesses will extend the CAN, power, and Start/Stop circuit. The throttle connection will have to be extended by creating a separate harness. Multiple harnesses may be connected to reach the main station instrument panel.

Wiring Extension, 10 ft (3m)	RE503687
Wiring Extension, 30 ft (9m)	RE503688

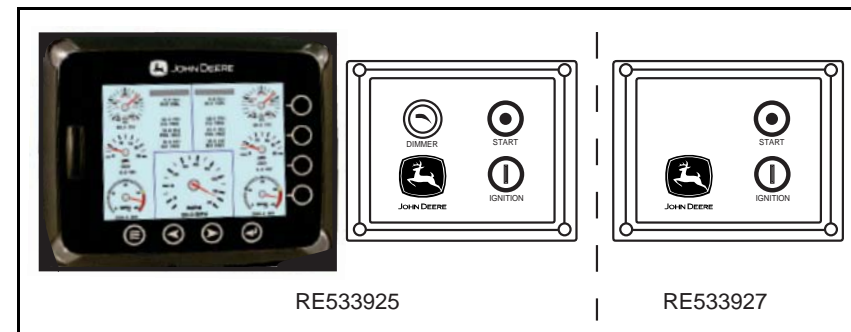
The wheelhouse throttle connector is a Packard 12015793.

Main Station Instrument Panels

The main instrument panel serves as the primary panel for all propulsion systems. The connector bundle on the back of the instrument panel will connect into the Marine Transition Harness or wiring extensions. The panel includes a PowerView electronic display as well as a key switch, dimmer, alarm, and analog style gauges.

12 & 24V Main Station Panel	RE521033
-----------------------------	----------

Another option is the Helmview Panel. This fully digital display can display engine information for multiple propulsion engines on the same display while separate key switch panels are used to start and stop each engine.



12 & 24V Main Station Helmview, Single Engine	RE533925
12 & 24V Main Station Helmview, Dual Engine (Must also order RE533925.)	RE533927

Flybridge Station Extension Harnesses

These harnesses should be used to connect the main station instrument panel to the flybridge panels. The extensions include wiring for the start/stop circuit, power, and the CAN bus. Multiple kits may be connected to meet the needs of the vessel.

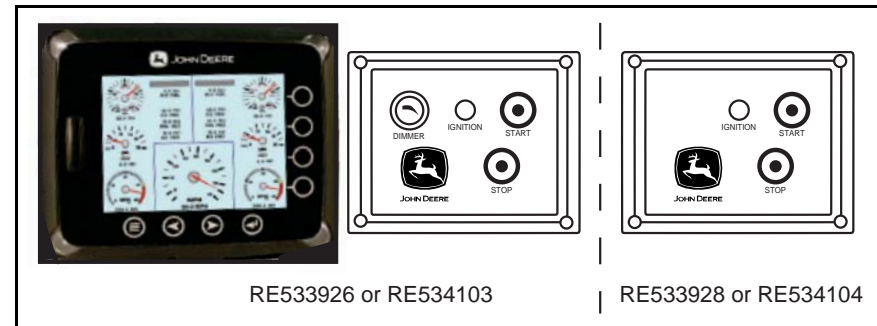
Wiring Extension Kit, Main Station to flybridge panel, 10 ft (3M)	RE524189
Wiring Extension Kit, Main Station to flybridge panel, 30 ft (9M)	RE524190

Flybridge Instrument Panels

Engine installations that require two instrument panels to monitor the engine need to use the flybridge instrument panel. This panel includes the same features of the main station panel except for the key switch.

12 & 24V Main Station Panel	RE521034
-----------------------------	----------

There is also a Helmview Panel available for the flybridge location as well. Separate key switch panels are required for multiple engine installations.



12V Flybridge Station Helmview, Single Engine	RE533926
24V Flybridge Station Helmview, Single Engine	RE534103
12V Flybridge Station Helmview, Dual Engine (Must also order RE533926 or RE534103.)	RE533928
24V Flybridge Station Helmview, Dual Engine (Must also order RE533926 or RE534103.)	RE534104

Mixing Instrument Panel Styles

It is possible to use the Powerview instrument panels and the Helmview display panels at different locations in the vessel. The customer wiring connections are the same for both panels.

MARINE INSTRUMENT PANELS AND WIRING HARNESSES (PRE-TIER 2)

Pre-Tier-2 Marine propulsion engines have energize-to-stop fuel systems. John Deere marine instrument panels, engine wiring harness and extension harnesses provide the functions necessary to start, stop and monitor the engine. The kits below can be matched to meet the specific needs of the vessel. Installation instructions, as needed, are included in all kits.

Engine Wiring Harnesses and Senders

12V wiring harness	RE502828
24V wiring harness	RE502829

Includes:

- Wiring harness
- Single panel senders and switches
- Required relays
- Attaching hardware

The kit includes all the parts needed to install the harness, except for plastic tie-downs.

Extension Harnesses

20 ft (6.10 m) extension harness	RE50498
30 ft (9.14 m) extension harness	RE50499

The engine wiring harness and instrument panel pigtail are about 1 ft (300 mm) long. The extension harness provides the added length to run from the engine to the instrument panel(s). Harnesses can be connected in series (maximum of three) to reach remote panel locations.

Main Instrument Panels

12V, 30-pulse main panel	RE502609
24V, 30-pulse main panel	RE502611

Includes:

- Assembled instrument panel with 12 in. (300 mm) pigtail and connector

The main instrument panel serves as the primary panel for all propulsion systems. A ten pin connector on the one foot long pigtail matches the connector on the engine wiring harness and extension harnesses. The panel includes an hour meter and key switch for the engine.

Flybridge Instrument Panels

12V, 30-pulse flybridge panel	RE502800
24V, 30-pulse flybridge panel	RE502801

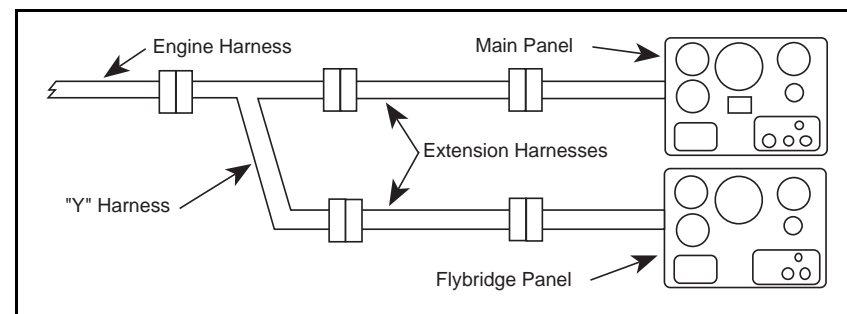
Includes:

- Assembled instrument panel with 12 in (300 mm) pigtail and connector
- "Y" harness
- Dual panel senders and switches

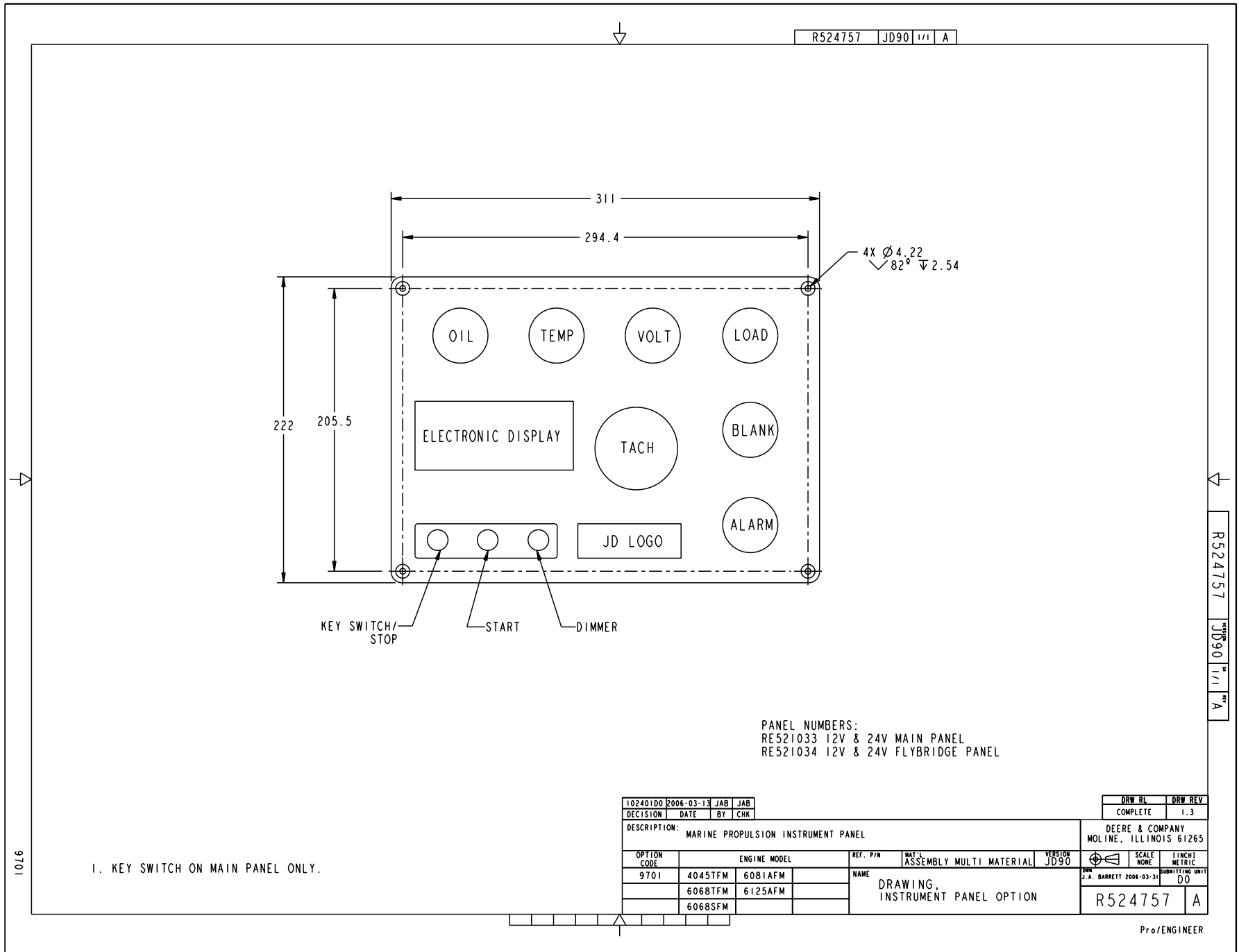
Engine installations that require two instrument panels to monitor the engine need to use the flybridge instrument panel. This panel has all the same functions as the main panel, except the key switch and hour meter.

IMPORTANT:

Senders included with the flybridge instrument panel MUST be installed when two panels are used. Use of the senders for single panels will result in high oil pressure and low coolant temperature readings. (Dual senders are stamped with a "D" at the base.)



Instrument Panel Wiring



R524757 JD90 1/1 A

R524757 JD90 1/1 A

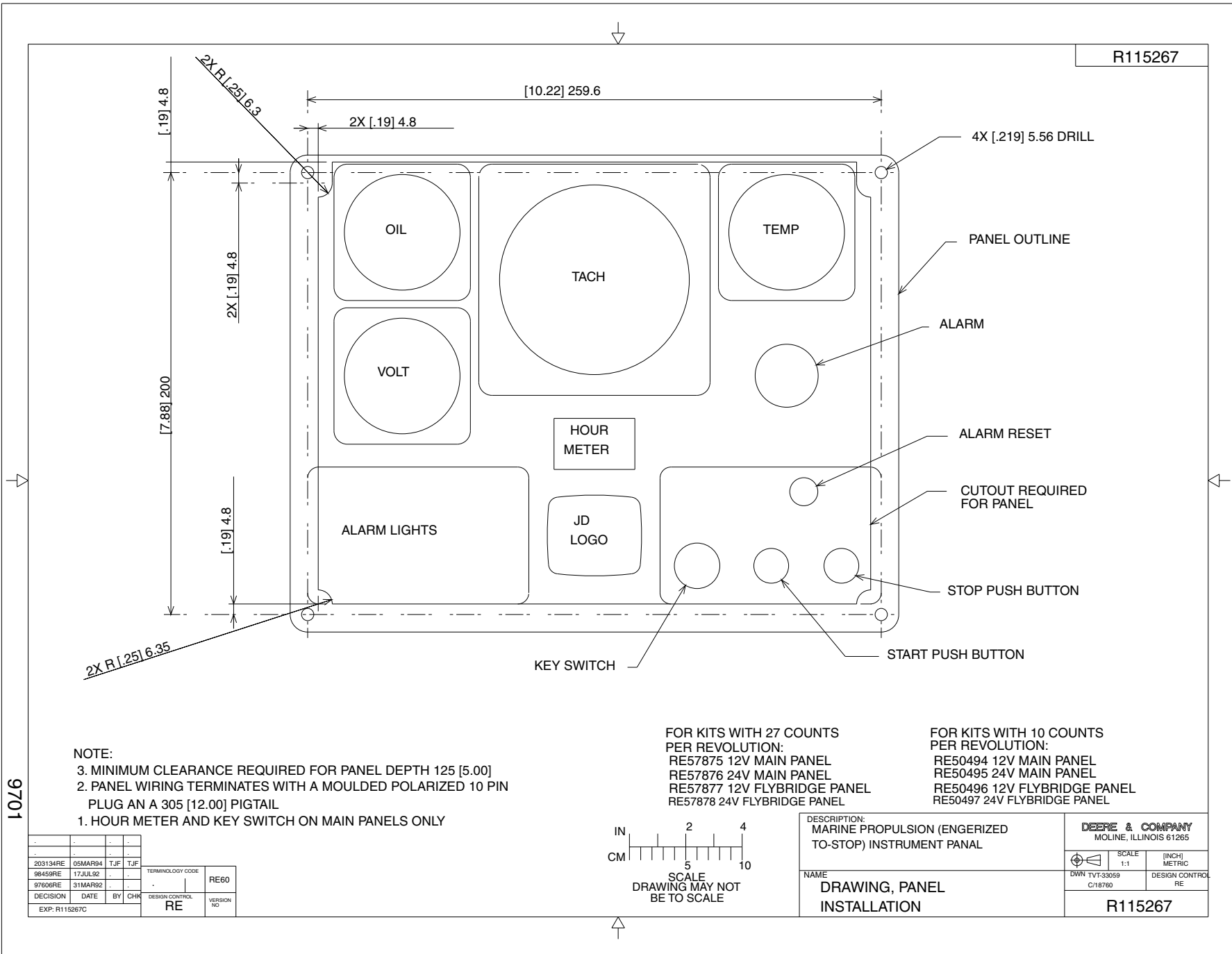
PANEL NUMBERS:
 RE521033 12V & 24V MAIN PANEL
 RE521034 12V & 24V FLYBRIDGE PANEL

1. KEY SWITCH ON MAIN PANEL ONLY.

102401DO 2006-03-13 JAB JAB				DRAW RL		DRAW REV	
DECISION DATE BY CHK				COMPLETE		1.3	
DESCRIPTION: MARINE PROPULSION INSTRUMENT PANEL						DEERE & COMPANY MOLINE, ILLINOIS 61265	
OPTION CODE	ENGINE MODEL	REF. P/N	MAT'L ASSEMBLY MULTI MATERIAL	VERSION	SCALE NONE	UNIT (INCH) METRIC	SUBMITTING UNIT
9701	4045TFM 6081AFM			JD90		DO	
	6068TFM 6125AFM						
	6068SFM						
DRAWING, INSTRUMENT PANEL OPTION						R524757 A	

Pro/ENGINEER

R115267



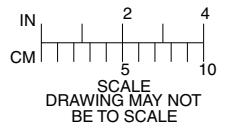
NOTE:
 3. MINIMUM CLEARANCE REQUIRED FOR PANEL DEPTH 125 [5.00]
 2. PANEL WIRING TERMINATES WITH A MOULDED POLARIZED 10 PIN PLUG AN A 305 [12.00] PIGTAIL
 1. HOUR METER AND KEY SWITCH ON MAIN PANELS ONLY

FOR KITS WITH 27 COUNTS PER REVOLUTION:
 RE57875 12V MAIN PANEL
 RE57876 24V MAIN PANEL
 RE57877 12V FLYBRIDGE PANEL
 RE57878 24V FLYBRIDGE PANEL

FOR KITS WITH 10 COUNTS PER REVOLUTION:
 RE50494 12V MAIN PANEL
 RE50495 24V MAIN PANEL
 RE50496 12V FLYBRIDGE PANEL
 RE50497 24V FLYBRIDGE PANEL

1076

203134RE	05MAR94	TJF	TJF						
98459RE	17JUL92								
97606RE	31MAR92								
DECISION	DATE	BY	CHK	DESIGN CONTROL	VERSION NO				
				RE	RE60				
EXP: R115267C									

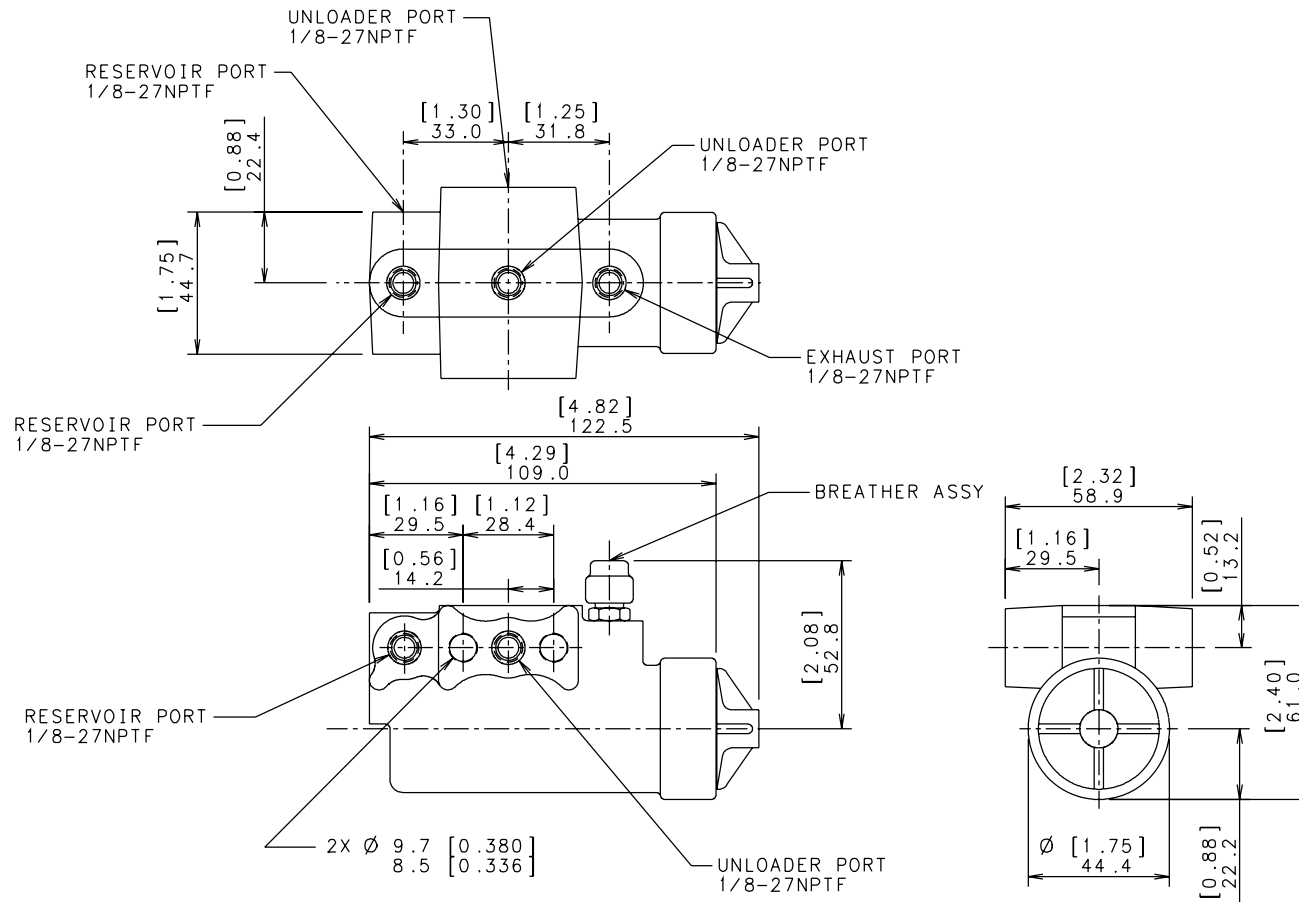


DESCRIPTION:
 MARINE PROPULSION (ENGERIZED TO-STOP) INSTRUMENT PANAL

NAME
 DRAWING, PANEL INSTALLATION

DEERE & COMPANY MOLINE, ILLINOIS 61265			
DWN TVT-33059	SCALE 1:1	(INCH) METRIC	DESIGN CONTROL RE
C/18760			
R115267			

PART NUMBER RE505125 REV A
SHEET 1 OF 1



KIT #RE70072
REMOTE MOUNT

CUT IN PRESSURE (PSI) = 105 +5/-0
CUT OUT PRESSURE (PSI) = 22.5 ± 7.5 ABOVE CUT IN PRESSURE

TERMINOLOGY CODE				RG40
503186RE	19990726	WRH	DESIGN CONTROL	VERSION NO
DECISION	DATE	BY	CHK	RG

DESCRIPTION:

NAME
KIT 6081 2CYL.
AIR GOVERNOR

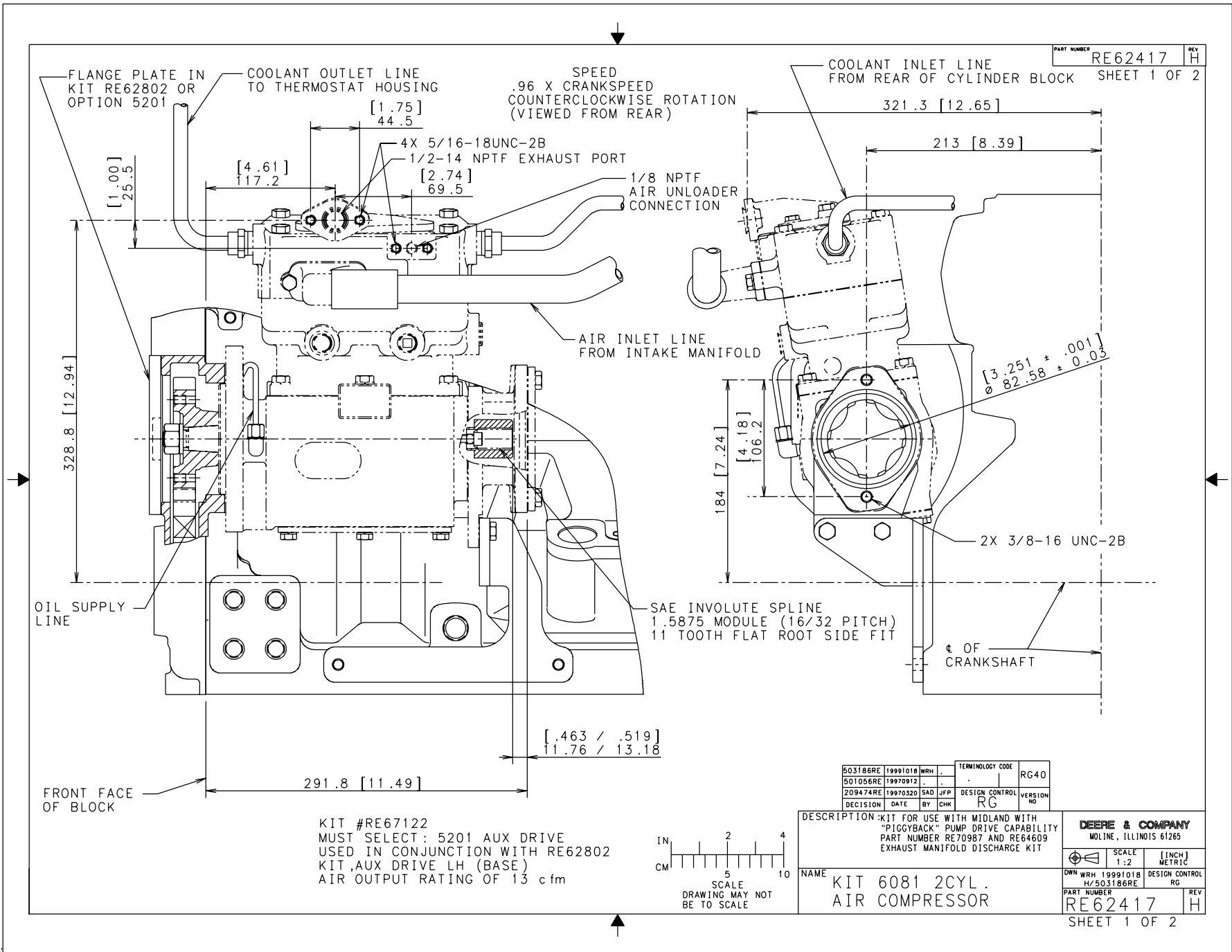
DEERE & COMPANY
MOLINE, ILLINOIS 61265

SCALE 1:1 [INCH] METRIC

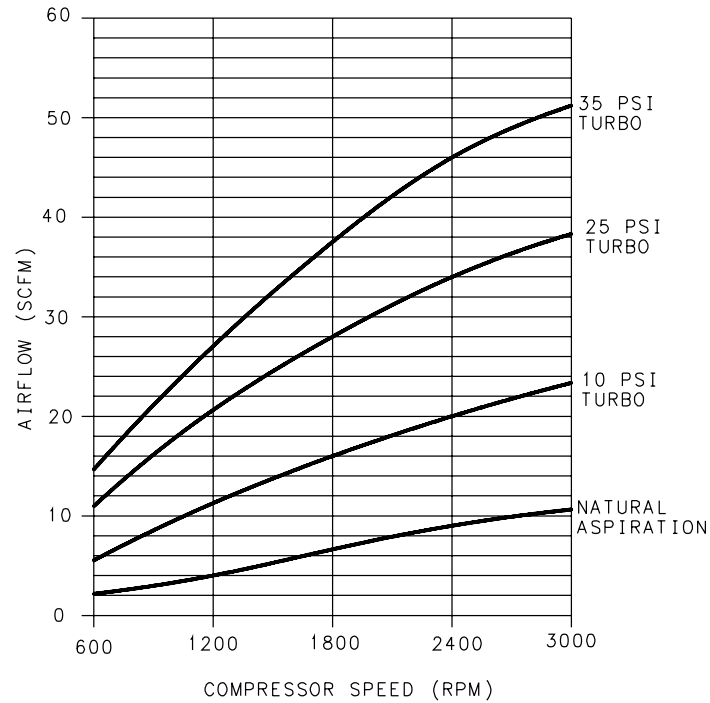
OWN WRH 19990719 A/503186RE DESIGN CONTROL RG

PART NUMBER RE505125 REV A

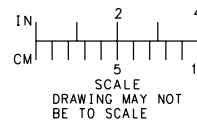
SHEET 1 OF 1



PART NUMBER RE62417
SHEET 2 OF 2



KIT #RE67122
MUST SELECT: 5201 AUX DRIVE
USED IN CONJUNCTION WITH RE62802
KIT,AUX DRIVE LH (BASE)
AIR OUTPUT RATING OF 13 cfm



503186RE	19991018	WRH	TERMINOLOGY CODE	RG40
501056RE	19970912	.	DESIGN CONTROL	VERSION NO
209474RE	19970320	SAD JFP	RG	
DECISION	DATE	BY	CHK	

DESCRIPTION KIT FOR USE WITH MIDLAND WITH "PIGGYBACK" PUMP DRIVE CAPABILITY PART NUMBER RE70987 AND RE64609 EXHAUST MANIFOLD DISCHARGE KIT

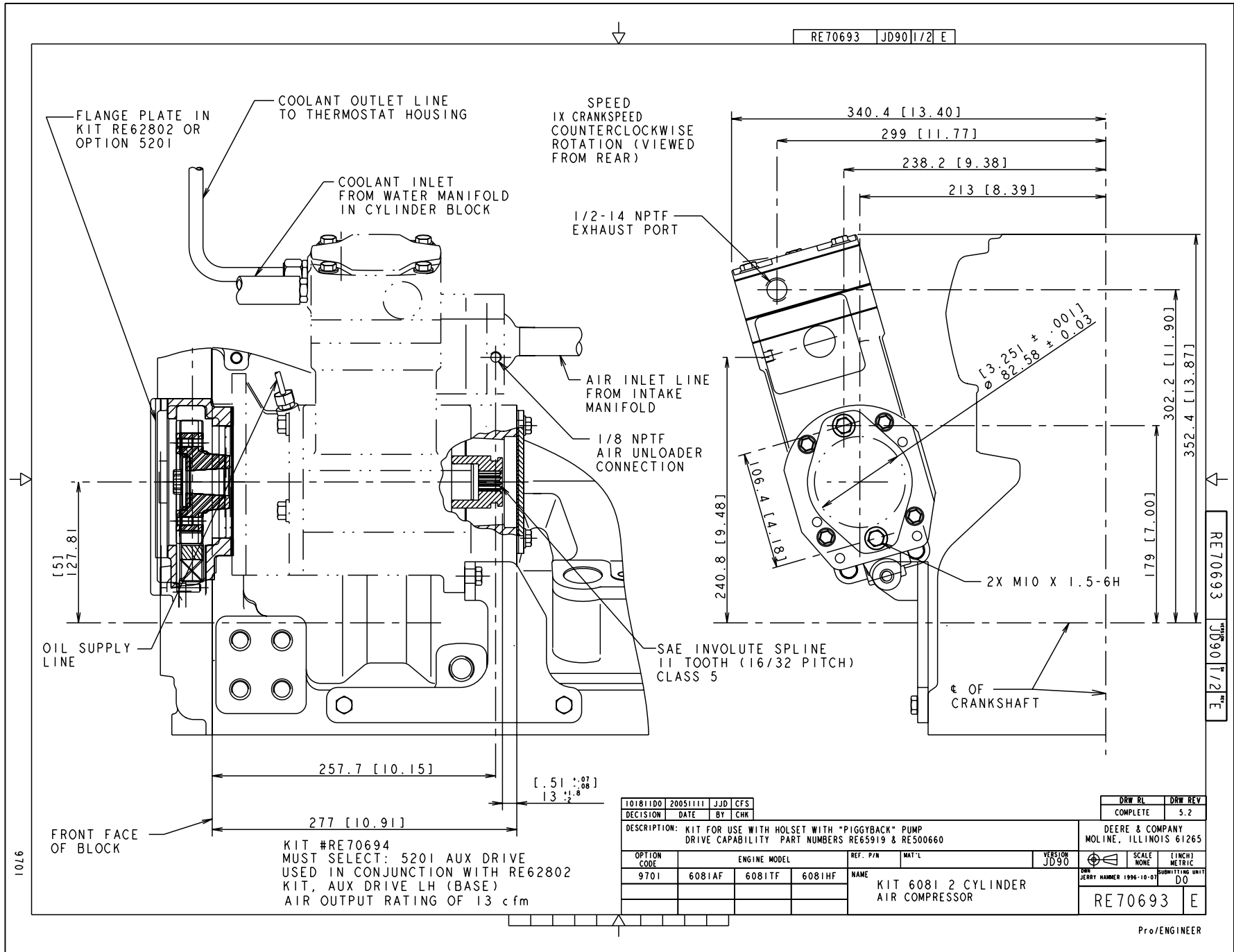
DEERE & COMPANY
MOLINE, ILLINOIS 61265

NAME KIT 6081 2CYL.
AIR COMPRESSOR

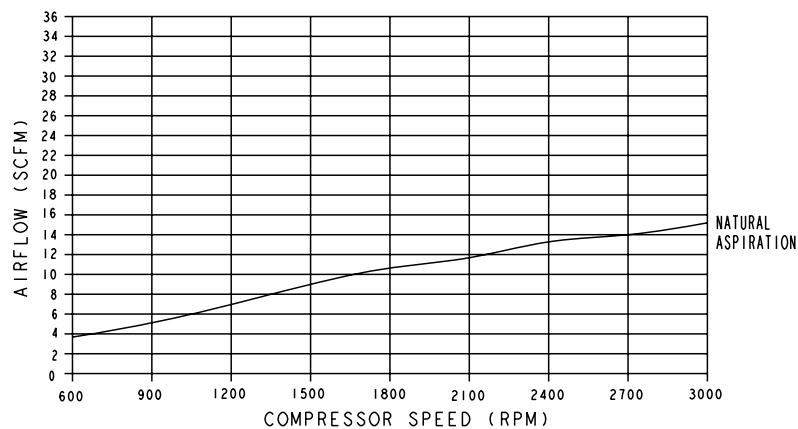
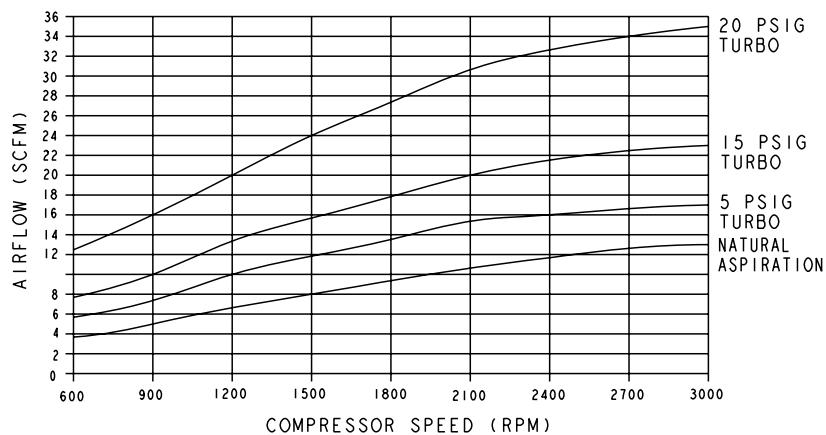
SCALE 1:2	(INCH) METRIC
DWN WRH 19991018 H/503186RE	DESIGN CONTROL RG

PART NUMBER RE62417
REV H

SHEET 2 OF 2



RE70693 JD90 2/2 E



HEAVY DUTY CONTINUS OPERATING MODEL 7805

KIT #RE70694
 MUST SELECT: 5201 AUX DRIVE
 USED IN CONJUNCTION WITH RE62802
 KIT, AUX DRIVE LH (BASE)
 AIR OUTPUT RATING OF 13 cfm

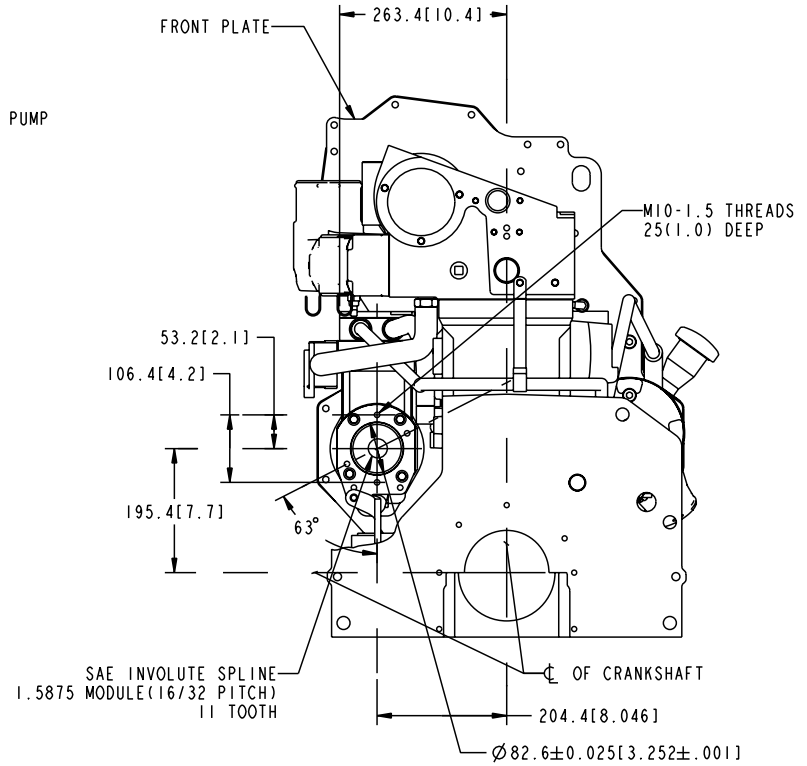
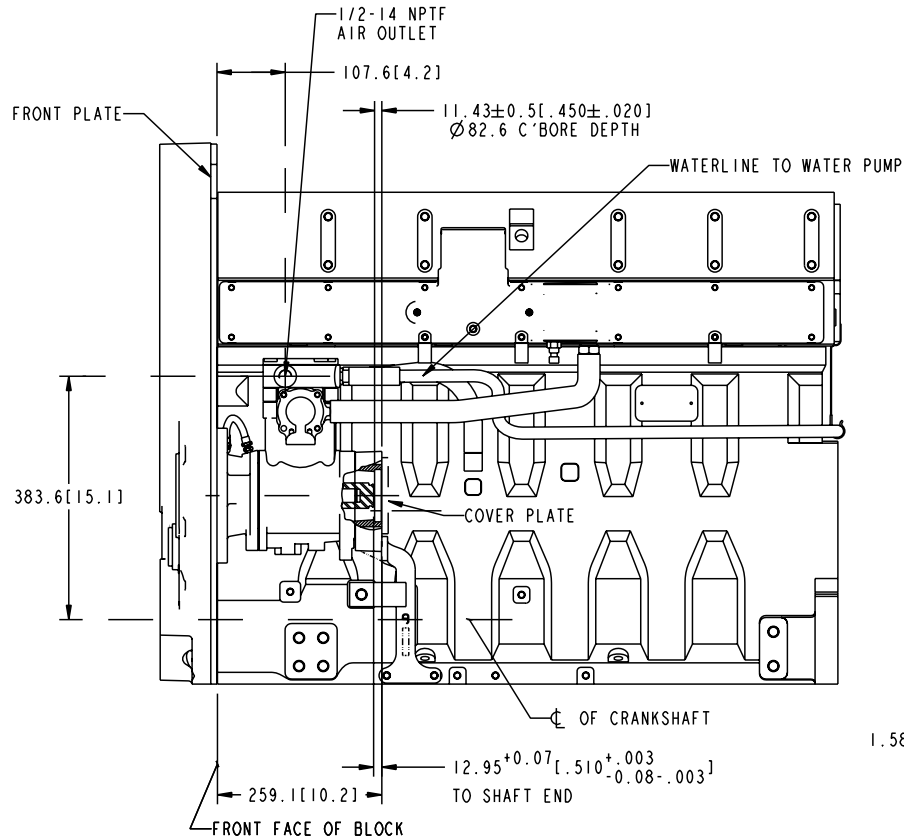
RE70693 JD90 2/2 E

9701

10181100	20051111	JJD	CFS	DRW HL	DRW REV
DECISION	DATE	BY	CHK	COMPLETE	5.2
DESCRIPTION: KIT FOR USE WITH HOLSET WITH "PIGGYBACK" PUMP DRIVE CAPABILITY PART NUMBERS RE65919 & RE500660				DEERE & COMPANY MOLINE, ILLINOIS 61265	
OPTION CODE	ENGINE MODEL	REF. P/N	MAT'L	VERSION	SCALE
9701	6081AF 6081TF 6081HF			JD90	NONE
		NAME		SCALE	UNIT
		KIT 6081 2 CYLINDER		1 INCH	METRIC
		AIR COMPRESSOR		NONE	DO
				RE70693	E

Pro/ENGINEER

RE500781 RG40 1/3 G



KIT #RE518293
MUST SELECT: 5201 AUX.
DRIVE W/ IDLER GEAR &
RG30241 BRACKET, AIR COMP. SUPPORT

HOLSET 13.2 OR 15 CFM AIR COMPRESSOR SHOWN
NOT INCLUDED IN INSTALLATION KIT-ORDER SEPARATELY
SEE 7800 OPTION CODE DRAWING FOR AIR COMPRESSOR PERFORMANCE CURVES

RE500781 RG40 1/3 G

PARTS IN KIT NOT NEEDED FOR THIS APPLICATION
ARE (2) R42312 FITTINGS, (1) R53811 HOSE,
(1) R130625 HOSE, (1) T27077 FITTINGS,
(1) R516121 COOLANT TUBE,
(1) R39503 FITTING, (1) R108661 HOSE,
(1) M45937 FITTING, (2) 42M7071 STUD AND (2) 14M7299 NUT.



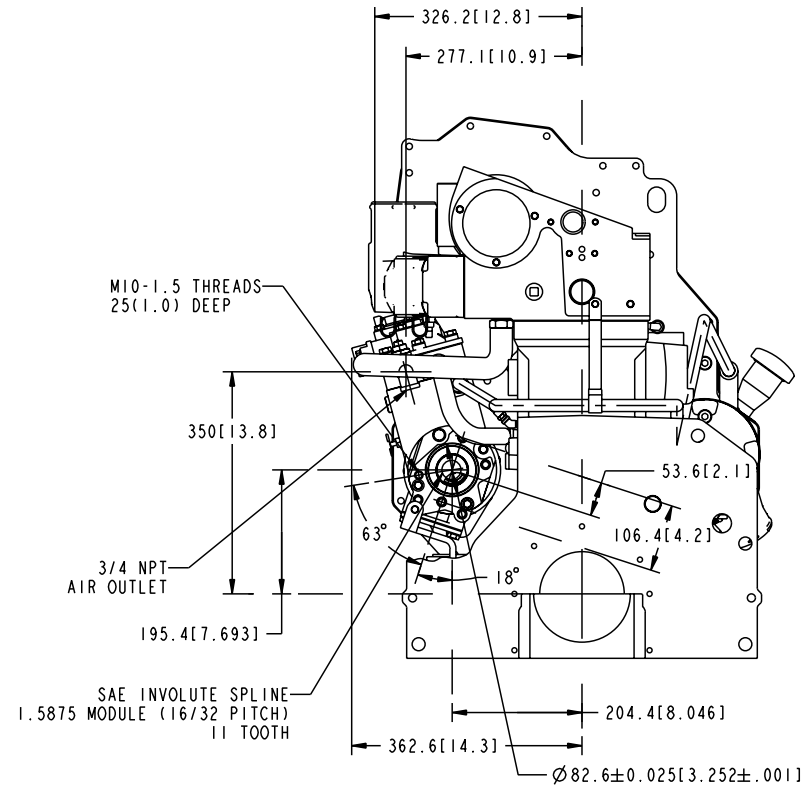
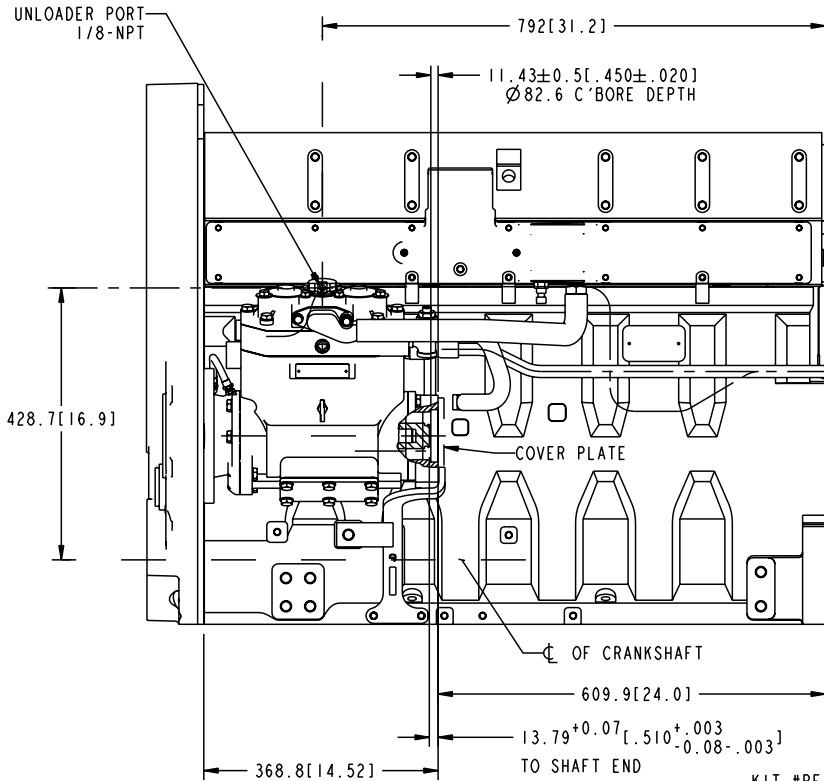
SCALE
DRAWING MAY NOT BE TO SCALE

505789RE	20020315	JGS	JGS	DECISION	DATE	BY	CHK	DRW RL	DRW REV
DESCRIPTION: POWERTECH 12.5L, KIT FOR HOLSET 13.2, 15, 34 CFM AIR COMPRESSOR								DEERE & COMPANY MOLINE, ILLINOIS 61265	
OPTION CODE	ENGINE MODEL	REF. P/N	MAT'L	VERSION	SCALE	INCH/METRIC	DESIGN CONTROL	RE500781 G	
				RG40	NONE	RG	JGS 20020315		
								KIT, AIR COMPRESSOR 13.2 & 15 CFM HOLSET	

SHEET 1 of 3

Pro/ENGINEER

RE500781 RG40 2/3 G



KIT #RE518293
 MUST SELECT: 5201 AUX.
 DRIVE W/ IDLER GEAR &
 RG30243 BRACKET, AIR COMP. SUPPORT

HOLSET 34 CFM AIR COMPRESSOR SHOWN
 NOT INCLUDED IN INSTALLATION KIT-ORDER SEPARATELY
 SEE 7800 OPTION CODE DRAWING FOR AIR COMPRESSOR PERFORMANCE CURVES

PARTS IN KIT NOT NEEDED FOR THIS APPLICATION
 ARE (2) R75562 FITTINGS, (2) R26375 O-RING,
 (1) R113490 HOSE, (1) R129607 HOSE,
 (1) R59873 FITTING, (1) R515142 COOLANT TUBE,
 (1) R39503 FITTING, (1) R108661 HOSE, (1) M45937 FITTING,
 (2) 42M7071 STUD AND (2) 14M7299 NUT.



DRAWING MAY NOT BE TO SCALE

505789RE	20020315	JGS	JGS	DECISION	DATE	BY	CHK	DRW	RL	DRW	REV
DESCRIPTION: POWERTECH 12.5L, KIT FOR HOLSET 13.2, 15, 34 CFM AIR COMPRESSOR								DEERE & COMPANY MOLINE, ILLINOIS 61265			
OPTION CODE	ENGINE MODEL	REF. P/W	MAT'L	VERSION	SCALE	WONE	LINCH	METRIC	DESIGN	CONTROL	
				RG40					JGS 20020315	RG	
KIT, AIR COMPRESSOR 34 CFM HOLSET								RE500781 G			

SHEET 2 of 3

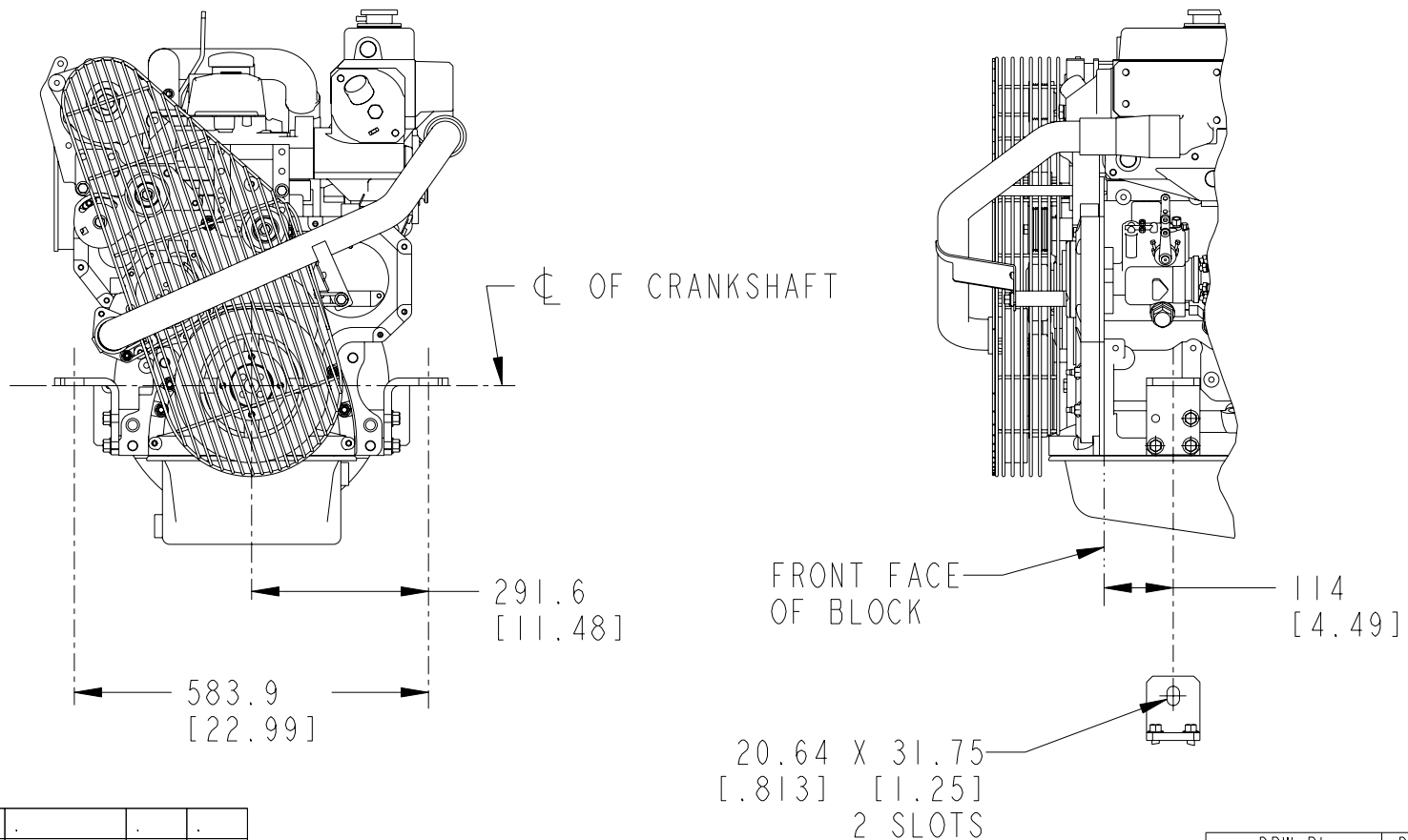
Pro/ENGINEER

R501481

VERSION RG40

SH 1/1

REV A



502009RE	05JUN98	TWS	CFS	VERSION
DECISION	DATE	BY	CHK	RG40

DRW RL	DRW REV
	1.4

DESCRIPTION: FRONT MOUNTS FOR S350 MARINE ENGINE

DEERE & COMPANY
MOLINE, ILLINOIS 61265

OPTION CODE	ENGINE MODEL	REF. P/N	MATL.
9701	6068DFM 4045DFM	R501454	STRUCTURAL STEEL
	6068TFM 4045TFM		
		NAME FRONT MOUNTING BRACKETS	

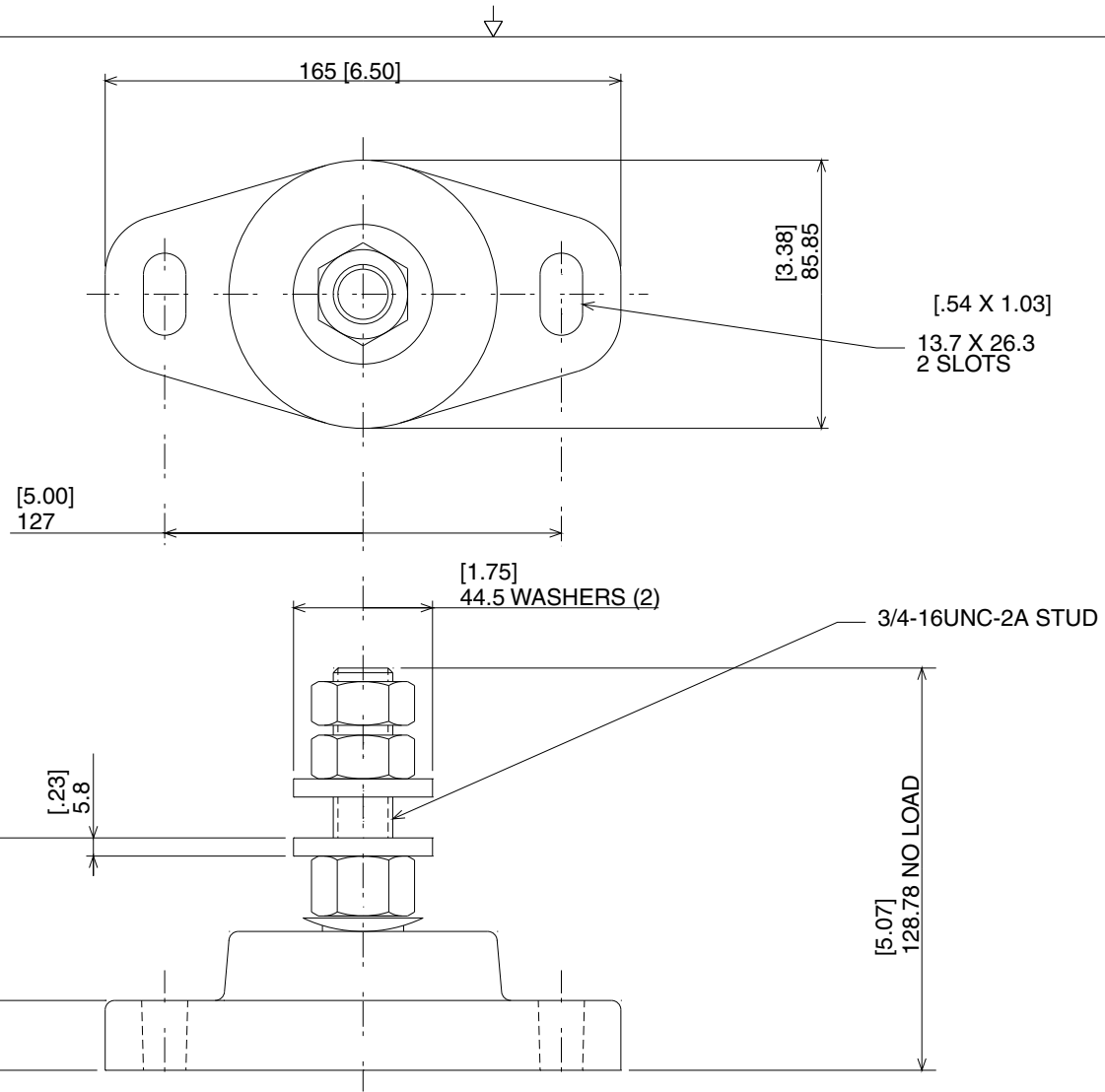
	SCALE NONE	[INCH] METRIC
DWN TWS 05JUN98	DESIGN CONTROL RG	

R501481	A
---------	---

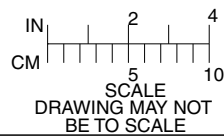
Pro/ENGINEER

9701

R115194



98656RE	11NOV92	KJK	JA
97993RE	29MAY92	.	.
97650RE	02MAR92	.	.
DECISION	DATE	BY	CHK



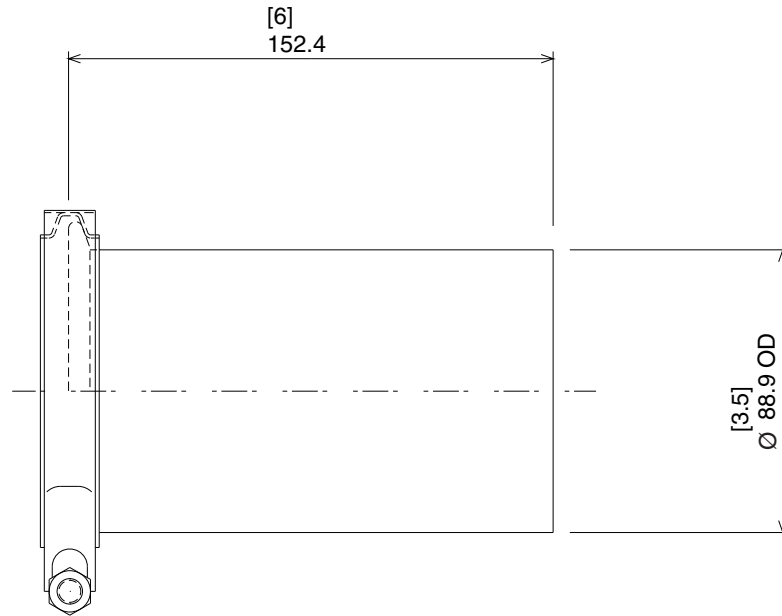
OPTION CODE	ENGINE MODEL		
9701	4039DFM	4045TFM	6068DFM
.	6068TFM	.	.
.	.	.	.

DESCRIPTION: ENGINE MOUNTING ISOLATOR FOR MARINE (EXP:R115194B)
NAME VIBRATION ISOLATOR

DEERE & COMPANY MOLINE, ILLINOIS 61265	
SCALE 1:1	(INCH) METRIC
DWN DJS 6NOV91	DESIGN CONTROL RE
R115194	

1076

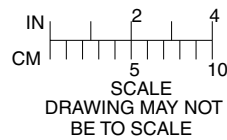
R122387



9701

NOTE:
KIT INCLUDES EXHAUST ADAPTER AND CLAMP

202389RE	27JAN94	MLM	MSG
DECISION	DATE	BY	CHK



ADAPTER MATERIAL: 14 GA. STEEL

DESCRIPTION:
EXHAUST ADAPTOR KIT RE58443
(WAS:R122387A)

NAME
MARINE EXHAUST ADAPTOR

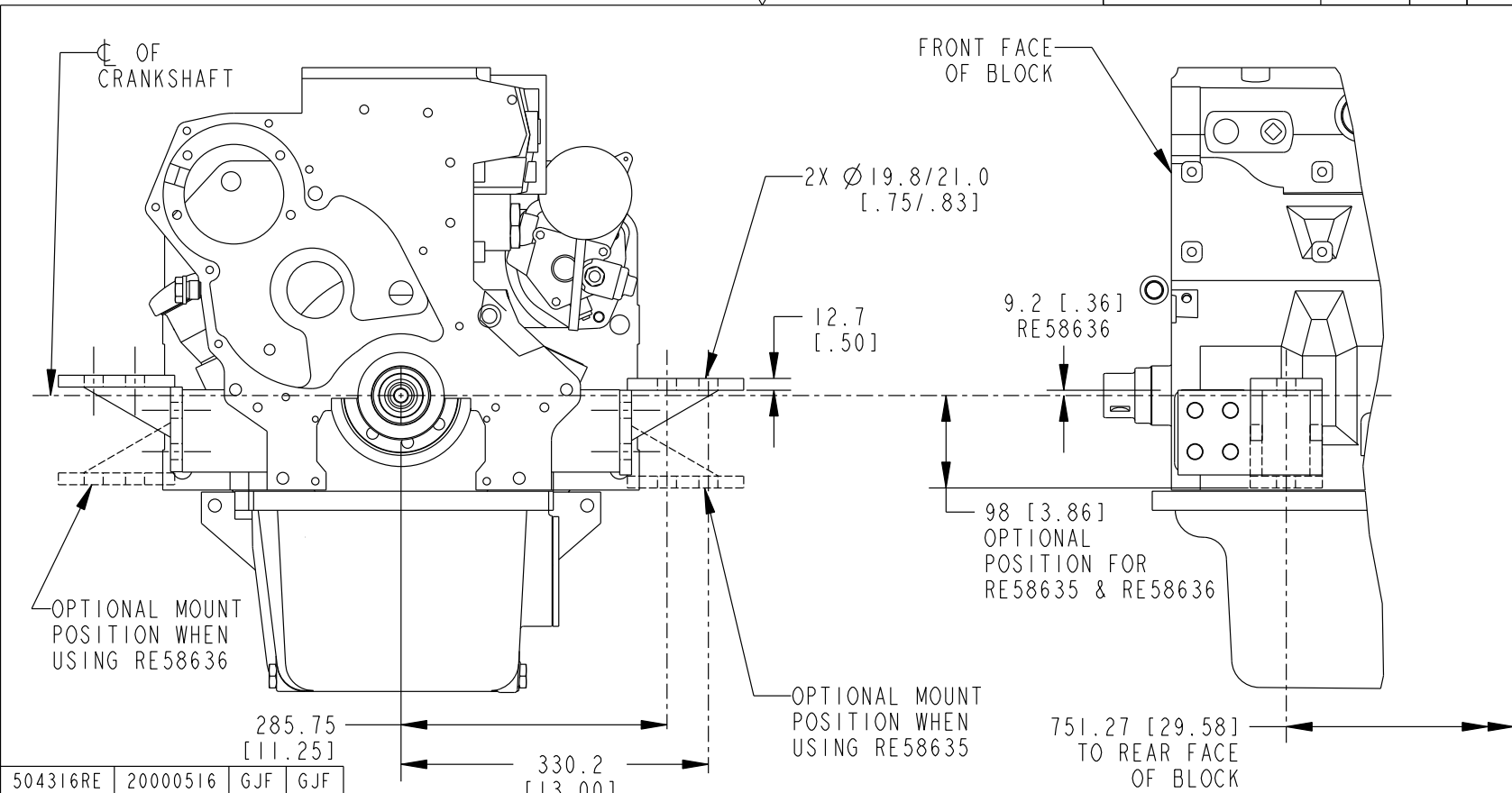
TERMINOLOGY CODE	REGO
DESIGN CONTROL	VERSION NO
RE	

DEERE & COMPANY
MOLINE, ILLINOIS 61265

SCALE	[INCH] METRIC
DWN	DESIGN CONTROL
DJS 21OCT93	RE

R122387

RE57882 VERSION RG40 SH 1/1 REV C



504316RE	20000516	GJF	GJF
203134RE	05MAR94	TJF	TJF
202287RE	06DEC93	.	.
DECISION	DATE	BY	CHK

NOTE: RE57814 FRONT SUPPORT KIT CONSISTS OF RE58635 RH FRONT SUPPORT AND RE58636 LH FRONT SUPPORT

DRW RL	DRW REV

DESCRIPTION: FRONT ENGINE SUPPORT MOUNTS
FRONT SUPPORT KIT RE57814

DEERE & COMPANY
MOLINE, ILLINOIS 61265

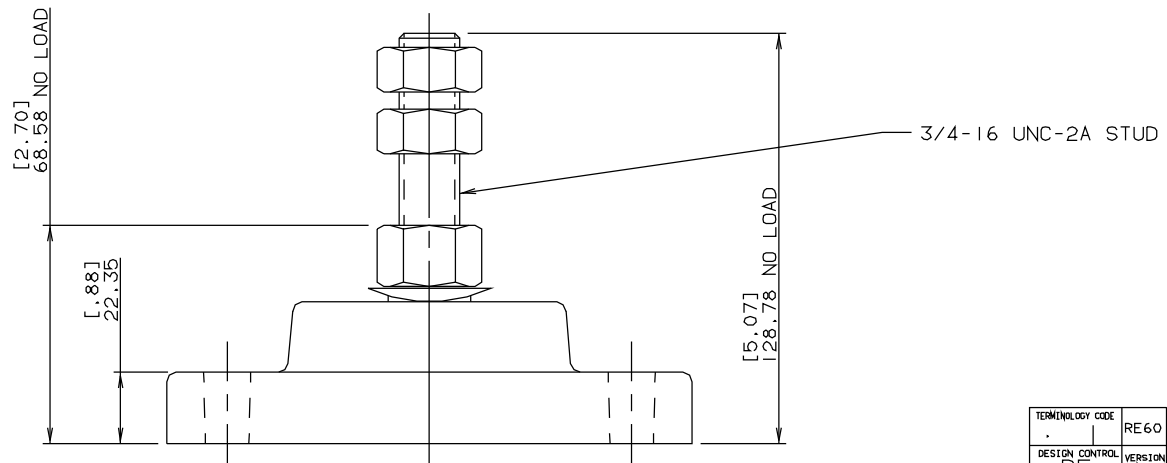
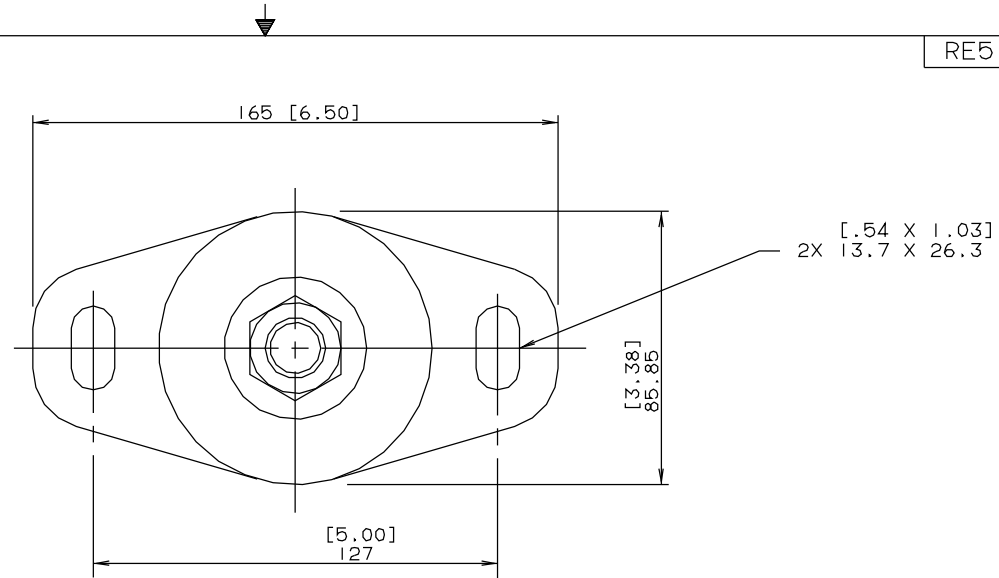
OPTION CODE	ENGINE MODEL	REF. P/N	MAT'L	VERSION
9701	6081AFM01 6076AFM30	NAME		RG40
		DRAWING, ENGINE MOUNT OPTION		

	SCALE NONE	[INCH] METRIC
DWN	KMU 20000516	DESIGN CONTROL
RE57882		C

9701

Pro/ENGINEER

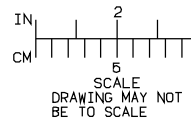
RE51887



98044RE	18MAY92	CRZ	JA
DECISION	DATE	BY	CHK

NOTE:
RG20555 VIBRATION ISOLATOR KIT
CONSISTS OF (4) RE48820 ISOLATORS

TERMINOLOGY CODE	RE60
DESIGN CONTROL	VERSION NO
RE	



DESCRIPTION:
ENGINE MOUNTING VIBRATION ISOLATOR
VIBRATION ISOLATOR KIT RG20555
(RE51887B)

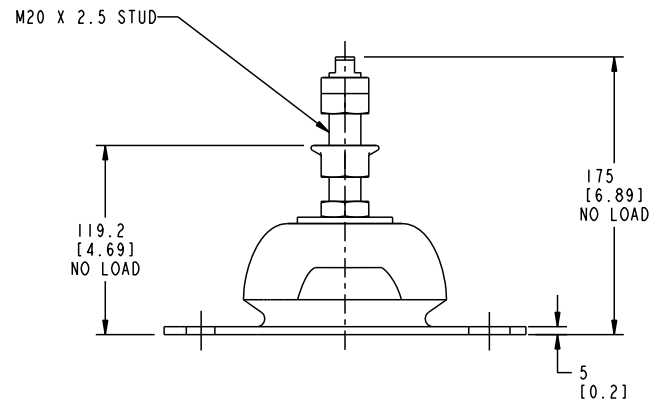
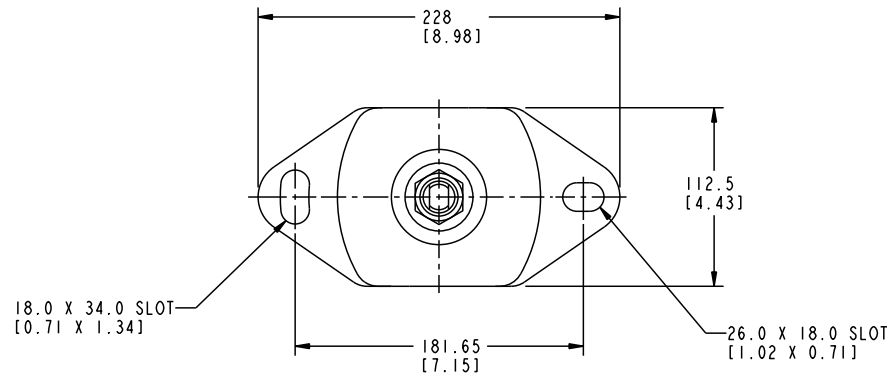
NAME
VIBRATION ISOLATOR
6076 ENGINE

DEERE & COMPANY
MOLINE, ILLINOIS 61265

SCALE	[INCH]
1:1	METRIC
DWN TVT-33059	DESIGN CONTROL
B/07921	RE

RE51887

R524552 JD90 1/1 A



R524552 JD90 1/1 A

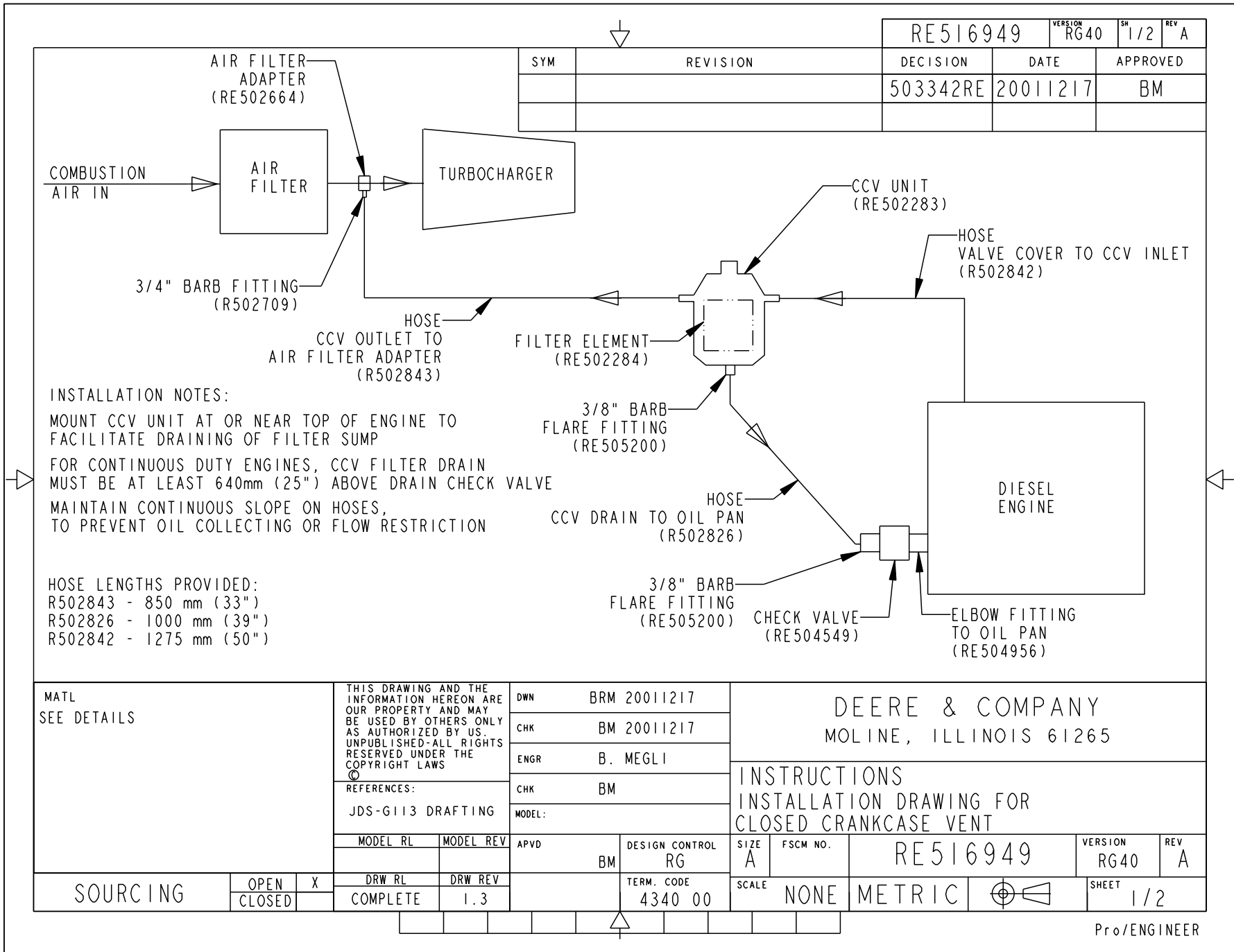
9701

10215900	2006-01-24	JAB	JAB	DRW RL		DRW REV	
DECISION	DATE	BY	CHK	CHANGING	1.0		
DESCRIPTION: ENGINE MOUNTING ISOLATOR FOR 6125AFM ENGINES						DEERE & COMPANY MOLINE, ILLINOIS 61265	
OPTION CODE	ENGINE MODEL	REF. P/N	MAT'L	VERSION	SCALE	1 (INCH) METRIC	
9701	6125AFM			JD90	NONE		
				NAME	DRAWING, ENGINE MOUNTING KIT OPTION		
				DATE	JAB 2006-01-24	SUBMITTING UNIT	DO
					R524552	A	

Pro/ENGINEER

MARINE ENGINE ACCESSORIES

PowerTech Marine Engines



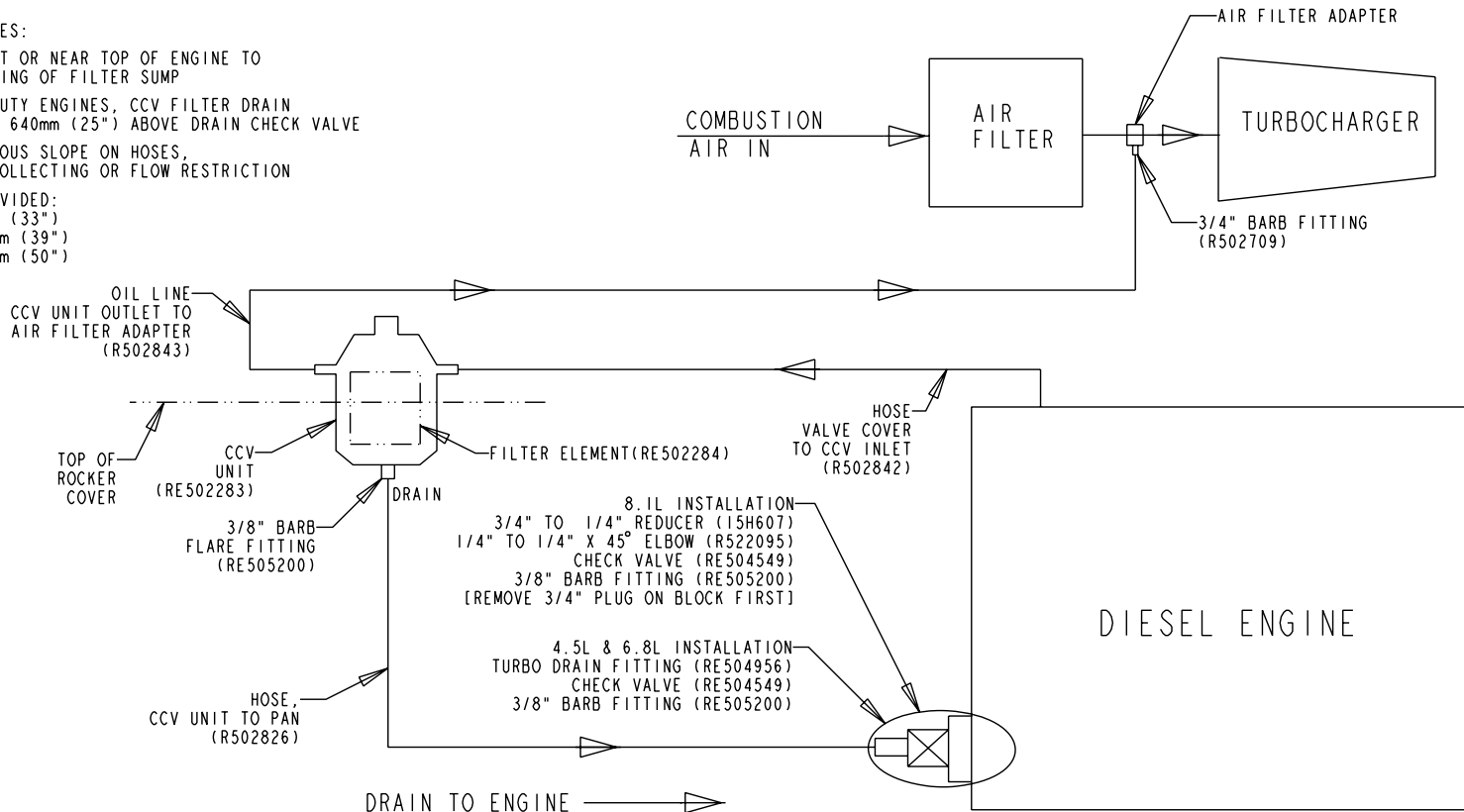
MATL SEE DETAILS	THIS DRAWING AND THE INFORMATION HEREON ARE OUR PROPERTY AND MAY BE USED BY OTHERS ONLY AS AUTHORIZED BY US. UNPUBLISHED-ALL RIGHTS RESERVED UNDER THE COPYRIGHT LAWS ©	DWN BRM 20011217	DEERE & COMPANY MOLINE, ILLINOIS 61265
	REFERENCES: JDS-G113 DRAFTING	CHK BM 20011217	
	MODEL RL MODEL REV	ENGR B. MEGLI	
	DRW RL DRW REV	CHK BM	
SOURCING	APVD BM	DESIGN CONTROL RG	INSTRUCTIONS INSTALLATION DRAWING FOR CLOSED CRANKCASE VENT
	COMPLETE	1.3	MODEL
	OPEN	X	SIZE A
	CLOSED		FSCM NO.
			RE516949
			VERSION RG40
			REV A
			TERM. CODE 4340 00
			SCALE NONE
			METRIC
			SHEET 1/2

Pro/ENGINEER

PART NUMBER	RE532963	VERSION	JD90	SHEET	1/2	REV	A
CHANGE DOC	102779D0	DATE(YYYY-MM-DD)	2006-10-04	APPROVED	MICHAEL DEVORE		

INSTALLATION NOTES:

MOUNT CCV UNIT AT OR NEAR TOP OF ENGINE TO FACILITATE DRAINING OF FILTER SUMP
 FOR CONTINUOUS DUTY ENGINES, CCV FILTER DRAIN MUST BE AT LEAST 640mm (25") ABOVE DRAIN CHECK VALVE
 MAINTAIN CONTINUOUS SLOPE ON HOSES, TO PREVENT OIL COLLECTING OR FLOW RESTRICTION
 HOSE LENGTHS PROVIDED:
 R502843 - 850 mm (33")
 R502826 - 1000 mm (39")
 R502842 - 1275 mm (50")

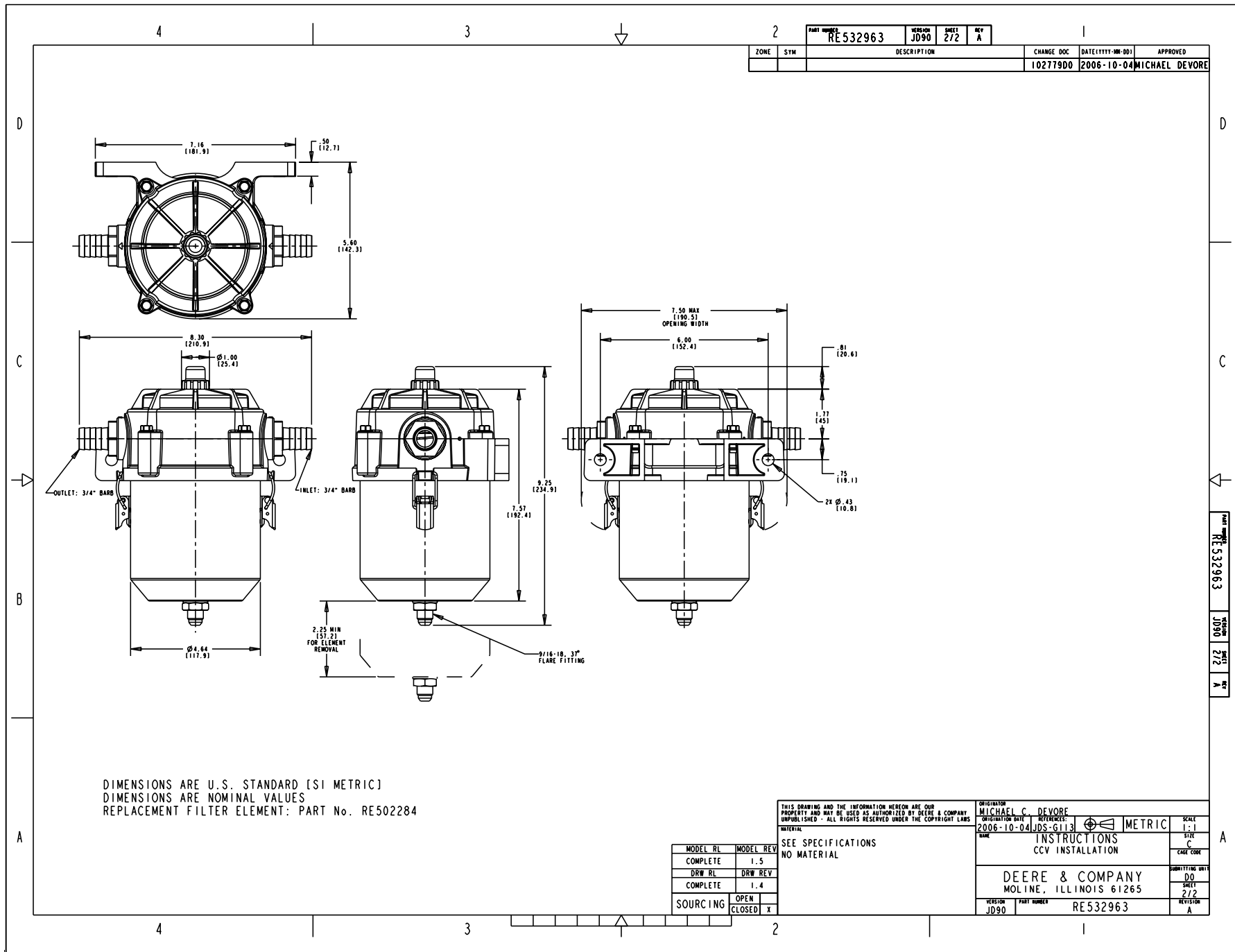


THIS DRAWING AND THE INFORMATION HEREON ARE OUR PROPERTY AND MAY BE USED AS AUTHORIZED BY DEERE & COMPANY UNPUBLISHED - ALL RIGHTS RESERVED UNDER THE COPYRIGHT LAWS

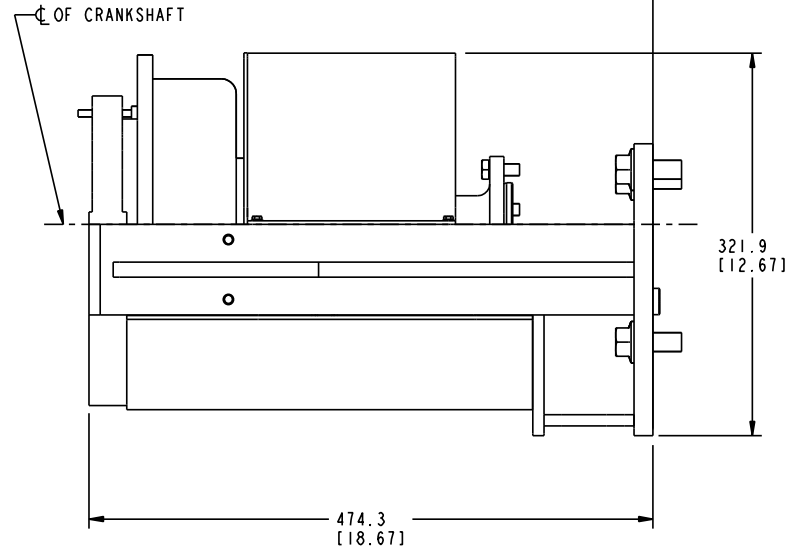
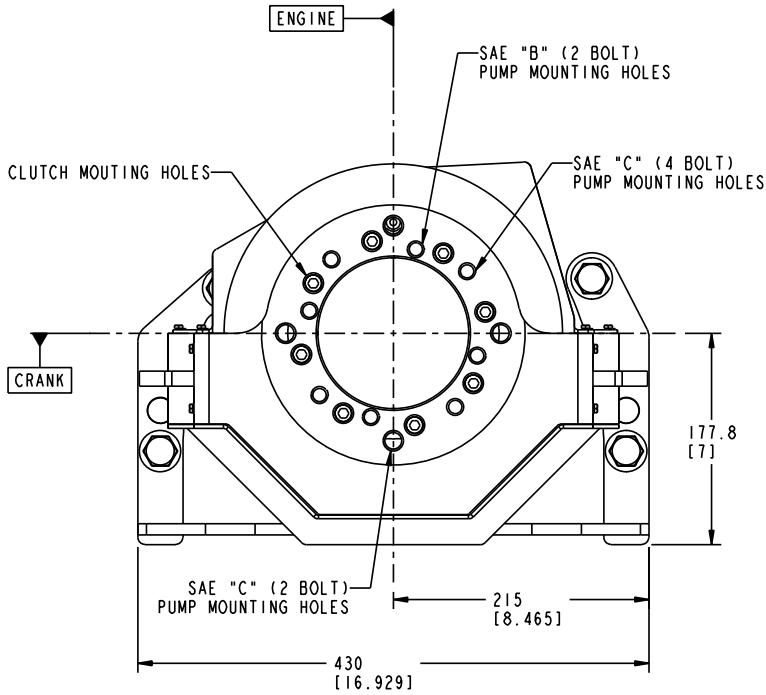
MATERIAL
 SEE SPECIFICATIONS
 NO MATERIAL

MODEL RL	MODEL REV
COMPLETE	1.5
DRW RL	DRW REV
COMPLETE	1.4
SOURCING	OPEN
	CLOSED

ORIGINATOR	MICHAEL C. DEVORE			SCALE	1:1
ORIGINATION DATE	2006-10-04	REFERENCES:	JDS-G113	SIZE	A
NAME	INSTRUCTIONS CCV INSTALLATION			CAGE CODE	
DEERE & COMPANY MOLINE, ILLINOIS 61265				SUBMITTING UNIT	D0
VERSION	JD90	PART NUMBER	RE532963	SHEET	1/2
				REVISION	A



R522963 JD90 I/I A



R522963 JD90 I/I A

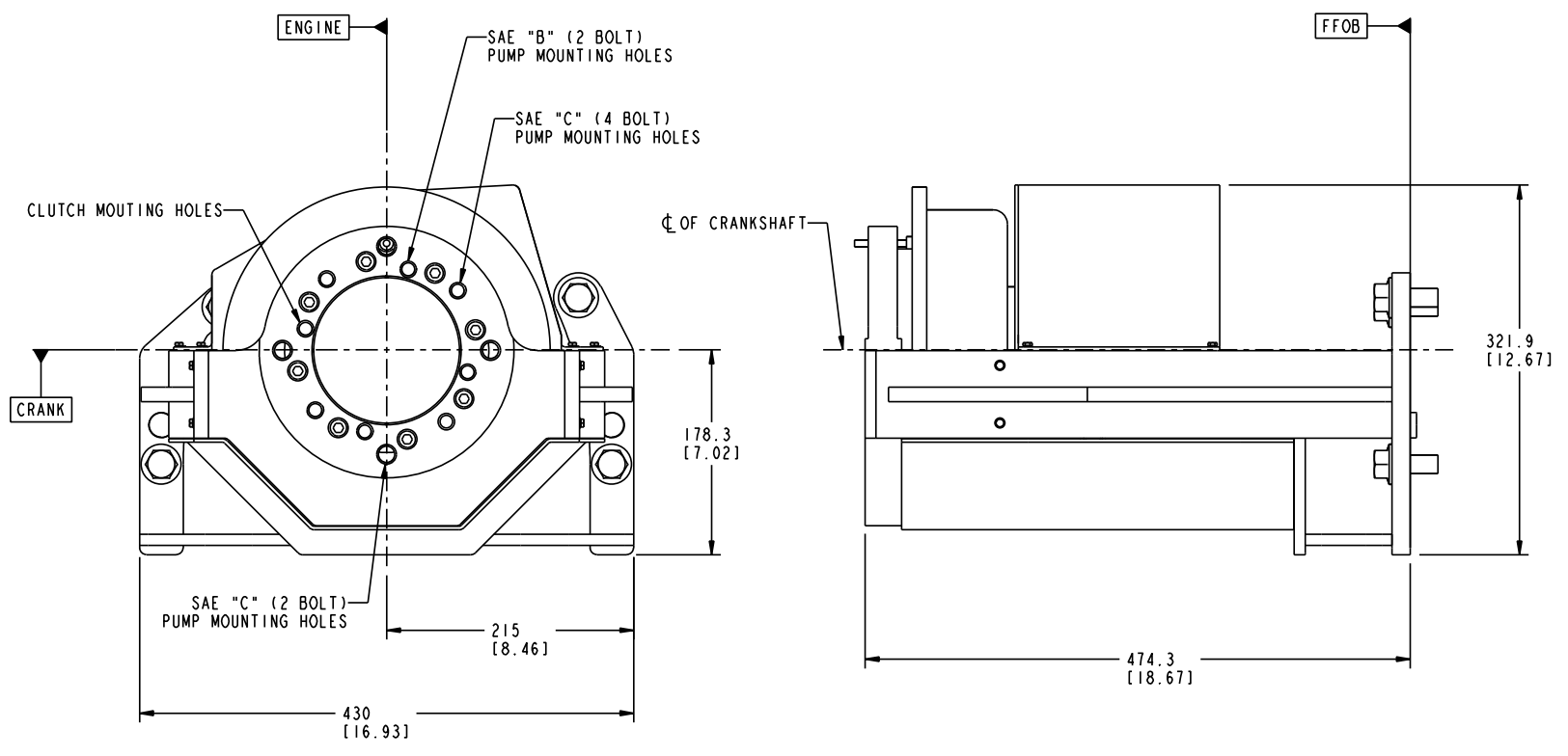
NOTES:
 1. FOR USE WITH PITTS H36D400 CLUTCH OR EQUIVALENT
 2. REFERENCE KIT PART NUMBER IS RE523263

9701

***	20050523	JLE	JLE							DRW RL	DRW REV
DECISION	DATE	BY	CHK								1.2
DESCRIPTION: DRIVE PTO										DEERE & COMPANY MOLINE, ILLINOIS 61265	
OPTION CODE	ENGINE MODEL	REF. P/N	MAT'L	VERSION	SCALE	UNIT	INCH	METRIC	DATE	UNIT	
9701	4045DFM	4045TFM		JD90	NONE	DO			JLE 2005-05-23	DO	
DRAWING, DRIVE PTO OPTION										R522963	A

Pro/ENGINEER

R522964 JD90 I/I A



NOTES:
 1. FOR USE WITH PITTS H36D400 CLUTCH OR EQUIVALENT
 2. REFERENCE KIT PART NUMBER IS R523264

9701

R522964 JD90 I/I A

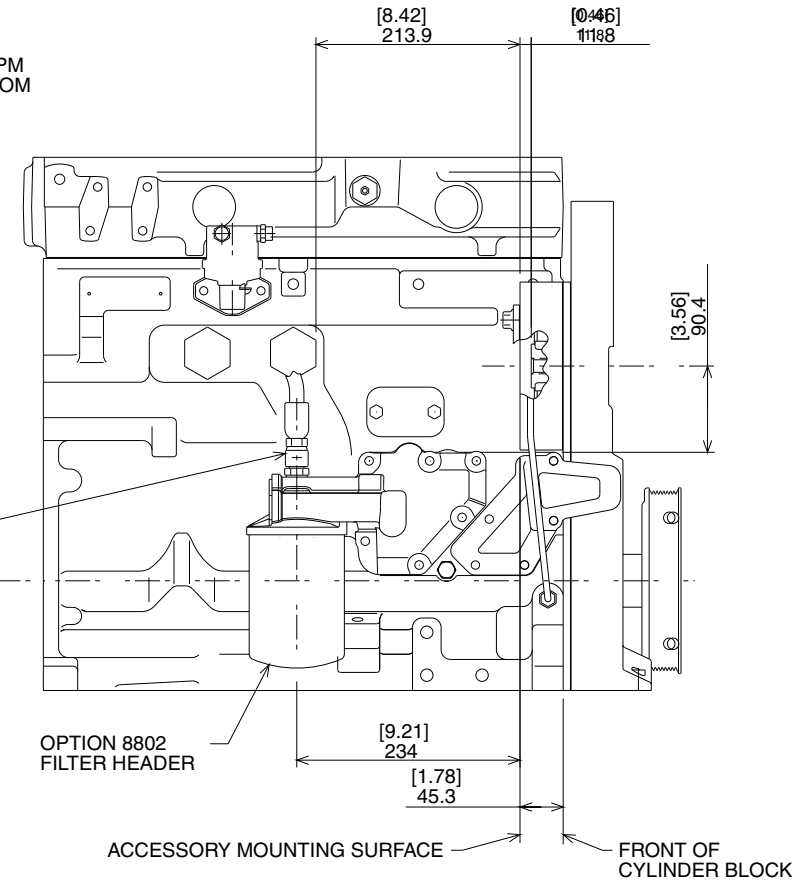
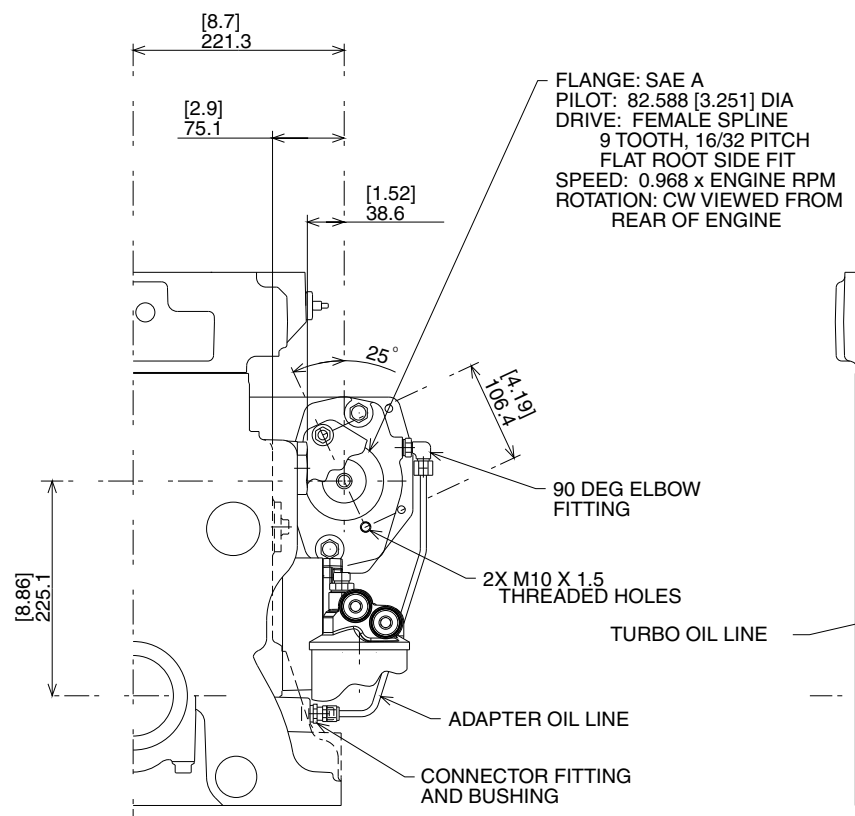
***	20050523	JLE	JLE			DRW RL	DRW REV
DECISION	DATE	BY	CHK				1.2
DESCRIPTION: DRIVE PTO						DEERE & COMPANY MOLINE, ILLINOIS 61265	
OPTION CODE	ENGINE MODEL	REF. P/W	MAT'L	VERSION	SCALE	UNIT	INCH/METRIC
9701	6068TFM			JD90	NONE	DO	DO
DRAWING, DRIVE PTO OPTION						R522964	A

Pro/ENGINEER

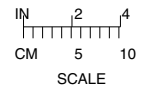
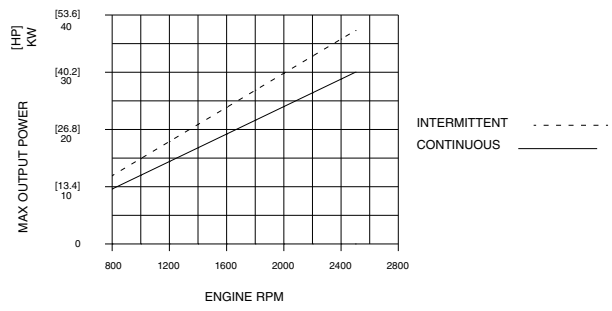
GEAR AUXILIARY DRIVE

PowerTech 4.5 L, 6.8 L Engine

PART NUMBER: R500627 REVISION: A



MAXIMUM AUXILIARY DRIVE POWER AT SPECIFIED ENGINE SPEED



AUXILIARY DRIVE ADAPTER SHOWN ON 4045T ENGINE

DESCRIPTION: POWERTECH 350 AUXILIARY DRIVE ADAPTER KIT RE500884 SAE A' FLANGE HYDRAULIC PUMP MAXIMUM ACCESSORY WEIGHT LIMIT WITHOUT REAR SUPPORT 9.4kg (20.7lb)				DEERE & COMPANY MOLINE, ILLINOIS 61265	
OPTION CODE	ENGINE MODEL		REF: FACTORY OPTION 5202	SCALE	NONE
9701	4045DF	6068DF	NAME	INCH	METRIC
	4045HF	6068HF	KIT, AUXILIARY DRIVE ADAPTER	DESIGN CONTROL	RG
	4045TF	6068TF		REVISION	R500627
50083FRE 10AUL87LDS			A		
DECISION	DATE	BY	CHK		

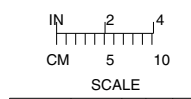
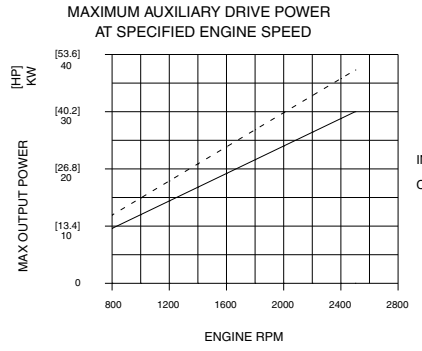
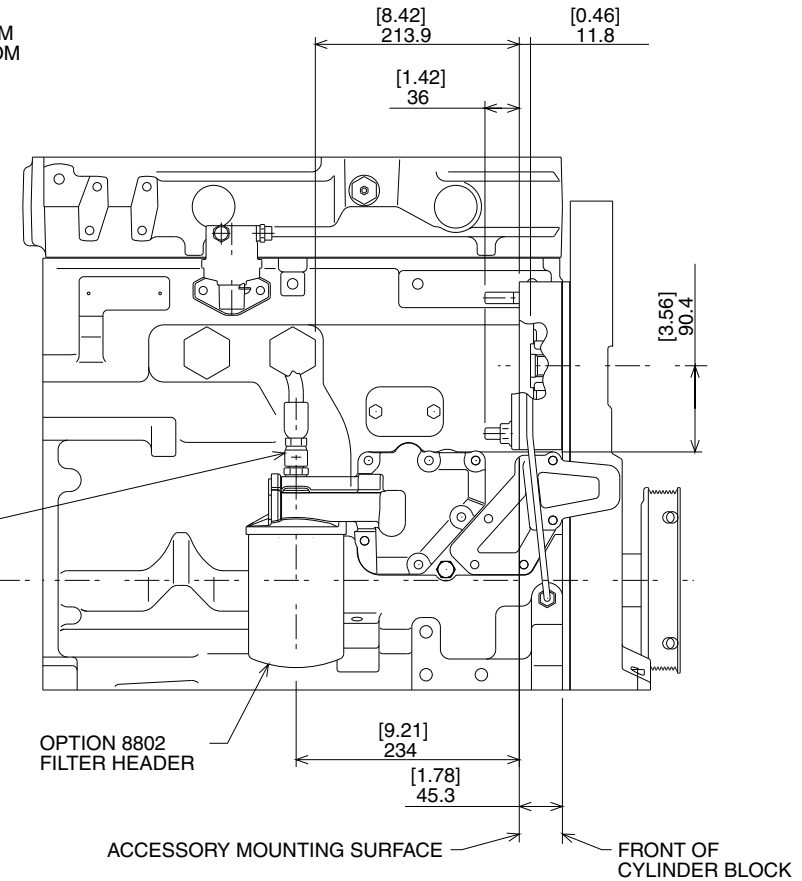
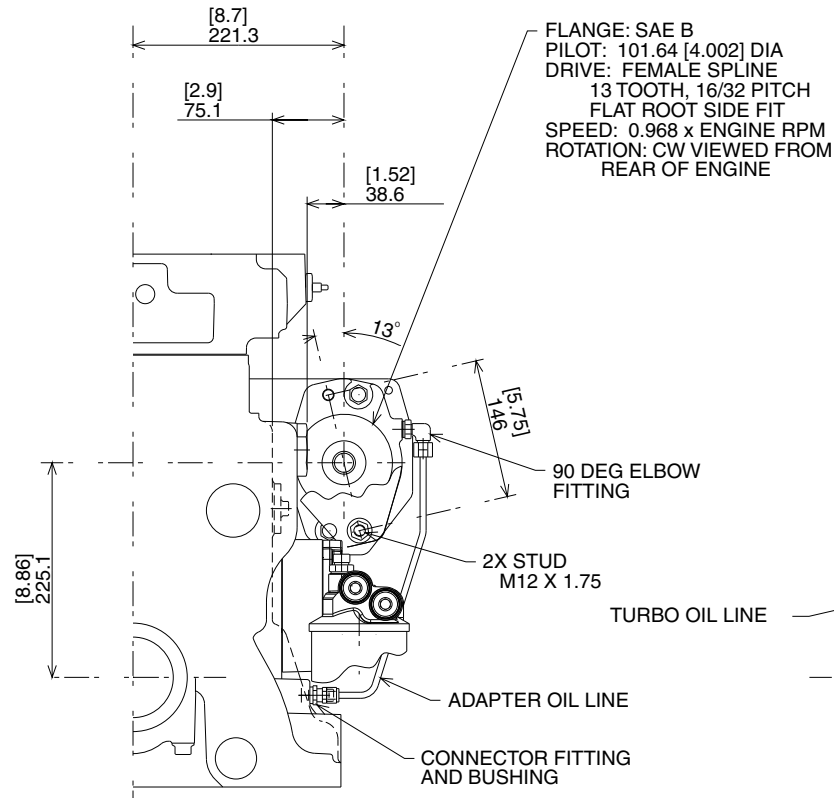
9701

TX-CD

GEAR AUXILIARY DRIVE

PowerTech 4.5 L, 6.8 L Engine

PART NUMBER: R500626 REVISION: A



AUXILIARY DRIVE ADAPTER SHOWN ON 4045T ENGINE

DESCRIPTION: POWERTECH 350 AUXILIARY DRIVE ADAPTER KIT R500883 SAE 'B' FLANGE HYDRAULIC PUMP MAXIMUM ACCESSORY WEIGHT LIMIT WITHOUT REAR SUPPORT 9.4kg [20.7lb]				DEERE & COMPANY MOLINE, ILLINOIS 61265	
OPTION CODE	ENGINE MODEL		REF: FACTORY OPTION 5201	SCALE	NONE
9701	4045DF	6068DF	NAME	INCH	METRIC
	4045HF	6068HF	KIT, AUXILIARY DRIVE ADAPTER		
	4045TF	6068TF	DESIGN CONTROL	RIG	
DECISION			DATE	BY	CHK
50083FRE			10JUL97	LDS	
PART NUMBER			REVISION		
R500626			A		

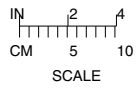
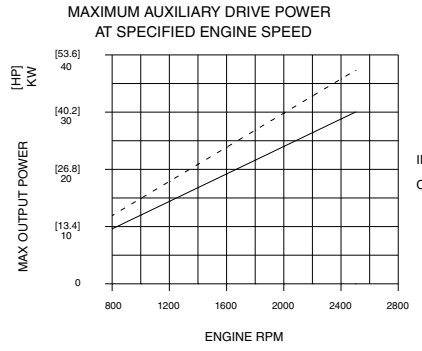
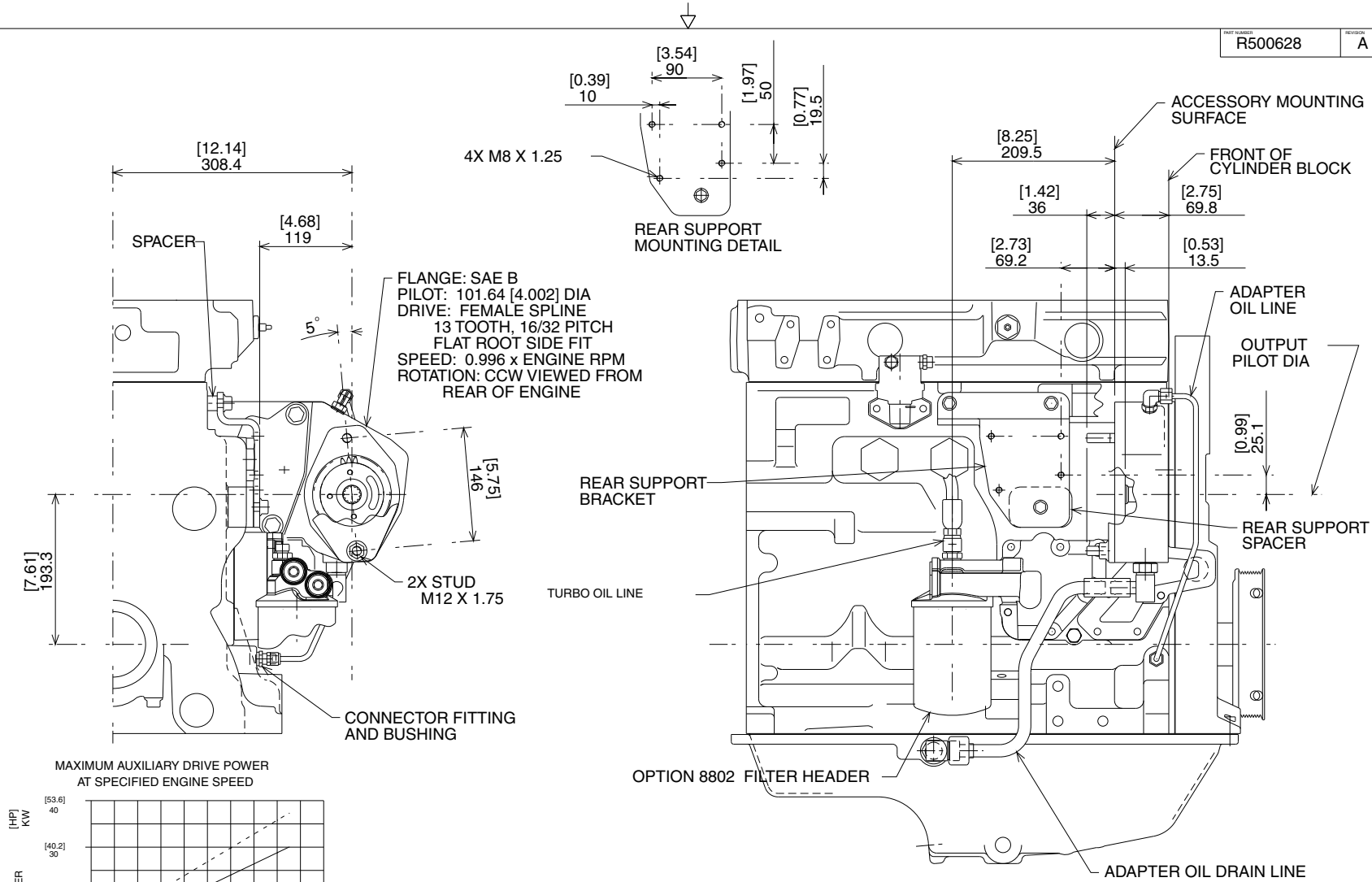
9701

TX-CD

GEAR AUXILIARY DRIVE

PowerTech 4.5 L, 6.8 L Engine

PART NUMBER: R500628 REVISION: A



AUXILIARY DRIVE OFFSET ADAPTER SHOWN ON 4045T ENGINE

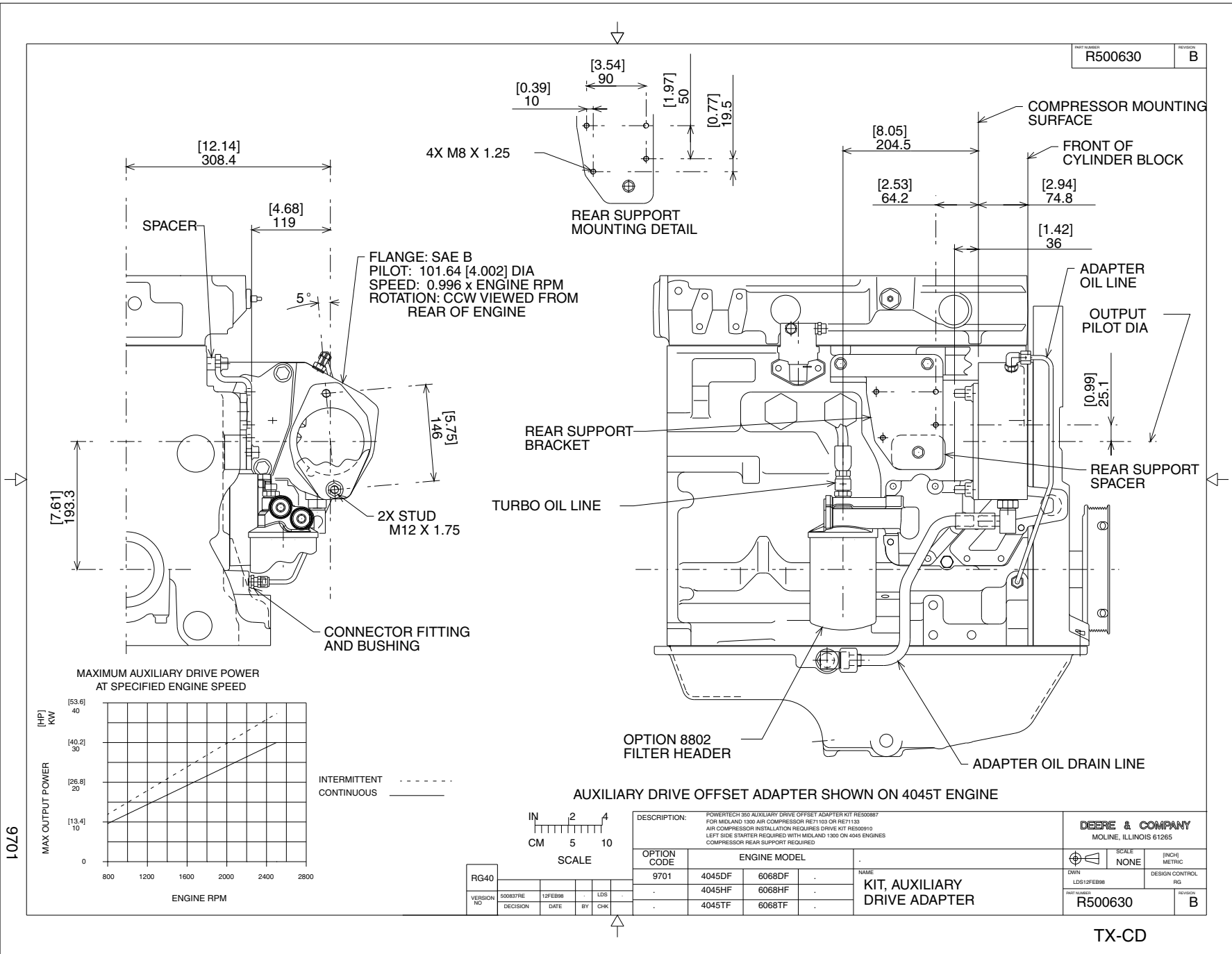
DESCRIPTION: POWERTECH 350 OFFSET AUXILIARY DRIVE ADAPTER KIT RE500885 FOR SAE B FLANGE HYDRAULIC PUMP MAXIMUM ACCESSORY WEIGHT LIMIT WITHOUT REAR SUPPORT 4.9kg [10.8lb]				DEERE & COMPANY MOLINE, ILLINOIS 61265	
OPTION CODE	ENGINE MODEL		REF: FACTORY OPTION 5203	SCALE: NONE	INCH/METRIC
9701	4045DF	6068DF	KIT, AUXILIARY DRIVE ADAPTER	DESIGN CONTROL	REV
	4045HF	6068HF			
	4045TF	6068TF			
500837RE 10JUL97			LDS		
DECISION			DATE BY CHK		
R500628			A		

9701

TX-CD

GEAR AUXILIARY DRIVE

PowerTech 4.5 L, 6.8 L Engine

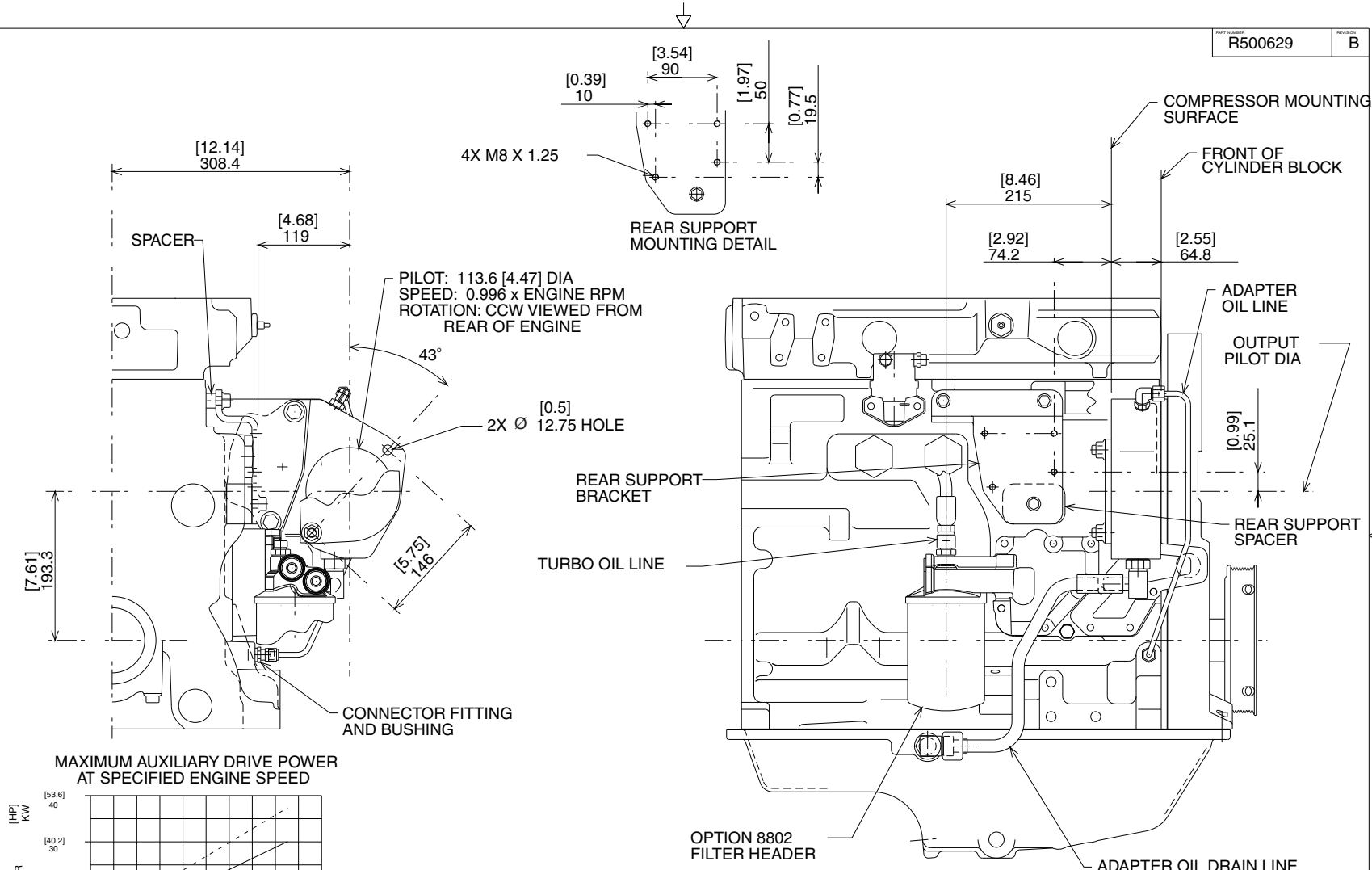


9701

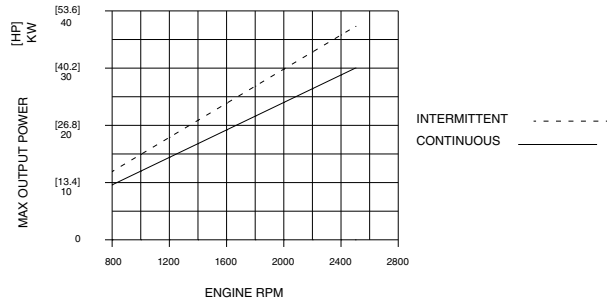
GEAR AUXILIARY DRIVE

PowerTech 4.5 L, 6.8 L Engine

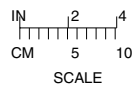
PART NUMBER: R500629 REVISION: B



MAXIMUM AUXILIARY DRIVE POWER AT SPECIFIED ENGINE SPEED



AUXILIARY DRIVE OFFSET ADAPTER SHOWN ON 4045T ENGINE



DESCRIPTION: POWERTECH 360 AUXILIARY DRIVE OFFSET ADAPTER KIT RES00888 FOR BENDIX 550 AIR COMPRESSOR # 55A-5001085 AIR COMPRESSOR INSTALLATION REQUIRES DRIVE KIT RES00909 LEFT SIDE STARTER REQUIRED WITH BENDIX 550 ON 4045 ENGINES COMPRESSOR REAR SUPPORT REQUIRED		DEERE & COMPANY MOLINE, ILLINOIS 61265	
OPTION CODE	ENGINE MODEL	SCALE	INCH/METRIC
9701	4045DF 6068DF	NONE	INCH
	4045HF 6068HF		METRIC
	4045TF 6068TF		
KIT, AUXILIARY DRIVE ADAPTER		DESIGN CONTROL	RG
		PART NUMBER	REVISION
		R500629	B

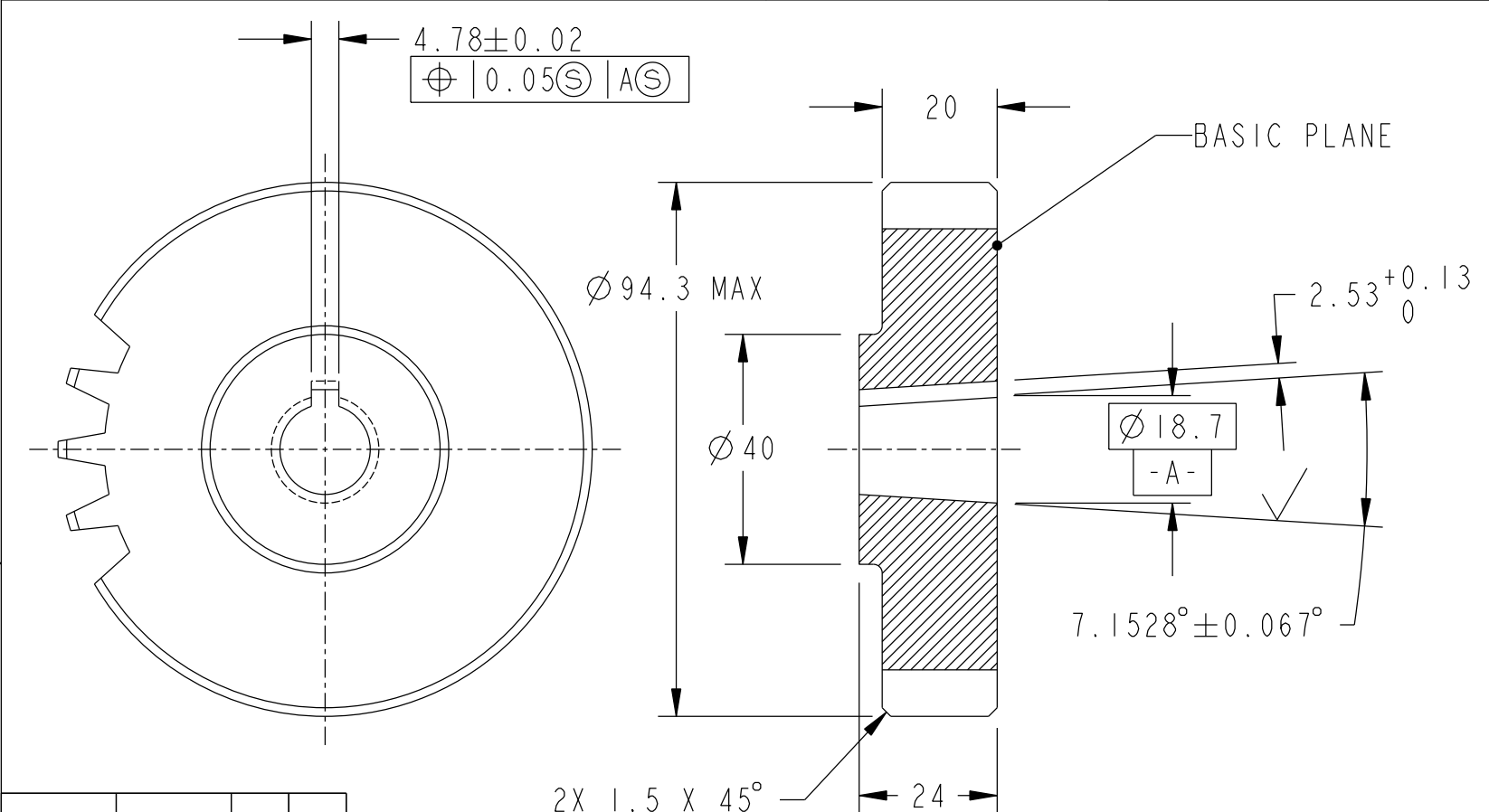
TX-CD

9701

GEAR AUXILIARY DRIVE

PowerTech 4.5 L, 6.8 L Engine

R503969 VERSION RG40 SH 1/1 REV A



504196RE	20000405	SLD	
DECISION	DATE	BY	CHK

DRW RL	DRW REV
	1.2

DESCRIPTION: POWERTECH 350 AUXILIARY DRIVE GEAR
USE WITH HYDRAULIC PUMP DIRECT MOUNT W/O AUX DRIVE ADAPTER

DEERE & COMPANY
MOLINE, ILLINOIS 61265

OPTION CODE	ENGINE MODEL	REF. P/N	MAT'L	VERSION
9901	4045DF 6068DF	T173311		RG40
	4045HF 6068HF	NAME GEAR, AUXILIARY DRIVE		
	4045TF 6068TF			

	SCALE NONE	[INCH] METRIC
DWN SLD 20000405	DESIGN CONTROL RG	
R503969		A

1066

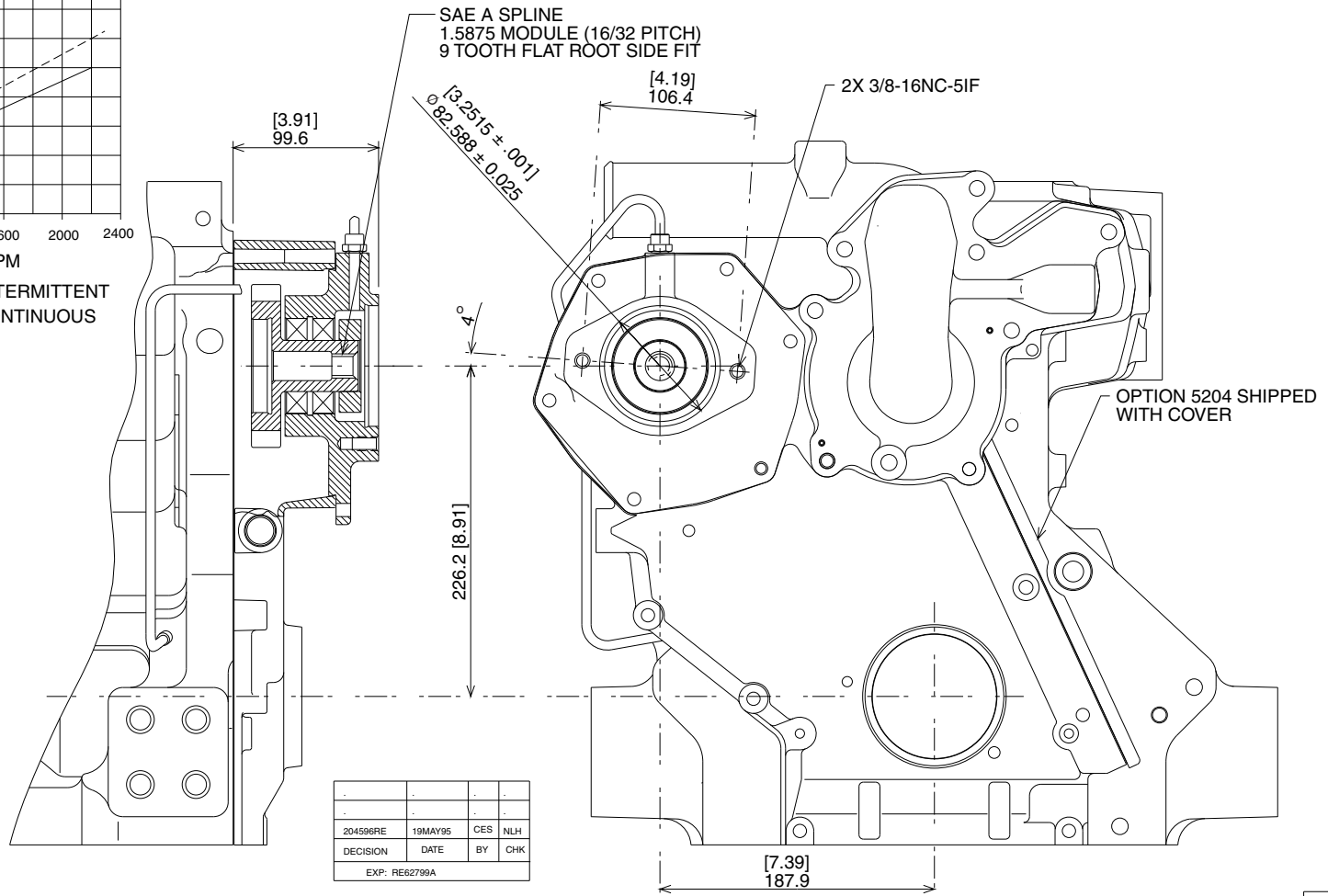
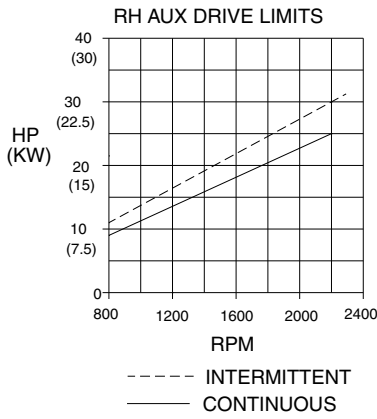


Pro/ENGINEER

GEAR AUXILIARY DRIVE

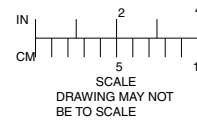
PowerTech 8.1 L Engine

RE62799



SPEED
.96 X CRANKSPEED
COUNTERCLOCKWISE ROTATION
(VIEWED FROM REAR)

KIT # RE62796
SAE "A" FLANGE COVER PLATE
INCLUDED IN KIT (NOT SHOWN)
MUST SELECT:
5204 AUX DRIVE
2398 NO FAN DRIVE



DESCRIPTION:
GEAR DRIVEN R.H. AUXILIARY
DRIVE WITH 9 TOOTH SPLINE

NAME
DRAWING, INSTALLATION
(RH AUXILIARY DRIVE)

DEERE & COMPANY
MOLINE, ILLINOIS 61265

SCALE 1:2 [INCH] METRIC
DWN DAK-RE049 DESIGN CONTROL RE

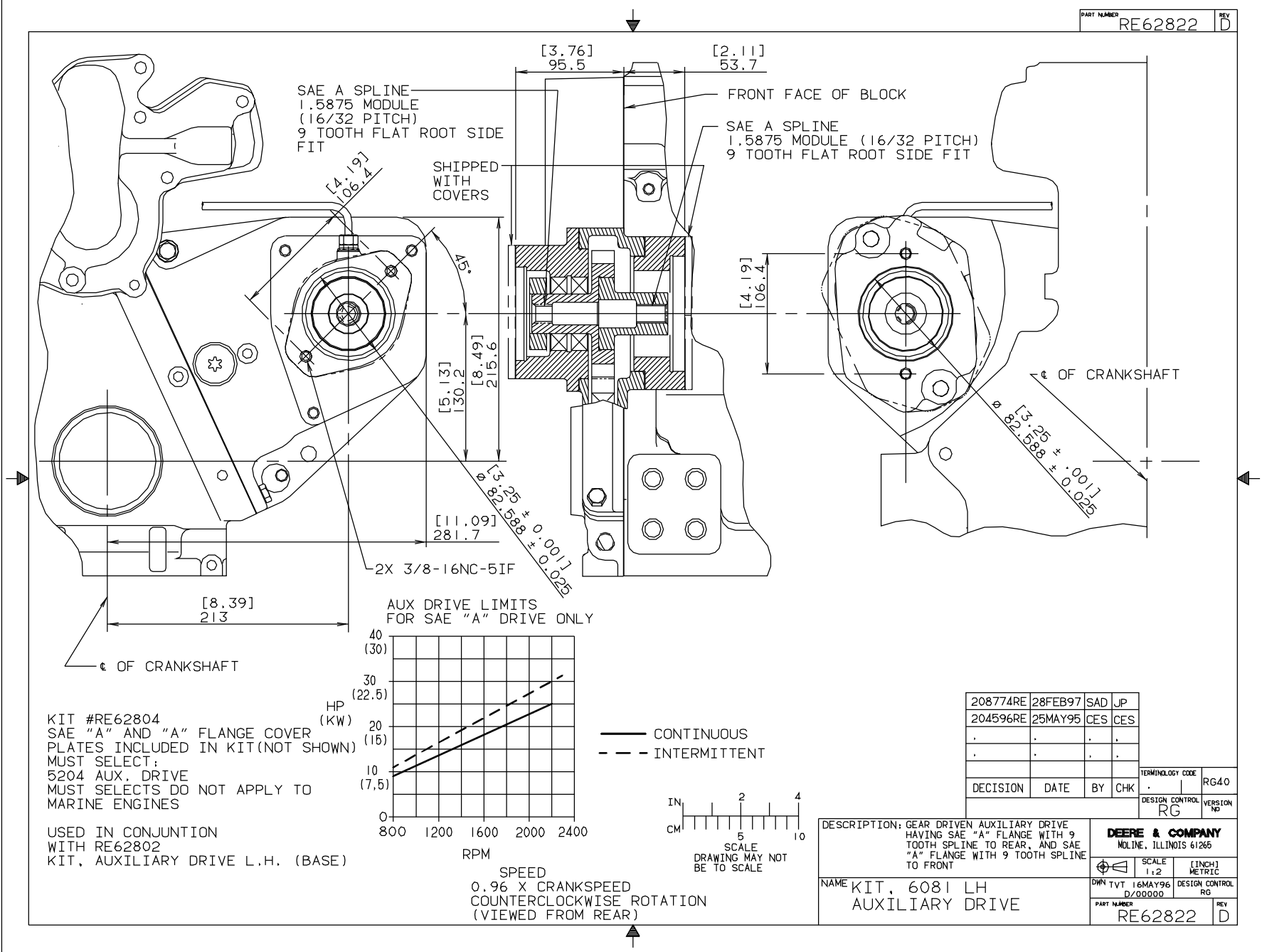
RE62799

RE60
VERSION NO

GEAR AUXILIARY DRIVE

PowerTech 8.1 L Engine

PART NUMBER RE62822 REV D



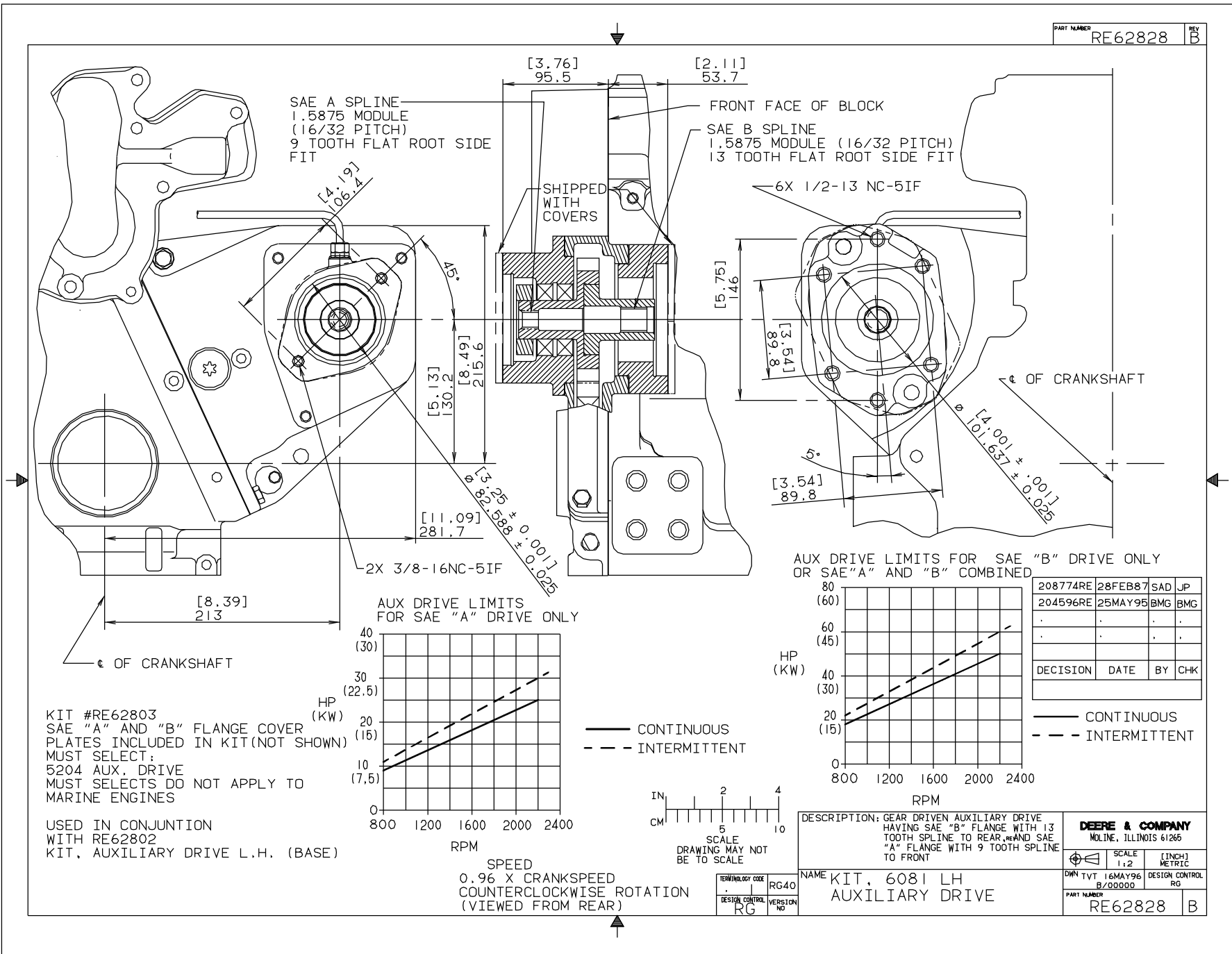
KIT #RE62804
SAE "A" AND "A" FLANGE COVER
PLATES INCLUDED IN KIT (NOT SHOWN)
MUST SELECT:
5204 AUX. DRIVE
MUST SELECTS DO NOT APPLY TO
MARINE ENGINES

USED IN CONJUNCTION
WITH RE62802
KIT, AUXILIARY DRIVE L.H. (BASE)

GEAR AUXILIARY DRIVE

PowerTech 8.1 L Engine

PART NUMBER **RE62828** REV **B**



KIT #RE62803
SAE "A" AND "B" FLANGE COVER PLATES INCLUDED IN KIT (NOT SHOWN) MUST SELECT:
5204 AUX. DRIVE
MUST SELECTS DO NOT APPLY TO MARINE ENGINES

USED IN CONJUNCTION WITH RE62802 KIT, AUXILIARY DRIVE L.H. (BASE)

SPEED
0.96 X CRANKSPEED
COUNTERCLOCKWISE ROTATION
(VIEWED FROM REAR)

IN 2 4
CM 5 10
SCALE
DRAWING MAY NOT BE TO SCALE

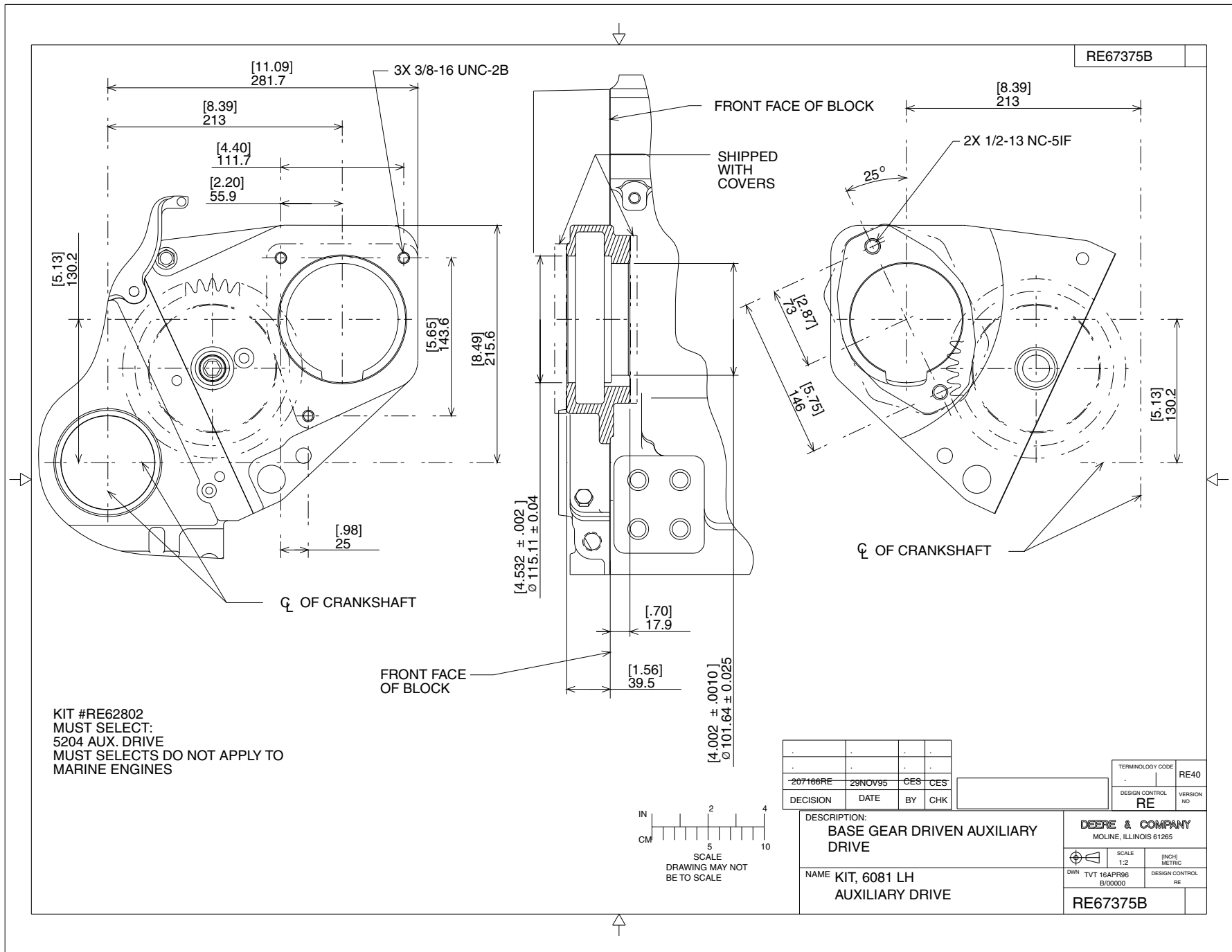
TERMINOLOGY CODE RG40
DESIGN CONTROL RG
VERSION NO

208774RE	28FEB87	SAD	JP
204596RE	25MAY95	BMG	BMG
.	.	.	.
DECISION	DATE	BY	CHK

CONTINUOUS
INTERMITTENT

GEAR AUXILIARY DRIVE

PowerTech 8.1 L Engine



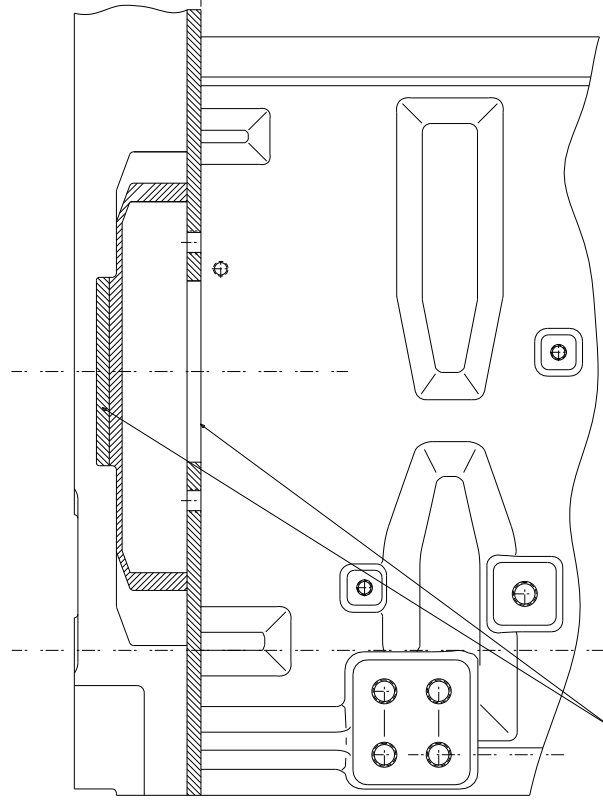
GEAR AUXILIARY DRIVE

PowerTech 12.5 L Engine

RE69481A

QUAL APPD	PROC APPD	DECISION	DATE	BY:	CHK:
.	.	A-35032	25APR97	JGS	.
.

FRONT FACE OF BLOCK



2X M16 X 2-6H THRU

$\phi 127 \pm 0.025$
(5.0) ± 0.001

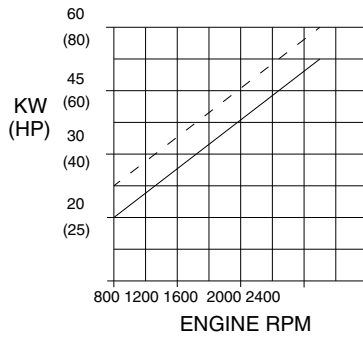
181
(7.1)

195.4
(7.7)

204.4
(8.0)

CENTER OF CRANK

ENGINE SHIPPED WITH COVER



--- INTERMITTENT
— CONTINUOUS

KIT #RE69480
MUST SELECT: 5298 AUX. DRIVE
AND 7703 TIMING GEAR COVER

NOTE: AUX DRIVE SPEED IS 1.22
X CRANKSPEED AND ROTATES
SAME DIRECTION AS CRANKSHAFT

REF:FACTORY OPTION 5201

IN 1 2
MM 25 50

SCALE
DRAWING MAY NOT
BE TO SCALE

DESCRIPTION:POWERTECH 10.5L/12.5L, IDLER GEAR AND
"C" FLANGE MOUNTING USED WITH AIR COMPRESSOR
(CONVERTS 5298 TO 5201)

DEERE & COMPANY
MOLINE, ILL 61265

NAME:
KIT, AUXILIARY
DRIVE ADAPTER

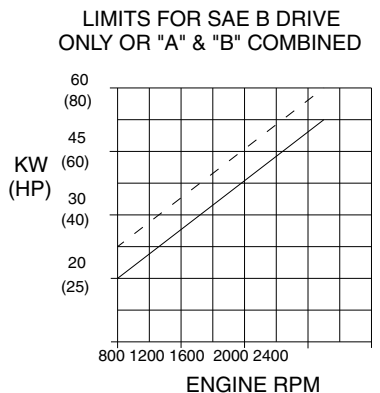
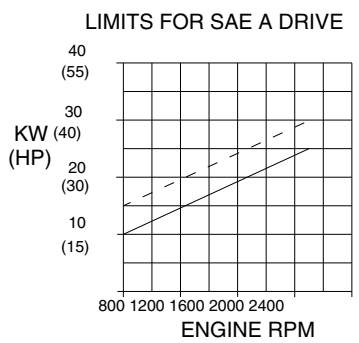
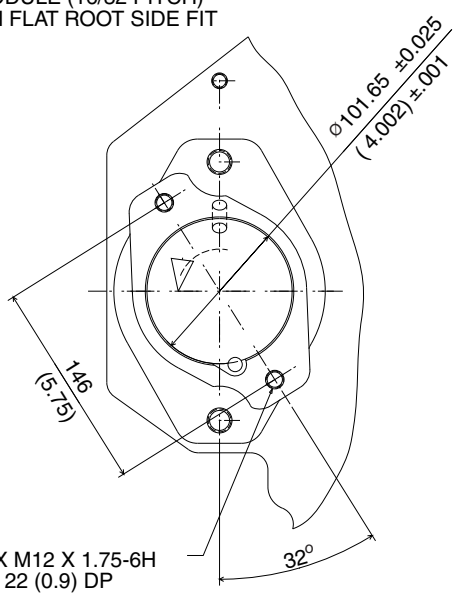
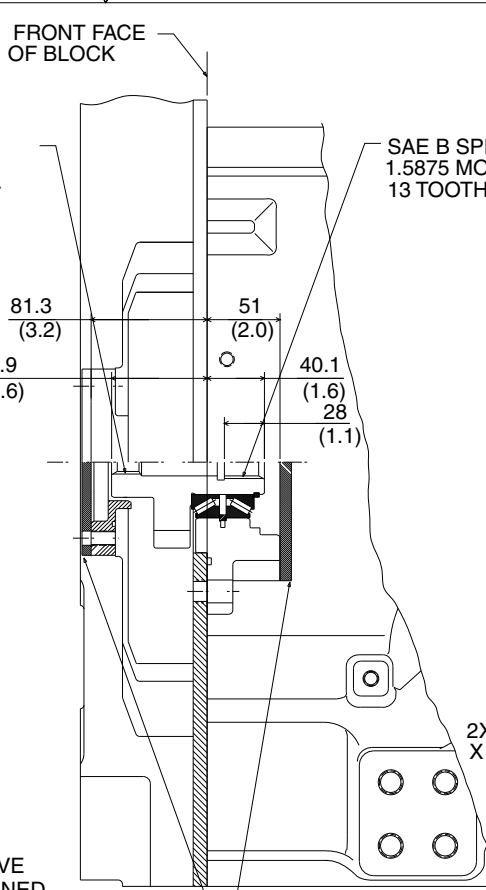
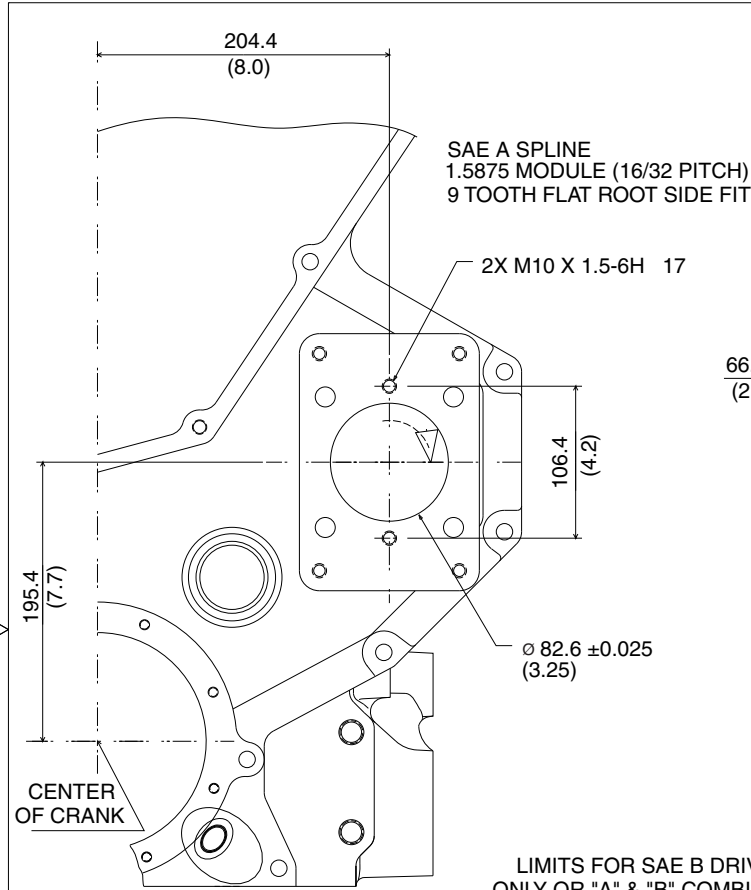
SCALE: NONE METRIC
DWN: JGS RG39713 DESIGN: GGNFRG
PART NO: RG40
RE69481A

GEAR AUXILIARY DRIVE

PowerTech 12.5 L Engine

RE69483A

QUAL APPD	PROC APPD	DECISION	DATE	BY	CHK
		A-35032	25APR97	JGS	



SHIPPED WITH COVERS

--- INTERMITTENT
— CONTINUOUS

NOTE: AUX DRIVE SPEED IS 1.22 X CRANKSPEED AND ROTATES SAME DIRECTION AS CRANKSHAFT

REF: FACTORY OPTION 5203

IN 1 2
MM 25 50

SCALE
DRAWING MAY NOT
BE TO SCALE

KIT #RE69482
MUST SELECT: 5201 AUX.
DRIVE W/ IDLER GEAR

DESCRIPTION: POWERTECH 10.5L/12.5L, AUXILIARY DRIVE ADAPTER KIT, HYDRAULIC PUMP, FRONT SAE "A" FLANGE W/9 TOOTH SPLINE / REAR SAE "B" FLANGE W/11 TOOTH SPLINE (CONVERTS 5201 TO 5203)	
NAME:	KIT, AUXILIARY DRIVE ADAPTER

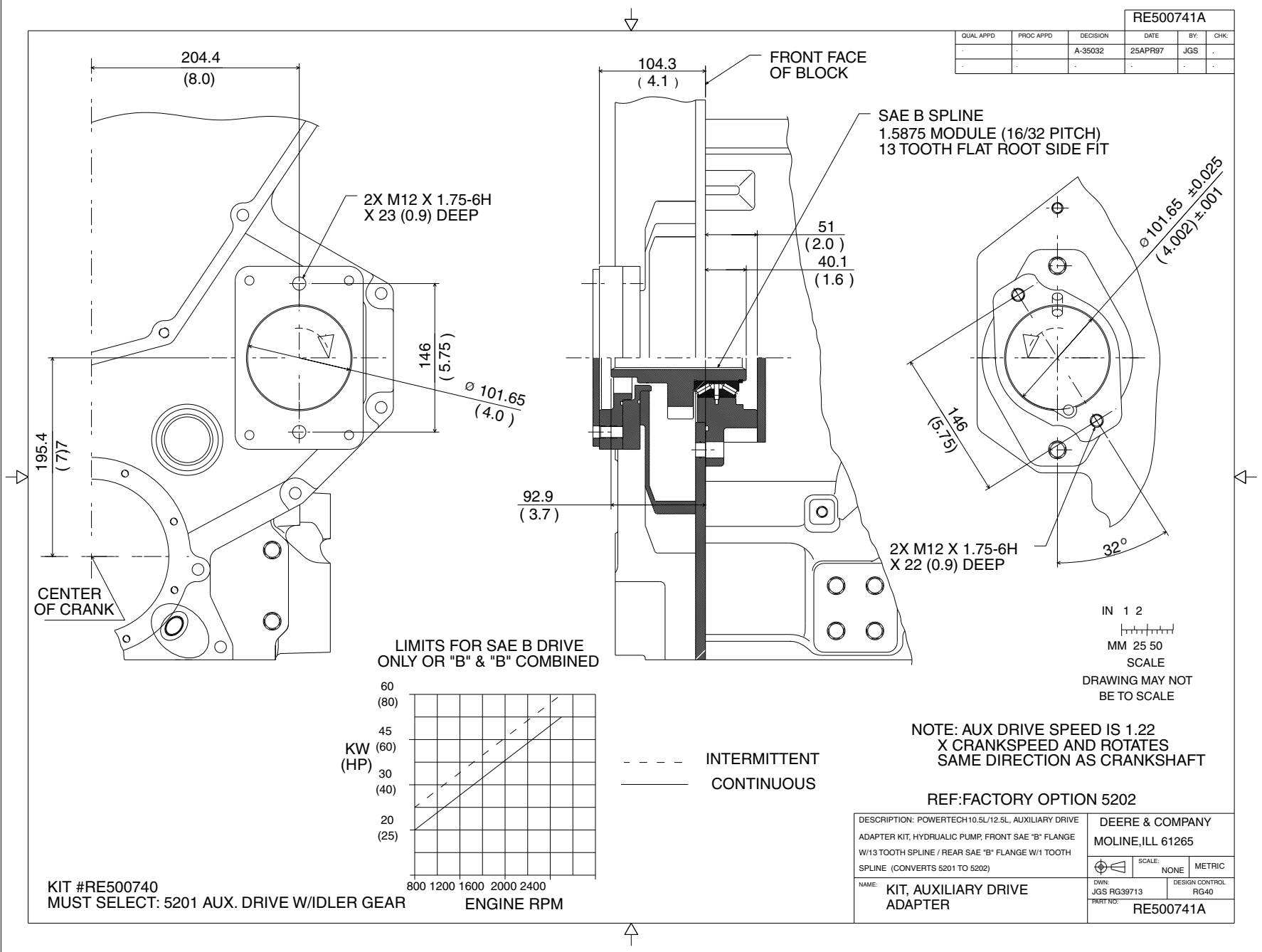
DEERE & COMPANY MOLINE, ILL 61265	
SCALE:	NONE METRIC
DWN:	JGS RG39713
DESIGN CONTROL:	RG40
PART NO: RE69483A	

GEAR AUXILIARY DRIVE

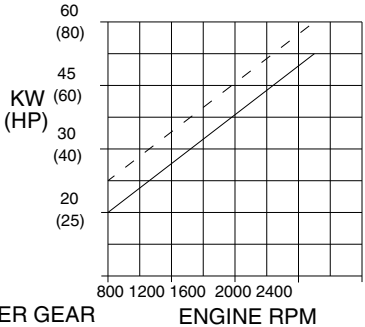
PowerTech 12.5 L Engine

RE500741A

QUAL APPD	PROC APPD	DECISION	DATE	BY	CHK
		A-35032	25APR97	JGS	



LIMITS FOR SAE B DRIVE ONLY OR "B" & "B" COMBINED



KIT #RE500740
MUST SELECT: 5201 AUX. DRIVE W/IDLER GEAR

NOTE: AUX DRIVE SPEED IS 1.22 X CRANKSPEED AND ROTATES SAME DIRECTION AS CRANKSHAFT

REF:FACTORY OPTION 5202

DESCRIPTION: POWERTECH10.5L/12.5L, AUXILIARY DRIVE ADAPTER KIT, HYDRAULIC PUMP, FRONT SAE "B" FLANGE W/13 TOOTH SPLINE / REAR SAE "B" FLANGE W/1 TOOTH SPLINE (CONVERTS 5201 TO 5202)		DEERE & COMPANY MOLINE, ILL 61265	
NAME: KIT, AUXILIARY DRIVE ADAPTER		SCALE: NONE	METRIC
PART NO: RE500741A		DWN: JGS RG39713	DESIGN CONTROL: RG40